



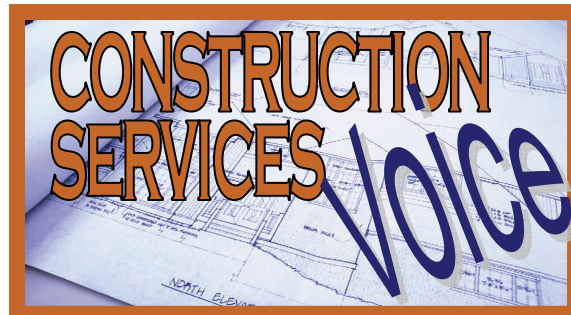
CLARK COUNTY HAS CREATED A UNIFIED APPROACH TO PHONE SERVICES RELATED TO CONSTRUCTION AND DEVELOPMENT, ACROSS DEPARTMENTAL BOUNDARIES. THE OPTIONS PRESENTED IN CONSTRUCTION VOICE ARE APPLICABLE TO PERMITS AND INSPECTIONS FOR THE DEPARTMENT OF BUILDING AND FIRE PREVENTION AND WATER RECLAMATION DISTRICT PROJECTS. USE THIS SYSTEM TO:

- SCHEDULE, CANCEL OR RESCHEDULE INSPECTIONS
- HEAR THE NAME & PHONE NUMBER OF YOUR INSPECTOR
- CHECK YOUR PLAN REVIEW STATUS

OR VISIT OUR WEBSITE AT

WWW.CLARKCOUNTYNV.GOV/BUILDING

AND CLICK ON THE PIER BUTTON FOR ADDITIONAL SERVICES



**BUILDING
TELEPHONE
INSPECTION
OPTIONS**

(702) 455-3000

Who has my ticket?

Follow the instructions below to get the name and cell phone number of your assigned inspector.

- If you have an inspection scheduled and want to get in touch with your inspector
- From the Main Menu, select option 3 to play scheduled inspection information
- Enter the Phone System Number from the top of your printed permit
- System will play the following information for each scheduled, unresulted inspection:
 - Inspection Type
 - Scheduled Date
 - Inspector Name
 - Inspector Phone number



To Schedule an Inspection...press 1

- Enter the Phone System Number from the top of your printed permit, followed by the pound sign (#)
- System will play the site address
- Enter the 4 digit inspection type code listed in this brochure, or press * for Help.
- Select Schedule date
- Optional request for morning or afternoon inspection
- Optional voice message with special instructions for your inspector
- Enter a contact phone number in case the inspector needs to reach you
- Get confirmation / transaction number
- Select option to be notified when the inspection has been resulted

To Cancel or Reschedule Inspections...press 2

To Get Inspection Results...press 4

BUILDING CODES

2222 FOUNDATION/FOOTING
2229 CONCRETE SLAB ON GRADE
2225 CONCRETE WALL
2223 STEMWALL FOUNDATION
2227 DAMP PROOF
2226 MASONRY PREGROUT
2219 UFER GROUND ELECTRODE
2236 ROOF SHEATHING
2239 SHEAR WALL
2235 SUBFLOOR SHEATHING
2244 FRAMING
2232 STRUCTURAL MASONRY
2252 INSULATION
2249 EXTERIOR LATH
2259 INTERIOR LATH/DRYWALL
2268 ROOF UNDERLAYMENT
2273 SUSPENDED CEILING FRAME
2284 STUCCO/BROWN COAT
2199 PARTIAL BUILDING FINAL
2299 BUILDING FINAL
2295 ELECTRICAL METER TAG
2228 CONCRETE FLOOR DECK
2220 REINFORCED STEEL
2234 SHOTCRETE
2233 COLUMNS & SUPPORTS
2221 PILINGS/CAISSONS
2238 FIREPROOFING
2240 STRUCTURAL STEEL
2241 STRUCTURAL WELDING
2242 HIGH STRENGTH BOLTING
2255 SHAFT ENCLOSURE
2254 SOUND TRANSMISSION
2288 FIRE DOOR TEST
2204 ROUGH GRADING
2208 FINAL GRADING
2224 GRADE BEAM FOUNDATION
2231 POST TENSION STEEL

ELECTRICAL/ALARM CODES

3311 UNDERGROUND ELEC.
3319 UFER GROUND ELEC.
3321 UNDERSLAB ELEC.
3331 ROUGH ELEC.
3931 ROUGH ALARM
3380 TEMPORARY POWER POLE
3199 PARTIAL ELEC. FINAL
3391 PRE-FINAL ELEC
3991 PRE-FINAL FIRE ALARM
3399 FINAL ELECTRICAL
3999 FIRE ALARM FINAL
3381 TEMP POWER THRU METER
3361 ELEC GENERATOR TEST
3305 SERVICE CHANGE
3395 ELECTRICAL METER TAG
3396 ELECTRICAL METER RE-TAG

FENCE/WALL CODES

2222 FOOTING
2226 MASONRY PRE-GROUT
2227 DAMP PROOF
2225 CONCRETE WALL
2299 FINAL WALL
2223 STEMWALL FOUNDATION
2232 STRUCTURAL MASONRY
2233 COLUMNS / SUPPORTS

PLUMBING CODES

4412 UNDERGROUND PLUMB
4455 SEWER
4441 ROUGH PLUMBING
4422 GAS PIPE ROUGH
4425 WATER PIPING
4430 SHOWER PAN
4484 GAS PRESSURE TST/TAG
4485 GAS TAG
4486 GAS RE-TAG
4199 PARTIAL PLUMB FINAL
4499 FINAL PLUMBING
4479 PLUMB GREASE INTCPTR
4466 SAND/OIL INTERCEPTOR
4469 SUMP PUMP/EJECTORS
4489 BOILERS, PLUMB

MECHANICAL CODES

5511 UNDERGROUND MECH
5551 ROUGH MECHANICAL
5199 PARTIAL MECH FINAL
5599 FINAL MECHANICAL
5546 ROUGH GREASE DUCT
5548 GREASE DUCT ENCLOSE
5545 DAMPERS
5535 DUCT DETECTOR TEST
5584 MECH GAS TEST/TAG
5585 MECH GAS TAG
5586 MECH GAS RE-TAG
5565 MECH CHIMNEY
5575 TYPE 1 HOOD
5577 TYPE 2 HOOD

FACILITY INSPECTIONS

3721 BUILDING FACILITY
3731 ELECTRICAL FACILITY
3751 MECHANICAL FACILITY

POOL CODES

6613 FIRST POOL INSPECTION
6611 UNDERGROUND ELEC
6612 UNDERGROUND PLUMB
6622 GAS PIPE
6631 ROUGH ELECTRICAL
6641 ROUGH PLUMBING
6645 PRE-DECK
6671 PRE-PLASTER
6683 GAS PRESSURE TEST
6684 GAS TEST AND TAG
6685 GAS TAG
6686 GAS RE-TAG
6695 FINAL ELECTRICAL
6693 FINAL PLUMBING
6699 FINAL POOL

MANUFACTURE HOME CODES

7797 INSTALLATION FINAL
7798 RE-SEAL
7795 ELECTRICAL TAG
7796 ELECTRICAL RE-TAG
7785 GAS TAG
7786 GAS RE-TAG
7705 UNDERGROUND UTILITY