

Received Date \_\_\_/\_\_\_/\_\_\_

Payment Received \_\_\_/\_\_\_/\_\_\_

SRA# \_\_\_\_\_



# Department of Public Works Traffic Management Division

500 S. Grand Central Pkwy. Las Vegas, NV 89155-400 (702)455-6000

## District 1 Type 5 Smart Pole (LV Blvd District) Site Reservation Application (SRA)

Pole ID: \_\_\_\_\_

Northing\* \_\_\_\_\_

(Use link: <http://arcg.is/0afejb0>)

Easting\* \_\_\_\_\_

Site ID: \_\_\_\_\_

Applicant \_\_\_\_\_

Pole Priority Level: \_\_\_\_\_

Signature \_\_\_\_\_

**\*Must Provide Site Coordinates in Northing/Easting, NAD 1983, State Plane Nevada East, US Survey Feet. Attach maps or additional information as necessary.**

### Licensee / Conduit Color (see Detail A Below)

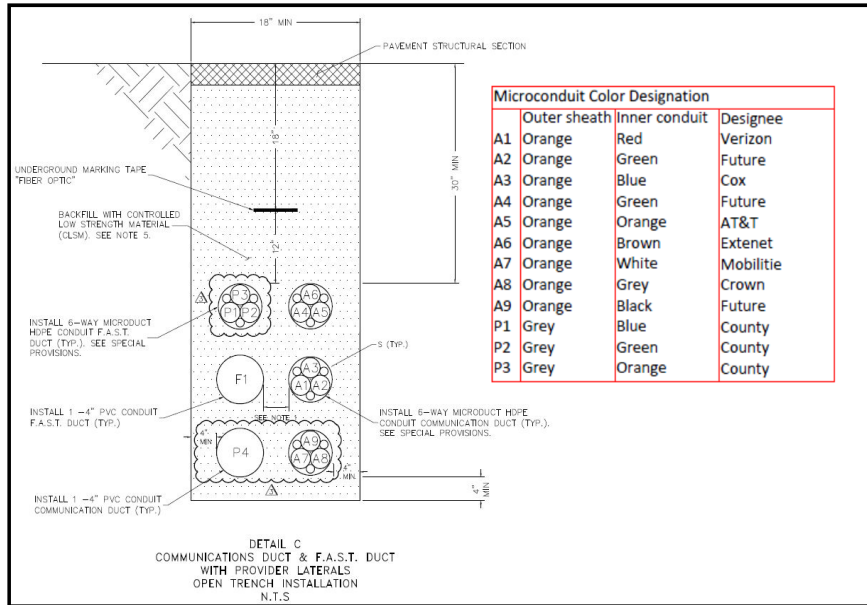
- Cox / Orange - Inner Duct Blue
- Crown Castle / Orange - Inner Duct Grey
- ExteNet / Orange - Inner Duct Brown
- Mobilitie / Orange - Inner Duct White
- New Cingular / Orange - Inner Duct Orange
- Verizon / Orange - Inner Duct Red
- Other \_\_\_\_\_

### Type 5 Bay (see Detail B below)

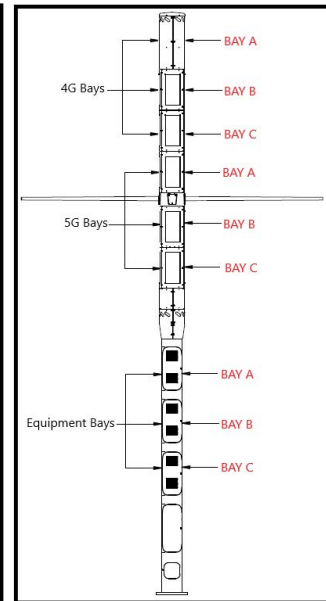
Number Bays Based On Priority

- A
- B
- C

Detail A



Detail B



### Licensee Notes

NOTES: \_\_\_\_\_

\_\_\_\_\_

\_\_\_\_\_

\_\_\_\_\_

Do Not Write Below This line (County Use Only)

Location Denied Reason: \_\_\_\_\_

Bay Denied Reason: \_\_\_\_\_

Suggested Alternative Location: \_\_\_\_\_

Alternative Bay Assigned: \_\_\_\_\_

Location Approval: \_\_\_\_\_

By \_\_\_\_\_ Date \_\_\_\_\_