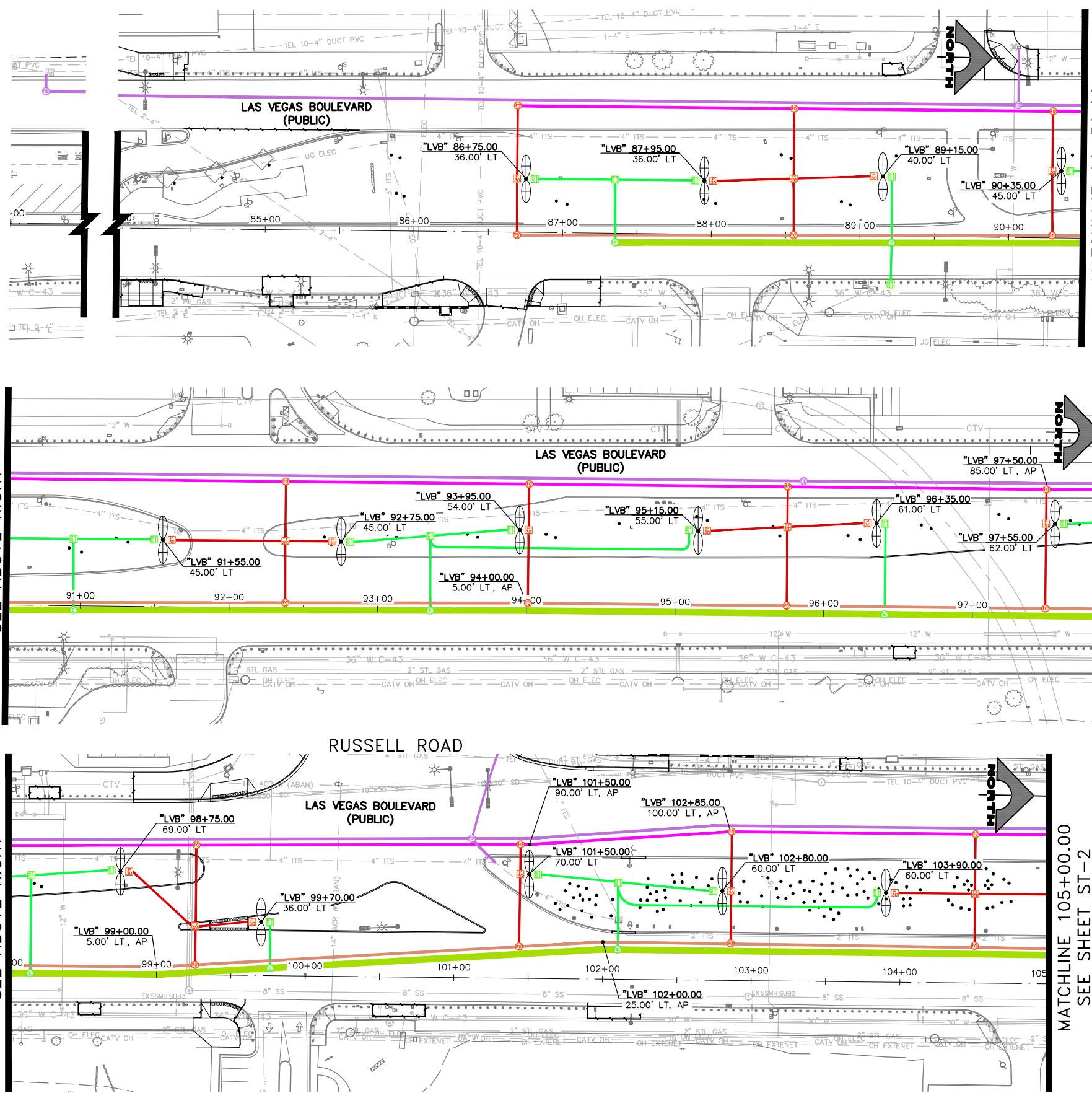


06-02-21 19:09:59 J:\Projects\500-897-LV\DWG\Exhibits\Communication Display Welcome Sign to Spring Mt\CommDisplayWelcomeSignToSpringMt.dwg



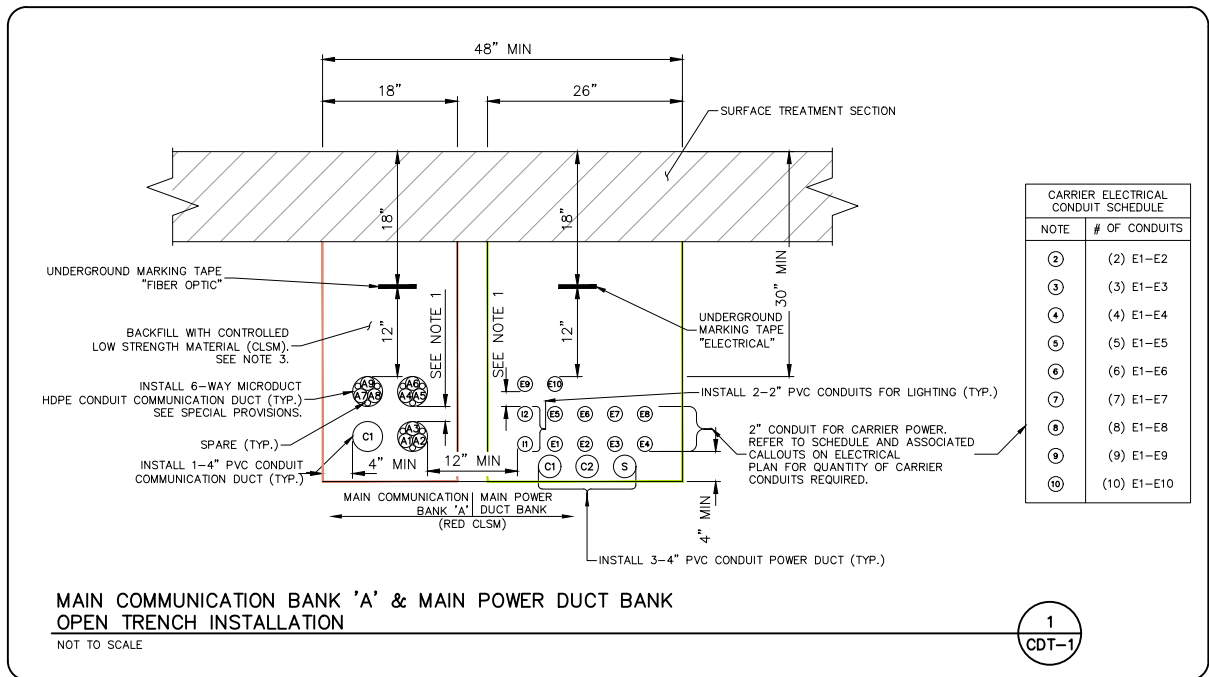
MATCHLINE 90+50.00  
SEE BELOW LEFT

MATCHLINE 98+00.00  
SEE BELOW LEFT

MATCHLINE 90+50.00  
SEE ABOVE RIGHT

MATCHLINE 98+00.00  
SEE ABOVE RIGHT

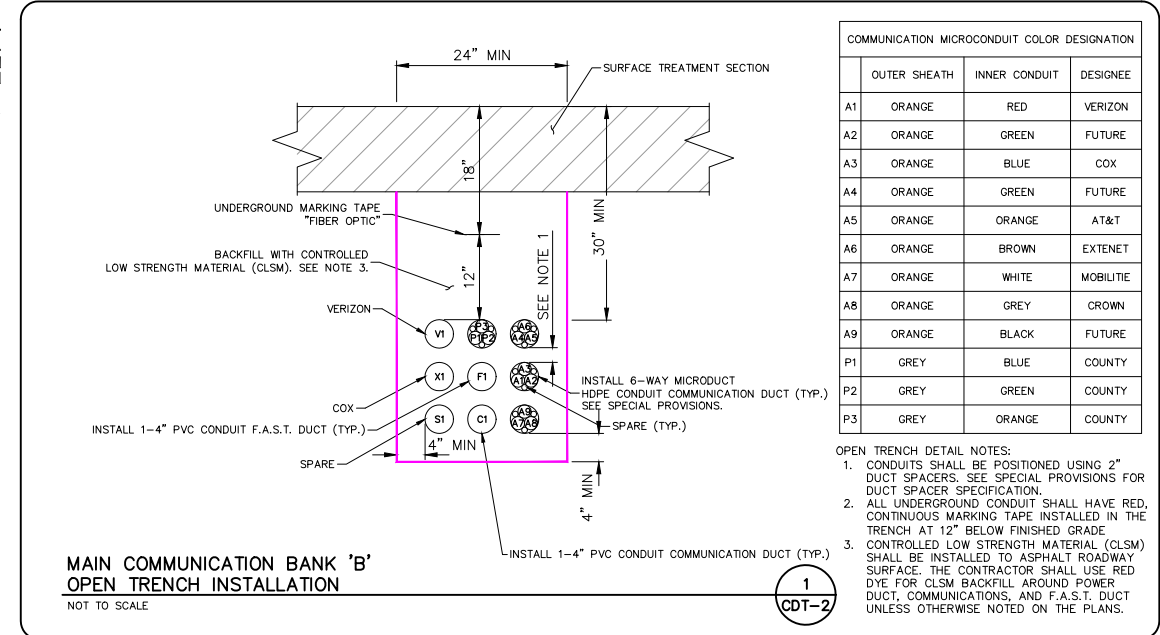
MATCHLINE 105+00.00  
SEE SHEET ST-2



**MAIN COMMUNICATION BANK 'A' & MAIN POWER DUCT BANK  
OPEN TRENCH INSTALLATION**  
NOT TO SCALE

CARRIER ELECTRICAL CONDUIT SCHEDULE	
NOTE	# OF CONDUITS
②	(2) E1-E2
③	(3) E1-E3
④	(4) E1-E4
⑤	(5) E1-E5
⑥	(6) E1-E6
⑦	(7) E1-E7
⑧	(8) E1-E8
⑨	(9) E1-E9
⑩	(10) E1-E10

1  
CDT-1



**MAIN COMMUNICATION BANK 'B'  
OPEN TRENCH INSTALLATION**  
NOT TO SCALE

COMMUNICATION MICROCONDUIT COLOR DESIGNATION			
OUTER SHEATH	INNER CONDUIT	DESIGNEE	
A1	ORANGE	RED	VERIZON
A2	ORANGE	GREEN	FUTURE
A3	ORANGE	BLUE	COX
A4	ORANGE	GREEN	FUTURE
A5	ORANGE	ORANGE	AT&T
A6	ORANGE	BROWN	EXTENET
A7	ORANGE	WHITE	MOBILITE
A8	ORANGE	GREY	CROWN
A9	ORANGE	BLACK	FUTURE
P1	GREY	BLUE	COUNTY
P2	GREY	GREEN	COUNTY
P3	GREY	ORANGE	COUNTY

- OPEN TRENCH DETAIL NOTES:
- CONDUITS SHALL BE POSITIONED USING 2" DUCT SPACERS. SEE SPECIAL PROVISIONS FOR DUCT SPACER SPECIFICATION.
  - ALL UNDERGROUND CONDUIT SHALL HAVE RED CONTINUOUS MARKING TAPE INSTALLED IN THE TRENCH AT 12" BELOW FINISHED GRADE.
  - CONTROLLED LOW STRENGTH MATERIAL (CLSM) SHALL BE INSTALLED TO ASPHALT ROADWAY SURFACE. THE CONTRACTOR SHALL USE RED DYE FOR CLSM BACKFILL AROUND POWER DUCT, COMMUNICATIONS, AND F.A.S.T. DUCT UNLESS OTHERWISE NOTED ON THE PLANS.

1  
CDT-2

**LEGEND**

- COMMUNICATION DUCT BANK 'A'
- COMMUNICATIONS/POWER DUCT BANK
- FAST DUCT BANK
- COMMUNICATION DUCT BANK 'B'
- POWER LATERAL
- COMMUNICATIONS LATERAL



**LAS VEGAS BOULEVARD**  
**COMMUNICATION/POWER ALIGNMENT**  
**"LVB" 81+00 TO "LVB" 105+00**  
 CLARK COUNTY, NEVADA, DEPARTMENT OF PUBLIC WORKS

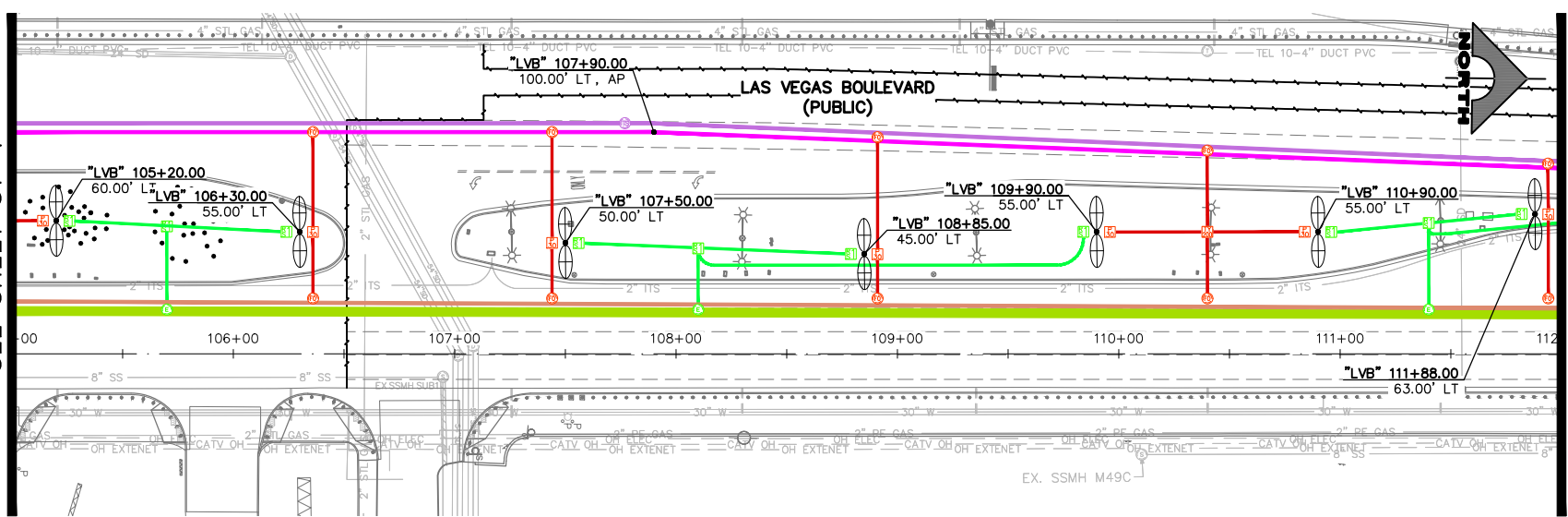
PROJECT No: 500-897-LV DRAWN BY: JAY  
 DESIGNED BY: JAY CHECKED BY: TAM  
 APPROVED BY: \_\_\_\_\_  
**GCV** ENGINEERS & SURVEYORS  
 1555 S. RAINBOW BLVD.  
 LAS VEGAS, NV 89146  
 T: 702.804.2000  
 F: 702.804.2299  
 gcvengineering.com

SCALE	DRAWING NO.
HORIZ: 1" = 40'	<b>ST-1</b>
VERT: NONE	
FIELD BOOK	SHT. 1 OF 8
	L-XXXX

REV. NO.	DATE	DESCRIPTION	APPROVED

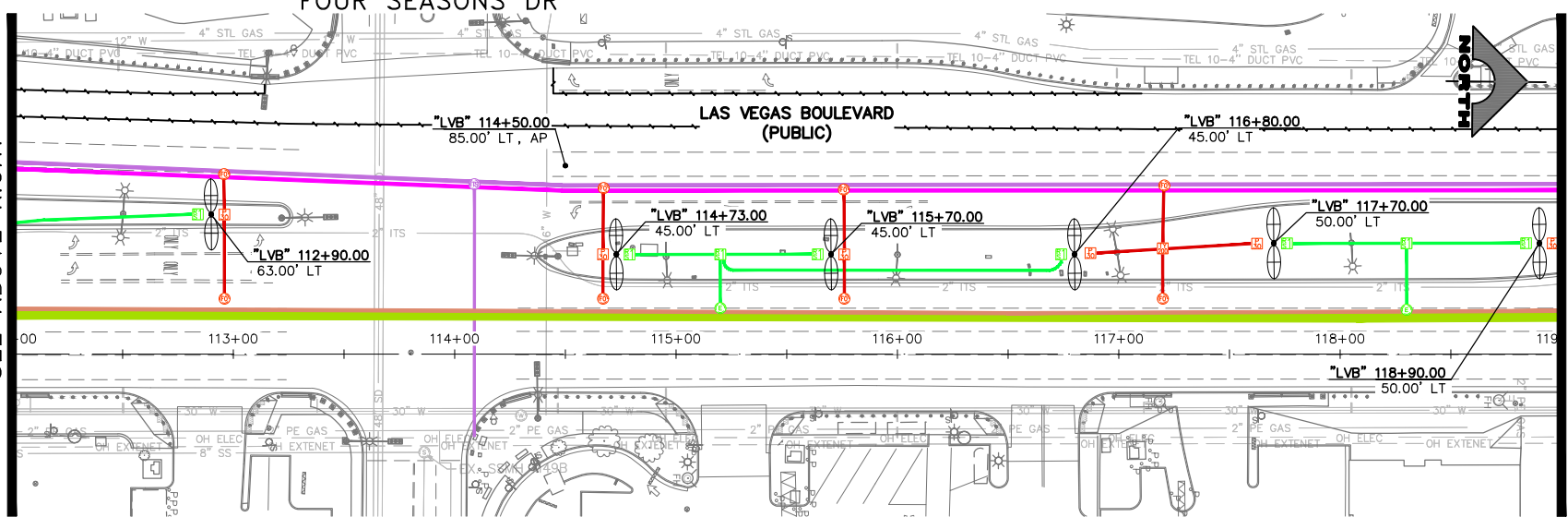
F:\Projects\500\500-897-LV\DWG\Exhibits\Communication Display Welcome Sign to Spring Mt\CommDisplayWelcomeSignToSpringMt.dwg

MATCHLINE 105+00.00  
SEE SHEET ST-1



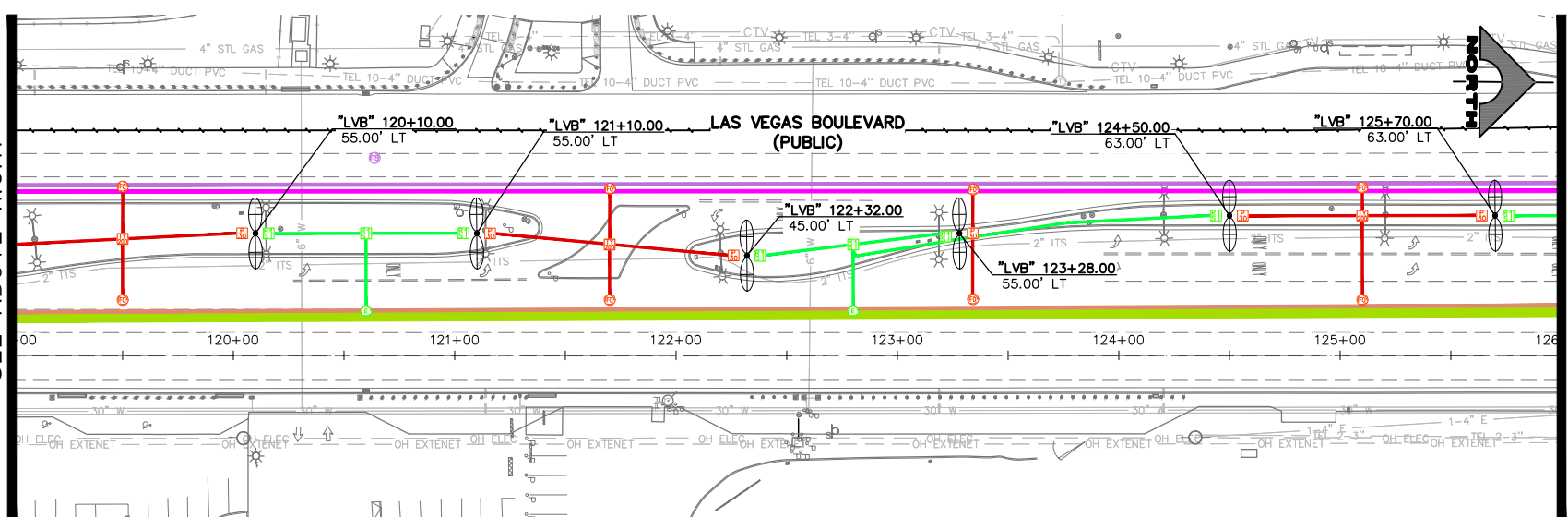
MATCHLINE 112+00.00  
SEE BELOW LEFT

MATCHLINE 112+00.00  
SEE ABOVE RIGHT

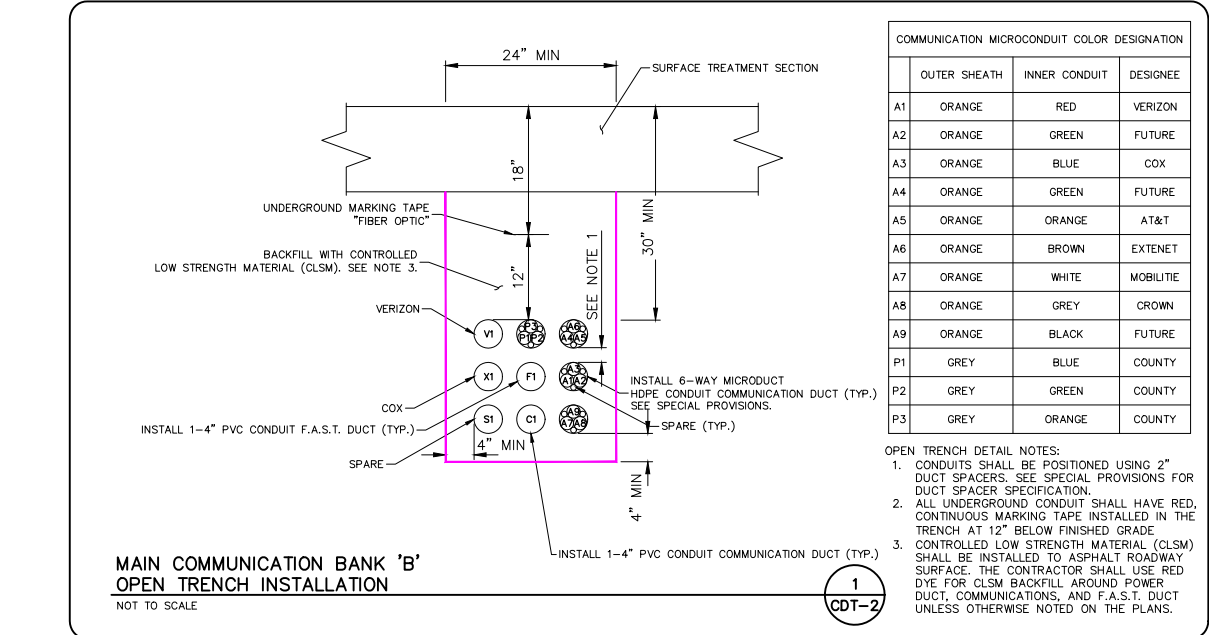
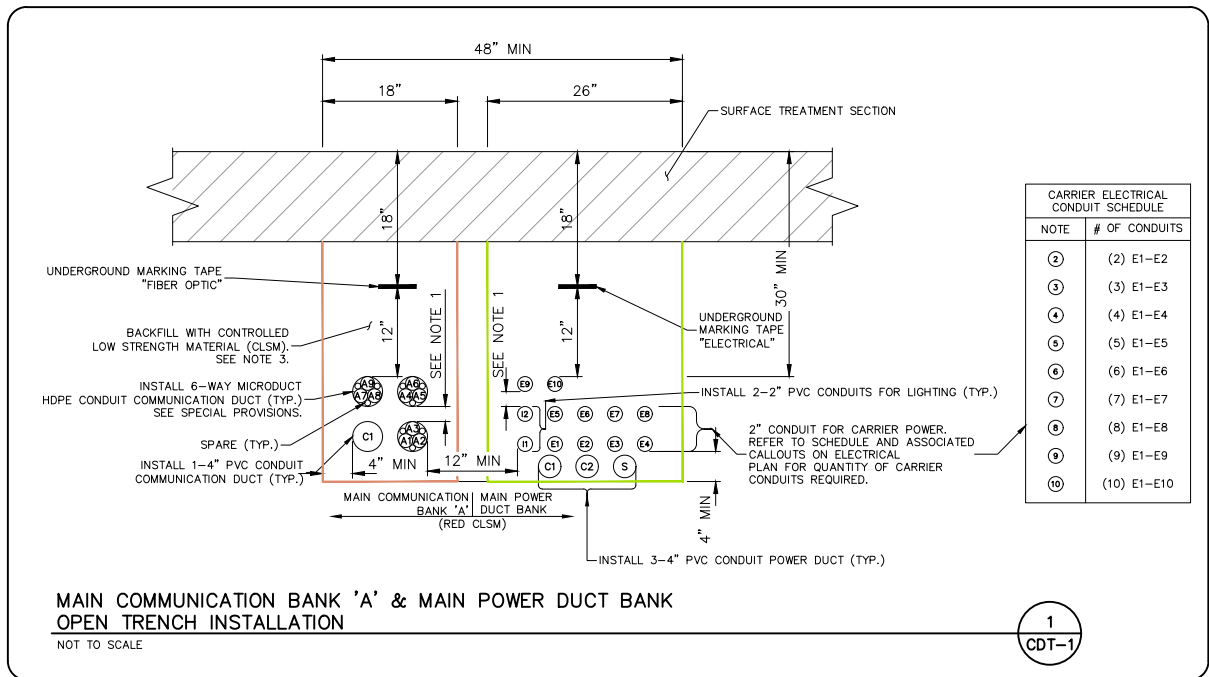


MATCHLINE 119+00.00  
SEE BELOW LEFT

MATCHLINE 119+00.00  
SEE ABOVE RIGHT



MATCHLINE 126+00.00  
SEE SHEET ST-3



REV. NO.	DATE	DESCRIPTION	APPROVED



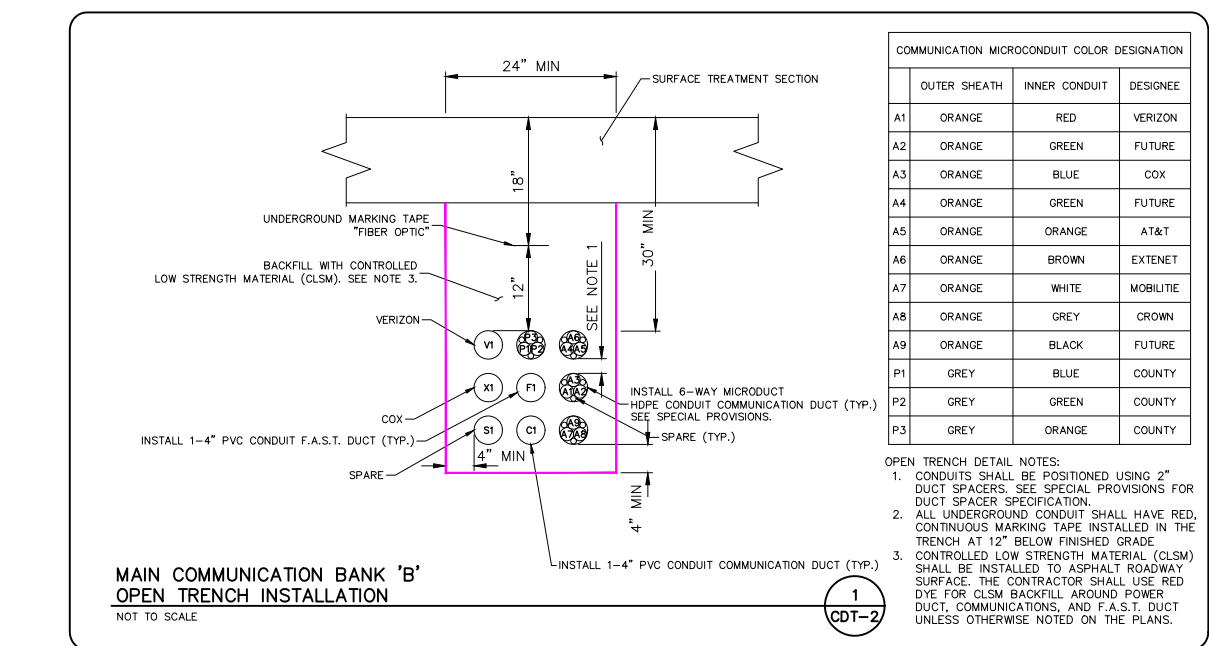
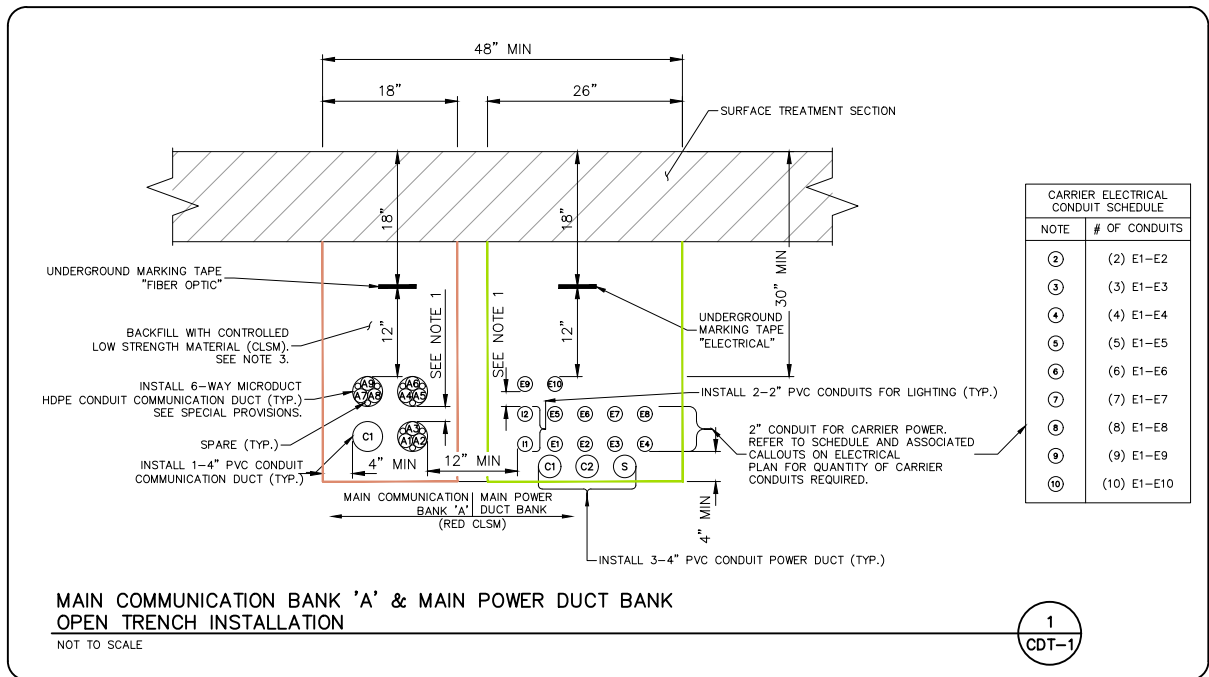
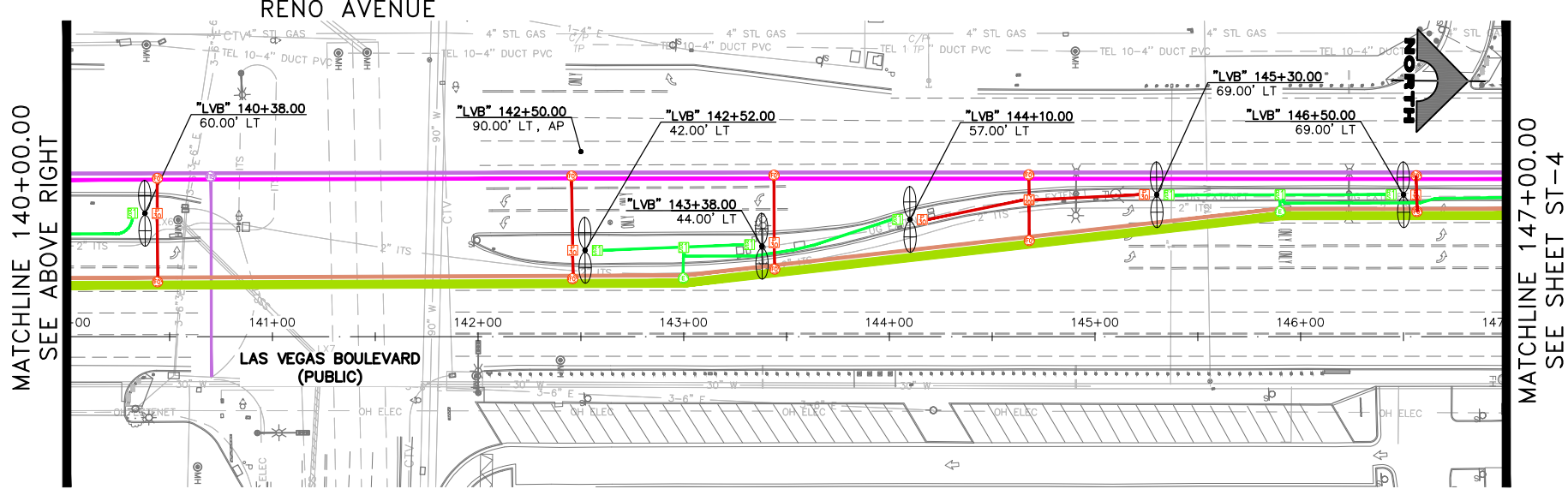
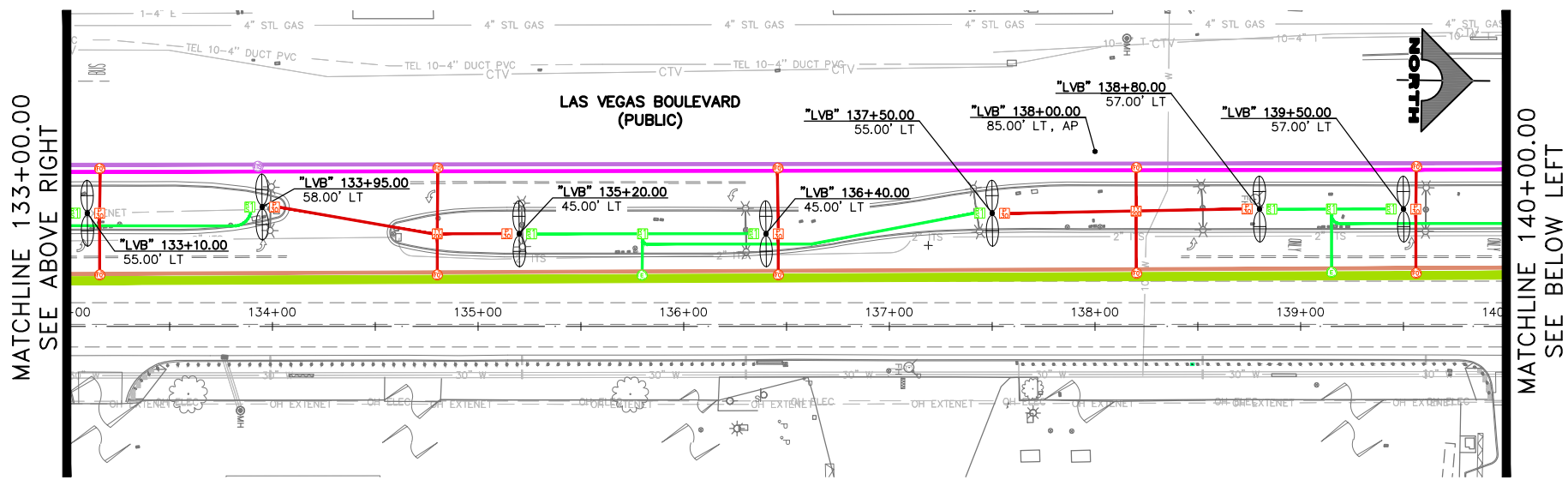
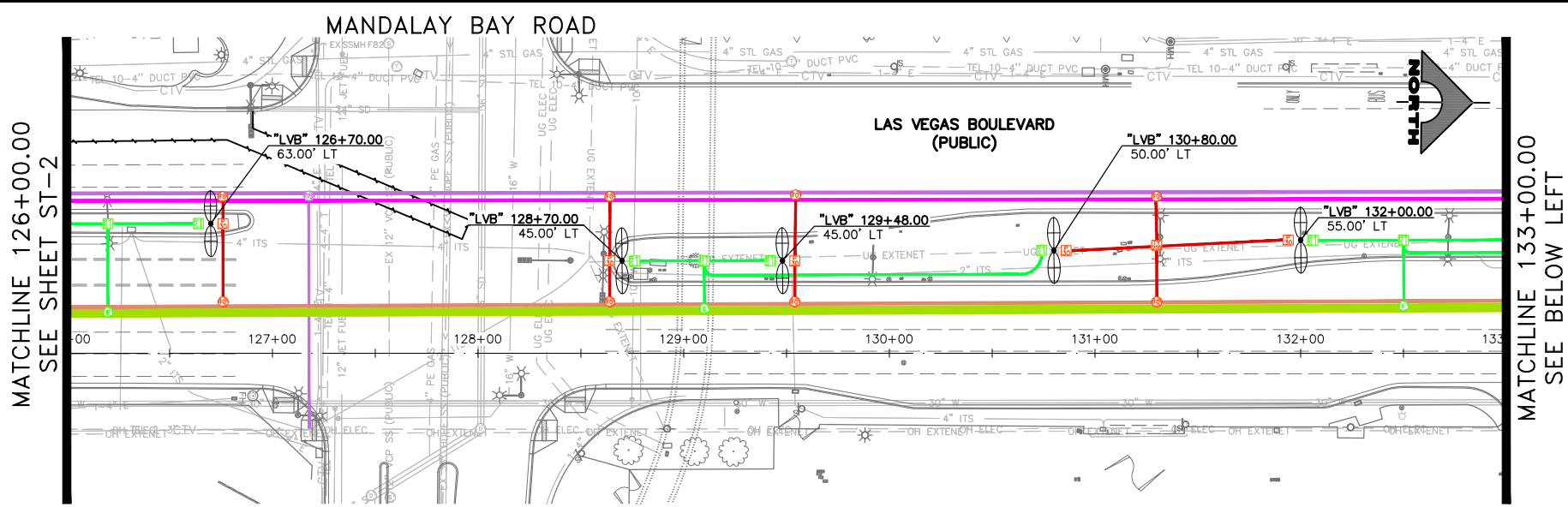
**LAS VEGAS BOULEVARD**  
 COMMUNICATION/POWER ALIGNMENT  
 "LVB" 105+00 TO "LVB" 126+00  
 CLARK COUNTY, NEVADA, DEPARTMENT OF PUBLIC WORKS

PROJECT No: 500-897-LV DRAWN BY: JAY  
 DESIGNED BY: JAY CHECKED BY: TAM  
 APPROVED BY: \_\_\_\_\_

**GCV** ENGINEERS & SURVEYORS  
 1555 S. RAINBOW BLVD.  
 LAS VEGAS, NV 89146  
 T: 702.804.2000  
 F: 702.804.2299  
 gcvengineering.com

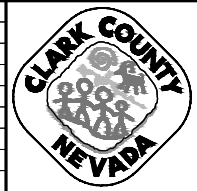
SCALE	DRAWING NO.
HORIZ: 1" = 40'	ST-2
VERT: NONE	SHT. 2 OF 8
FIELD BOOK	L-XXXX

06-02-21 19:11:05 J:\Projects\500-897-LV\DWG\Exhibits\Communication Display Welcome Sign to Spring Mt\CommDisplayWelcomeSignToSpringMt.dwg



- LEGEND**
- COMMUNICATION DUCT BANK 'A'
  - COMMUNICATIONS/POWER DUCT BANK
  - FAST DUCT BANK
  - COMMUNICATION DUCT BANK 'B'
  - POWER LATERAL
  - COMMUNICATIONS LATERAL

REV. NO.	DATE	DESCRIPTION	APPROVED



**LAS VEGAS BOULEVARD**  
 COMMUNICATION/POWER ALIGNMENT  
 "LVB" 126+00 TO "LVB" 147+00  
 CLARK COUNTY, NEVADA, DEPARTMENT OF PUBLIC WORKS

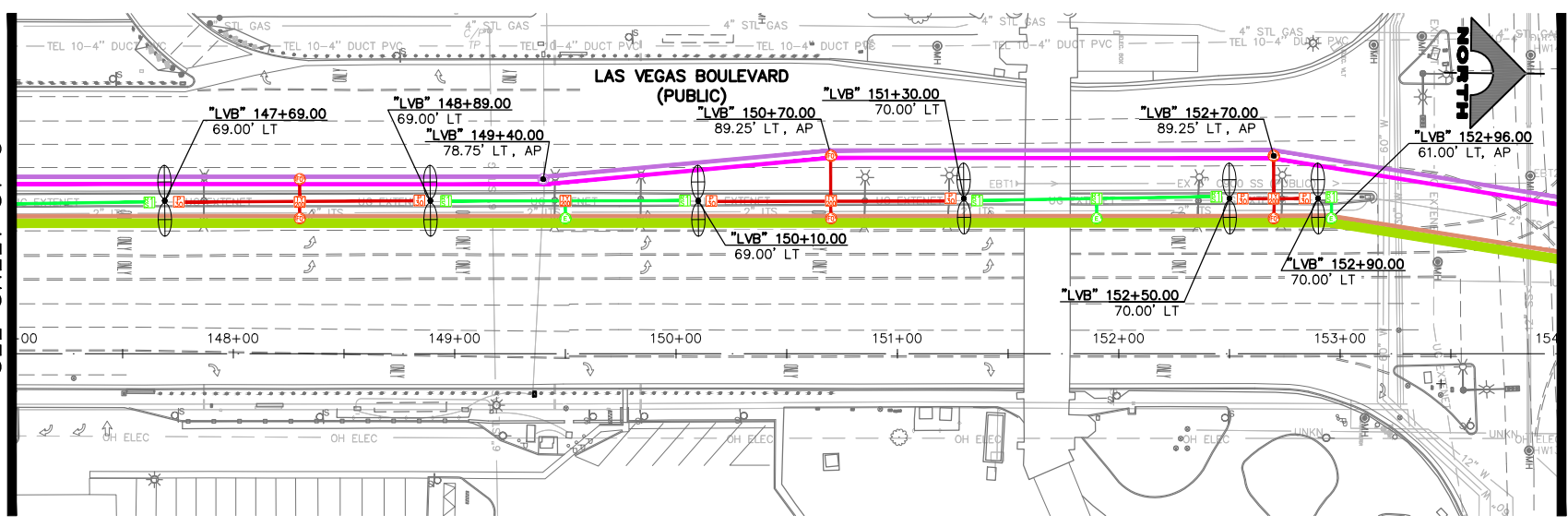
PROJECT No: 500-897-LV DRAWN BY: JAY  
 DESIGNED BY: JAY CHECKED BY: TAM  
 APPROVED BY: \_\_\_\_\_

SCALE: HORIZ: 1" = 40'  
 VERT: NONE  
 FIELD BOOK: \_\_\_\_\_  
 DRAWING NO. **ST-3**  
 SHT. 3 OF 8  
 L-XXXX



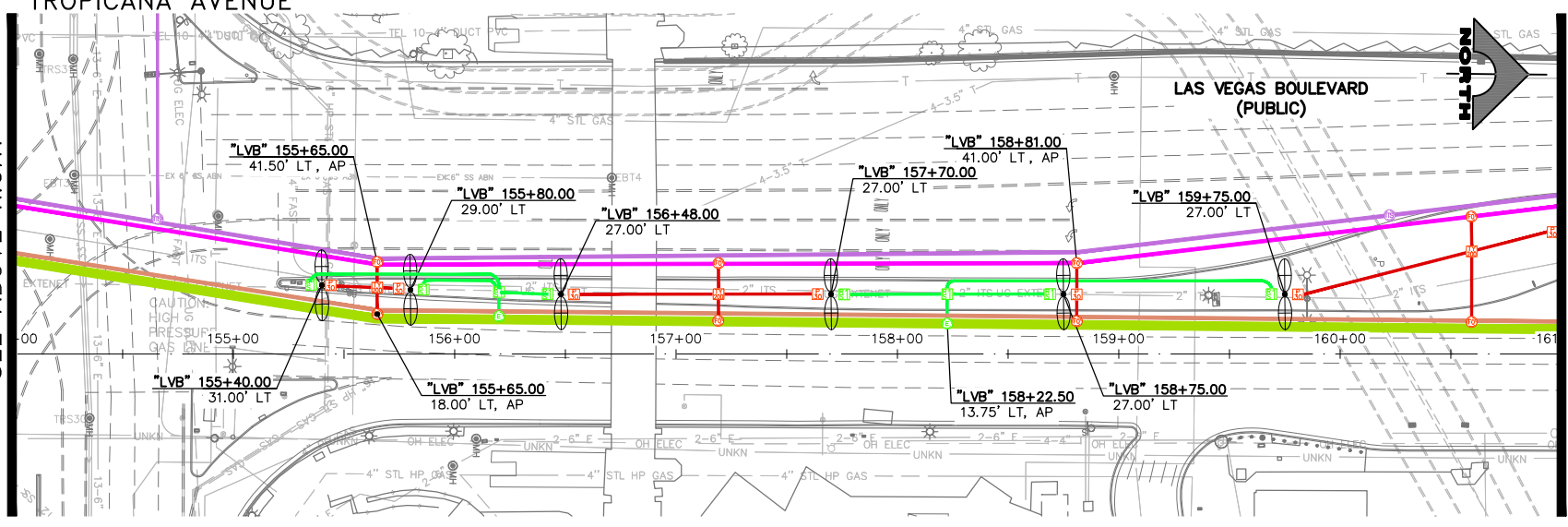
1555 S. RAINBOW BLVD.  
 LAS VEGAS, NV 89146  
 T: 702.804.2000  
 F: 702.804.2299  
 gcvengineering.com

MATCHLINE 147+00.00  
SEE SHEET ST-3



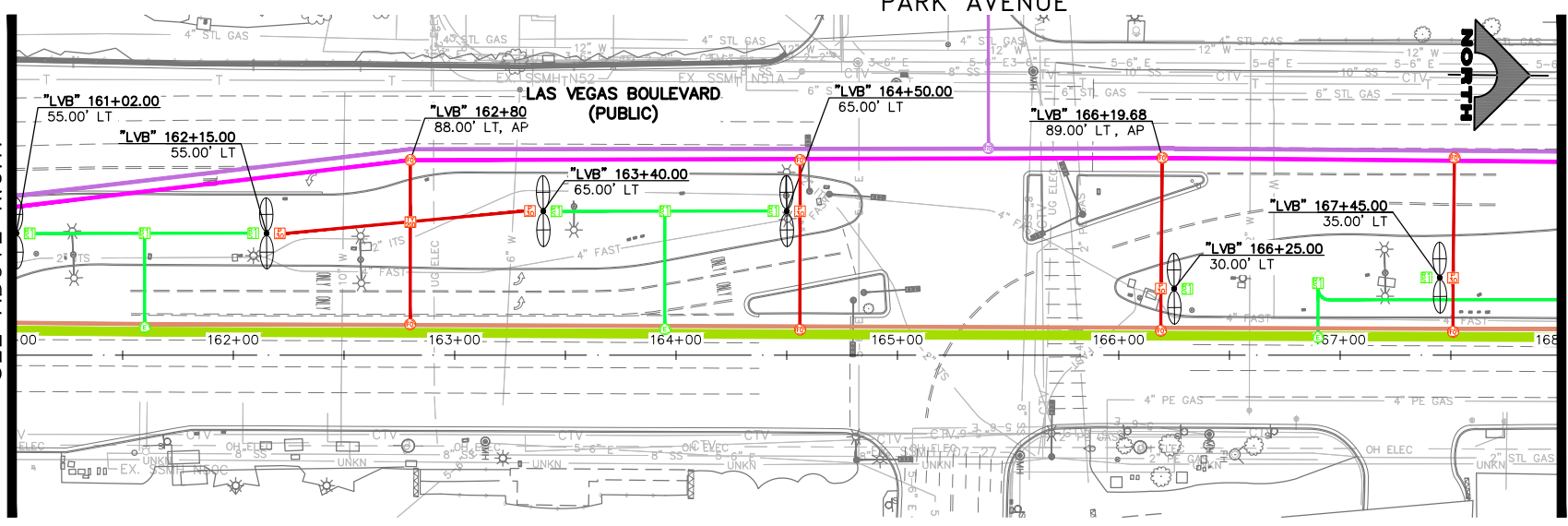
MATCHLINE 154+00.00  
SEE BELOW LEFT

MATCHLINE 154+00.00  
SEE ABOVE RIGHT

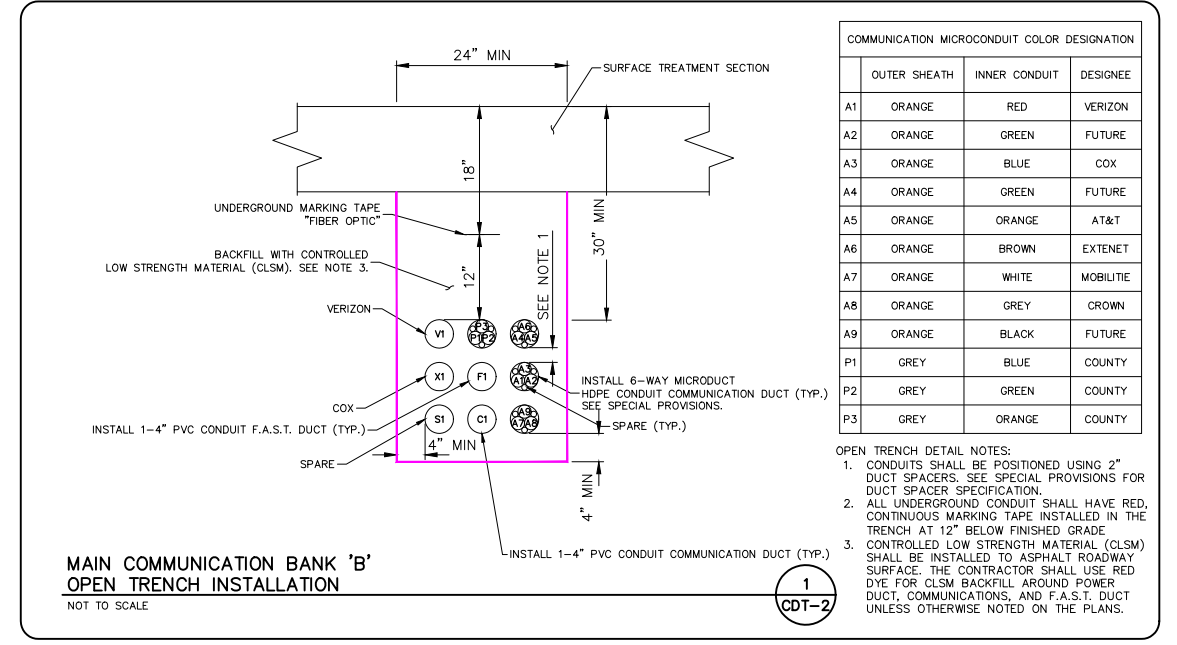
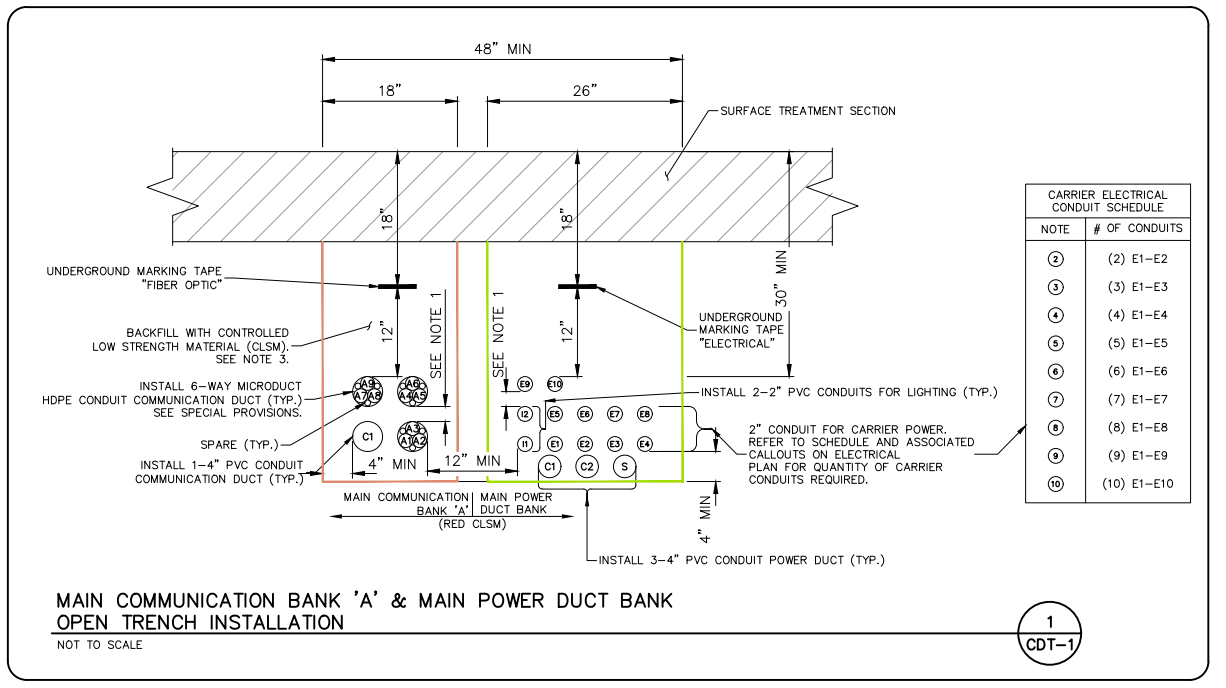


MATCHLINE 161+00.00  
SEE BELOW LEFT

MATCHLINE 161+00.00  
SEE ABOVE RIGHT

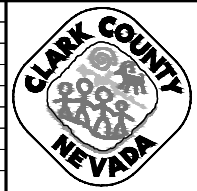


MATCHLINE 168+00.00  
SEE SHEET ST-5



06-02-21 19:11:40 F:\Projects\500-897-LV\DWG\Exhibits\Communication Display Welcome Sign to Spring Mt\CommDisplayWelcomeSignToSpringMt.dwg  
 J:\otson

REV. NO.	DATE	DESCRIPTION	APPROVED



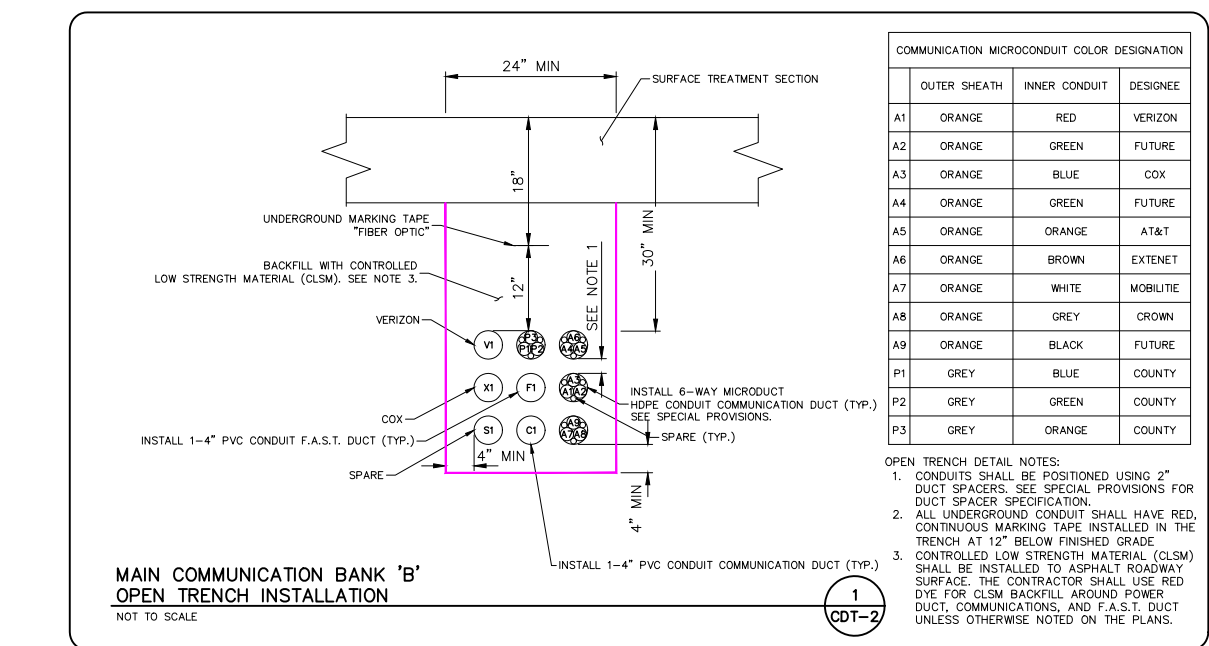
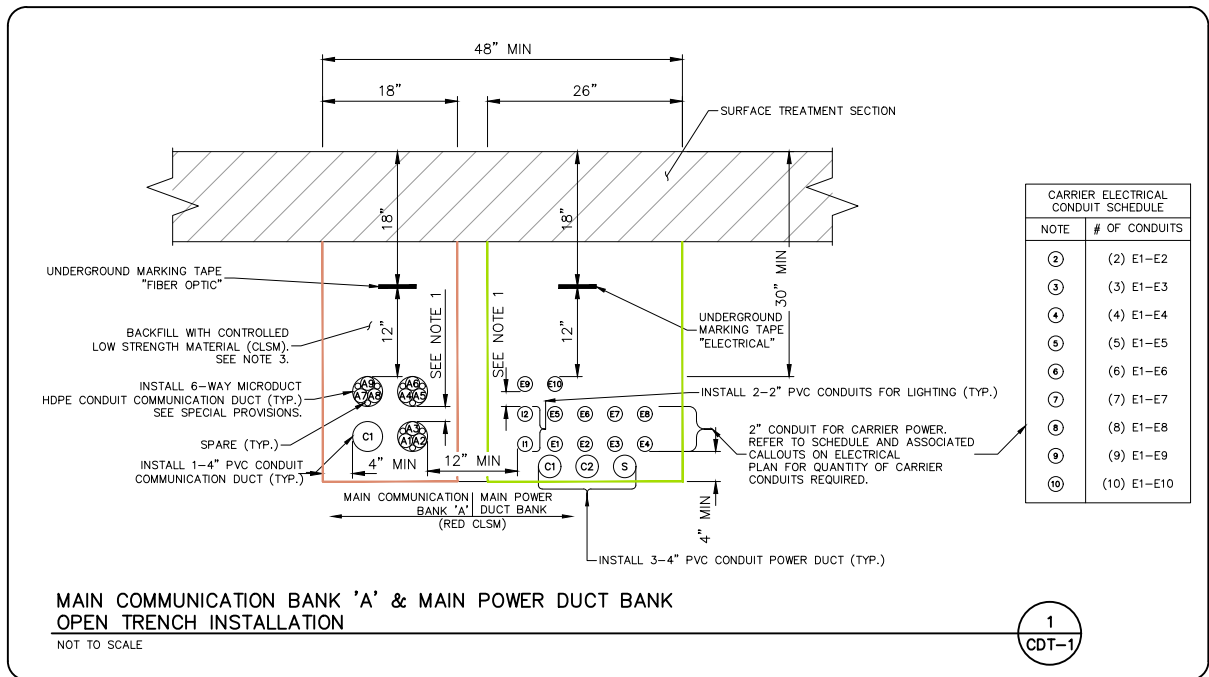
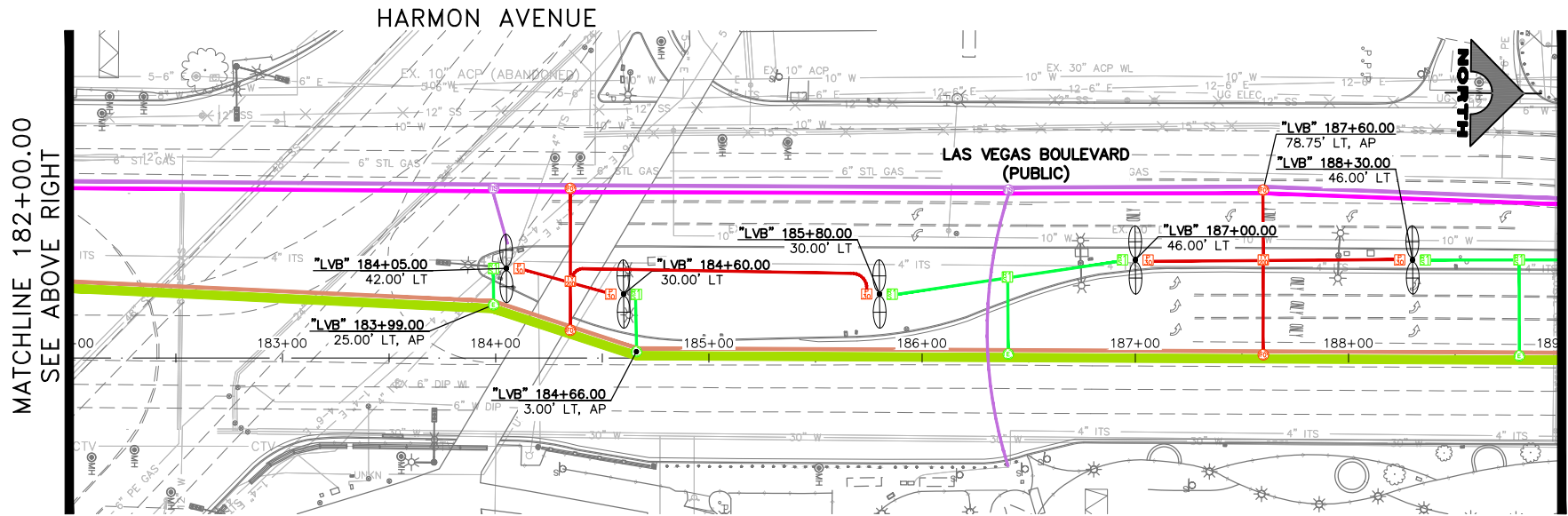
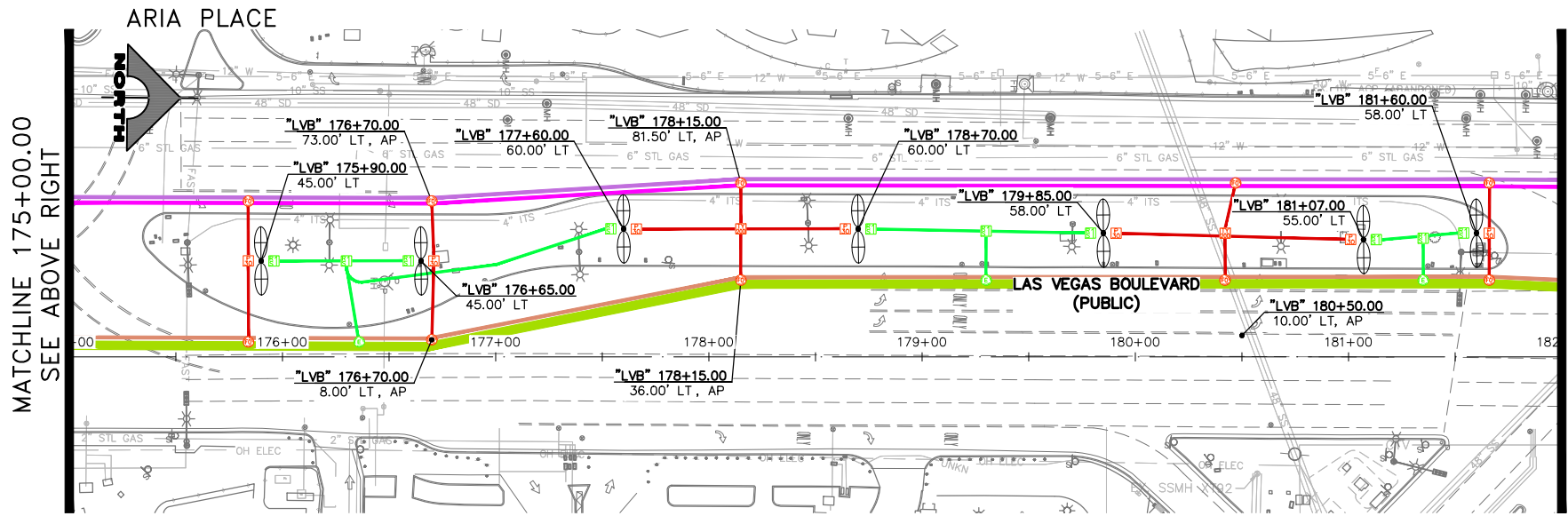
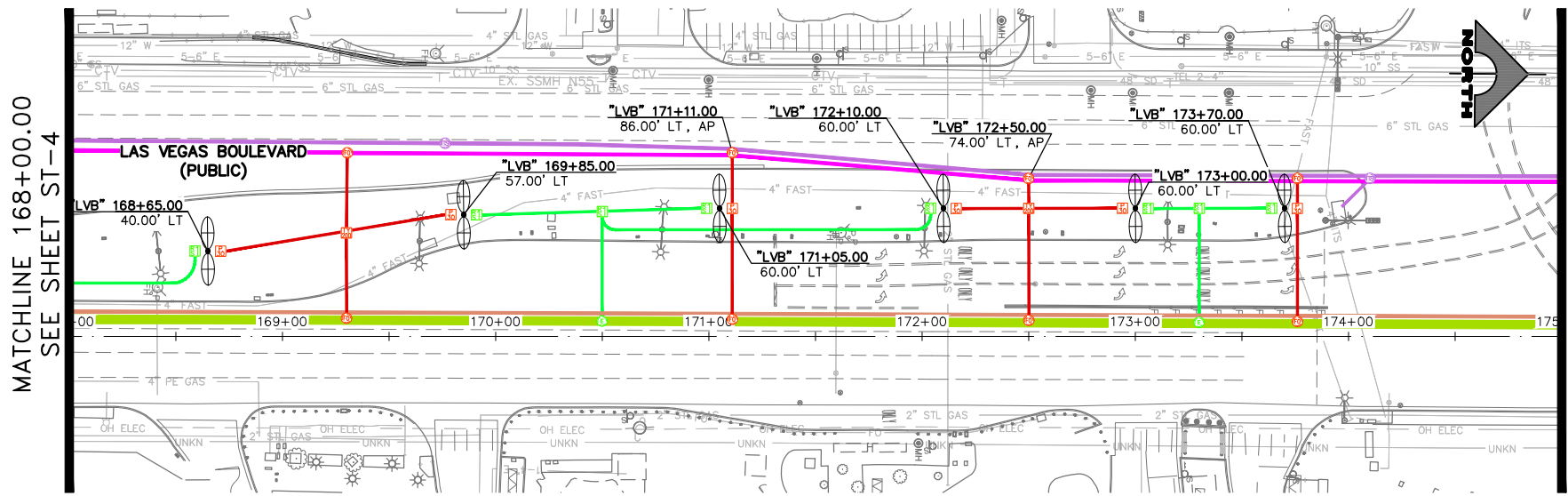
**LAS VEGAS BOULEVARD**  
**COMMUNICATION/POWER ALIGNMENT**  
 "LVB" 147+00 TO "LVB" 168+00  
 CLARK COUNTY, NEVADA, DEPARTMENT OF PUBLIC WORKS

PROJECT No: 500-897-LV DRAWN BY: JAY  
 DESIGNED BY: JAY CHECKED BY: TAM  
 APPROVED BY: \_\_\_\_\_

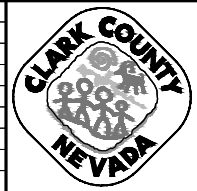


SCALE	DRAWING NO.
HORIZ: 1" = 40'	ST-4
VERT: NONE	SHT. 4 OF 8
FIELD BOOK	L-XXXX

06-02-21 19:12:16 J:\Projects\500-897-LV\DWG\Exhibits\Communication Display Welcome Sign to Spring Mt\CommDisplayWelcomeSignToSpringMt.dwg



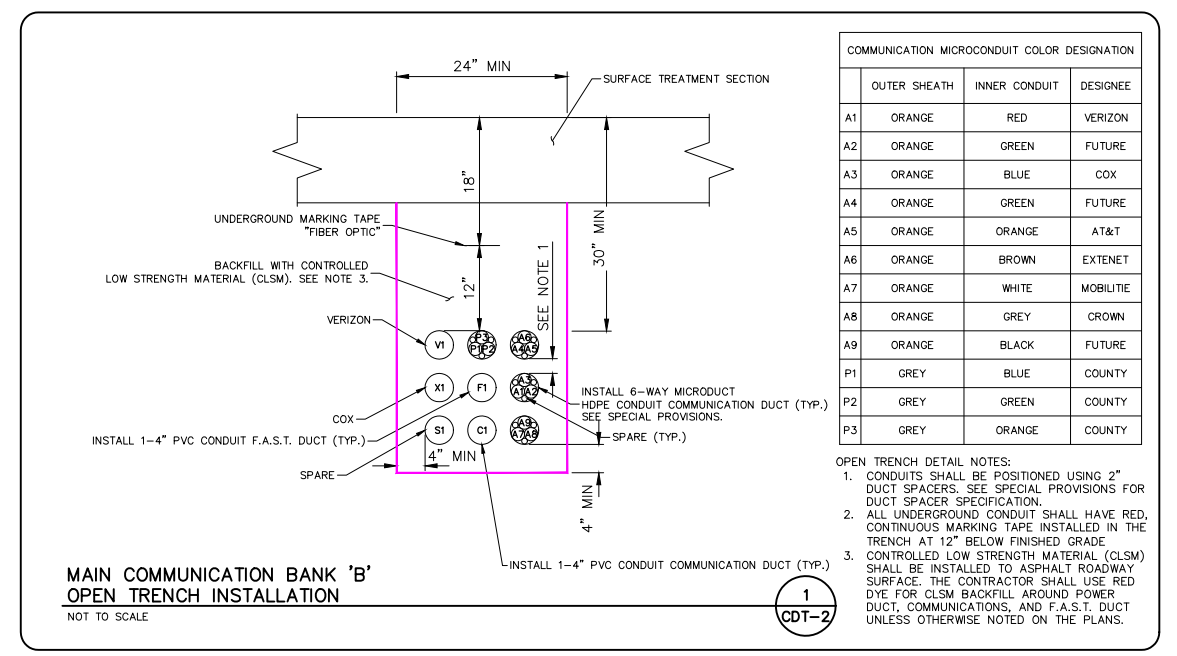
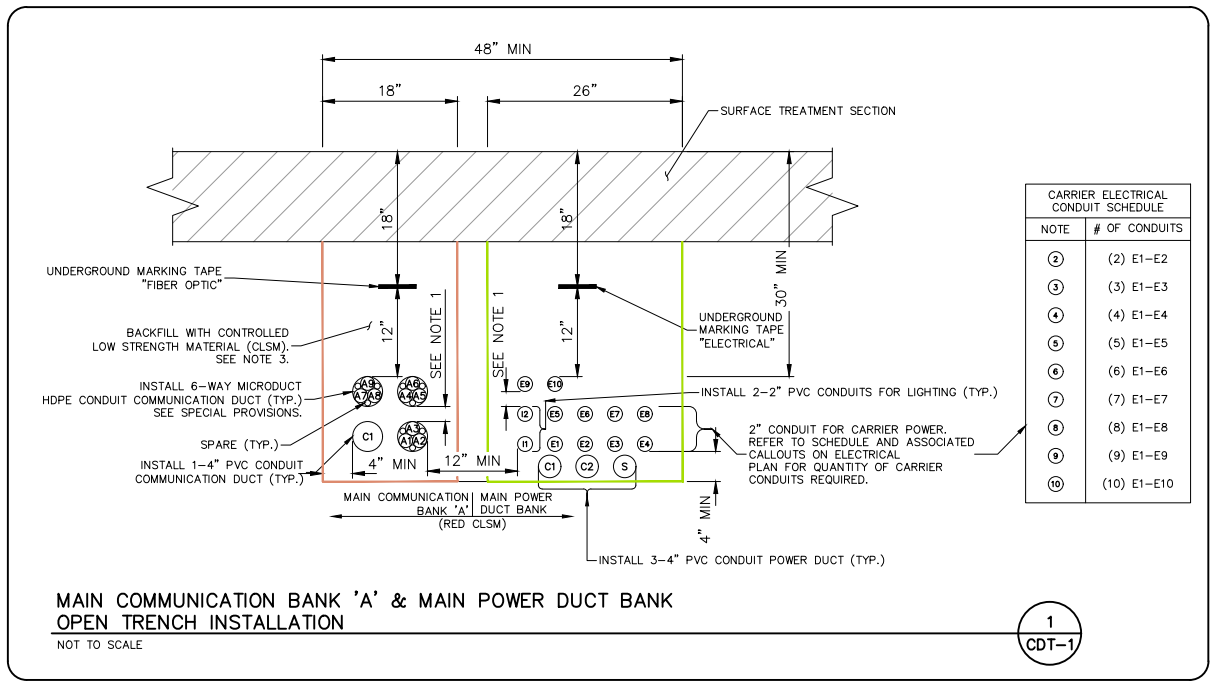
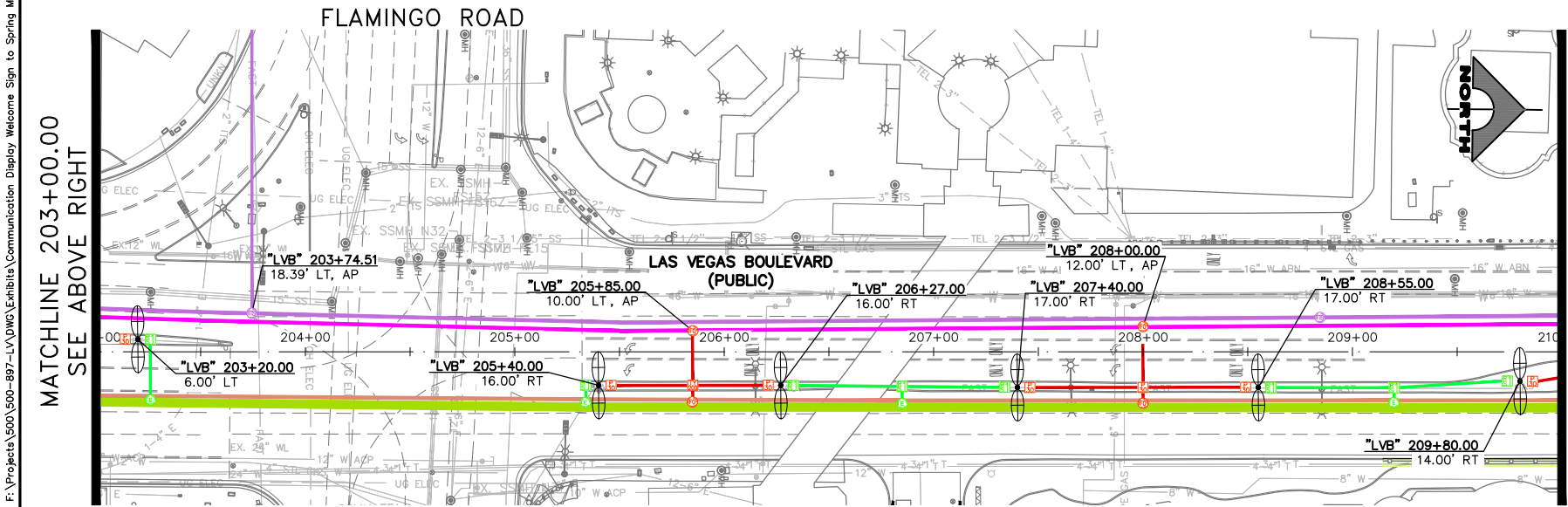
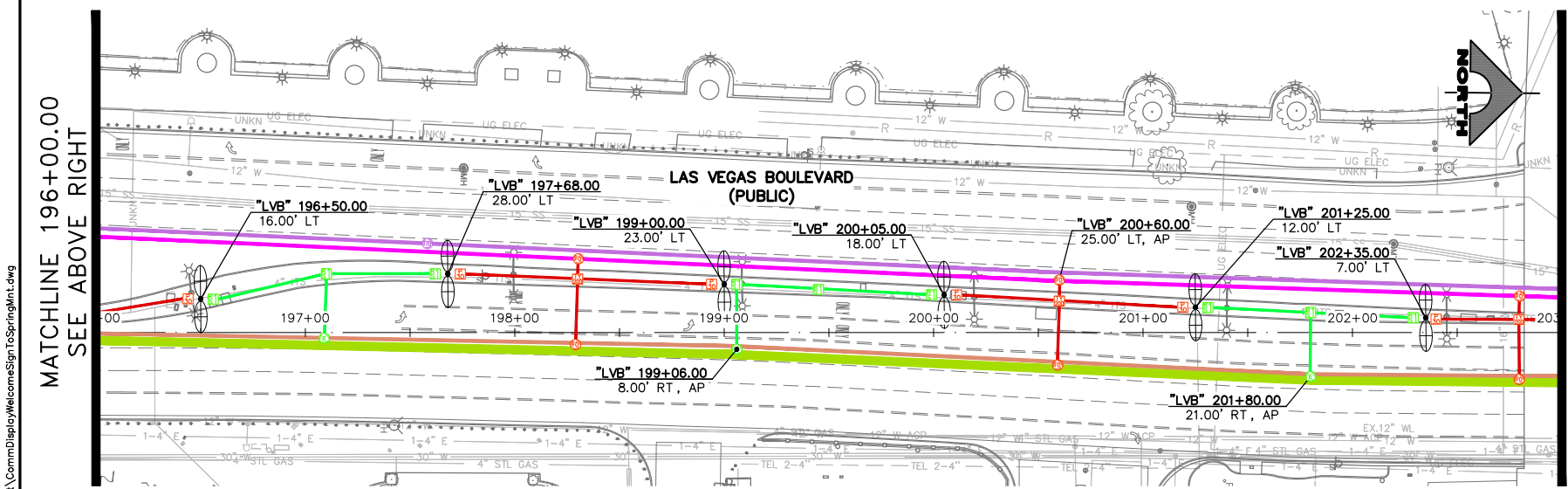
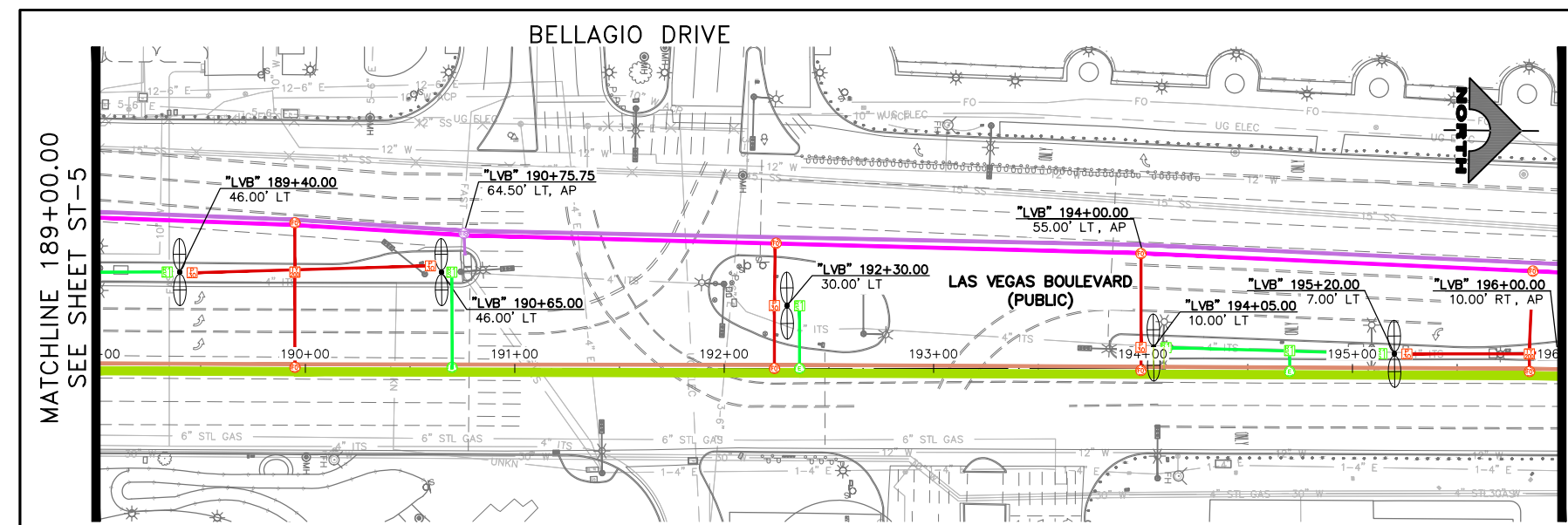
REV. NO.	DATE	DESCRIPTION	APPROVED



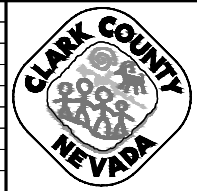
**LAS VEGAS BOULEVARD**  
 COMMUNICATION/POWER ALIGNMENT  
 "LVB" 168+00 TO "LVB" 189+00  
 CLARK COUNTY, NEVADA, DEPARTMENT OF PUBLIC WORKS

PROJECT No: 500-897-LV DRAWN BY: JAY  
 DESIGNED BY: JAY CHECKED BY: TAM  
 APPROVED BY: \_\_\_\_\_  
**GCV** ENGINEERS & SURVEYORS  
 1555 S. RAINBOW BLVD.  
 LAS VEGAS, NV 89146  
 T: 702.804.2000  
 F: 702.804.2299  
 gcvengineering.com

SCALE		DRAWING NO.
HORIZ: 1" = 40'	VERT: NONE	ST-5
FIELD BOOK		SHT. 5 OF 8
		L-XXXX



REV. NO.	DATE	DESCRIPTION	APPROVED



**LAS VEGAS BOULEVARD  
COMMUNICATION/POWER ALIGNMENT  
"LVB" 189+00 TO "LVB" 210+00  
CLARK COUNTY, NEVADA, DEPARTMENT OF PUBLIC WORKS**

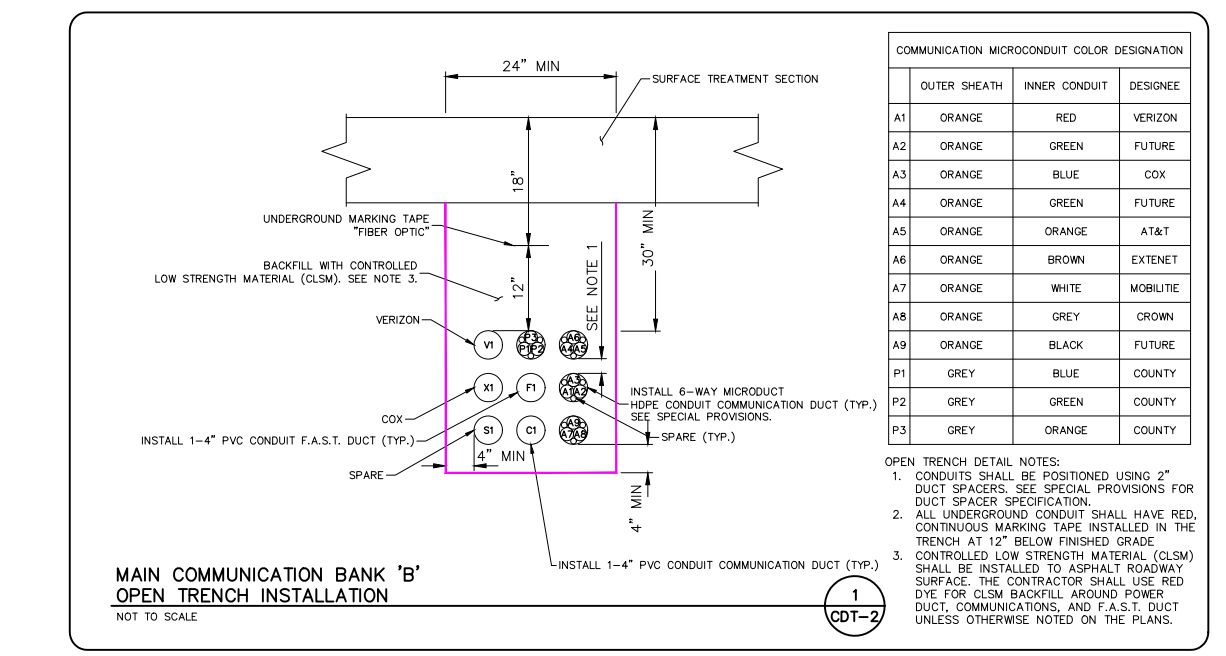
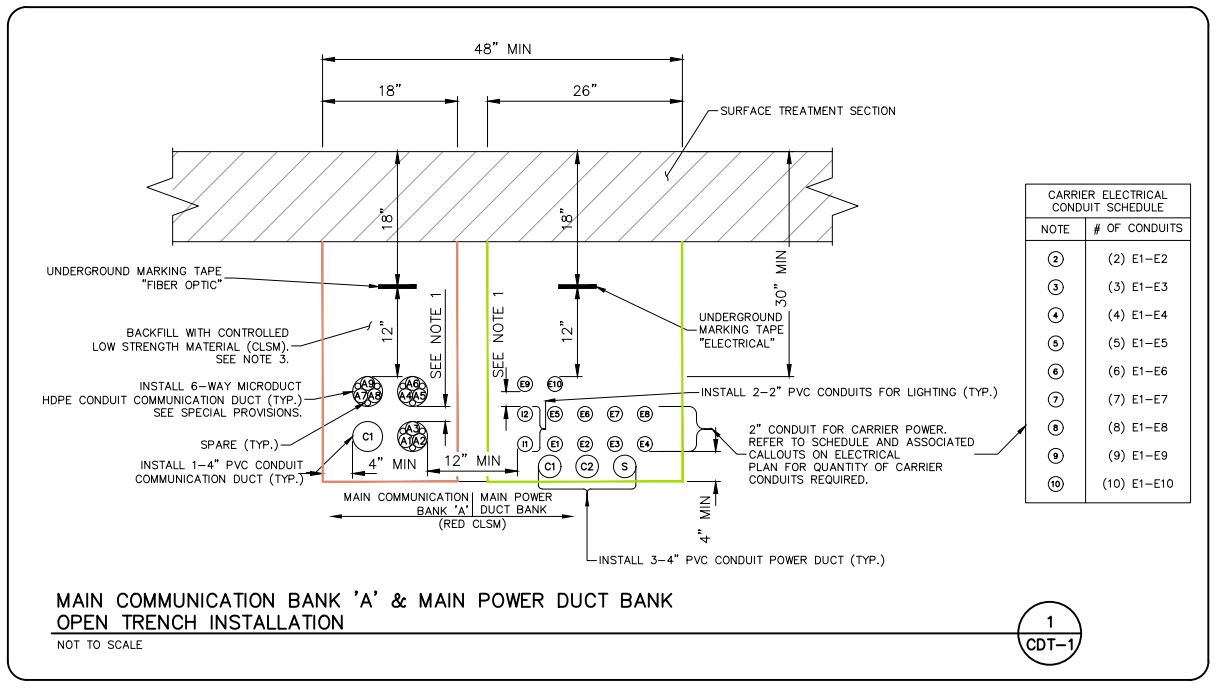
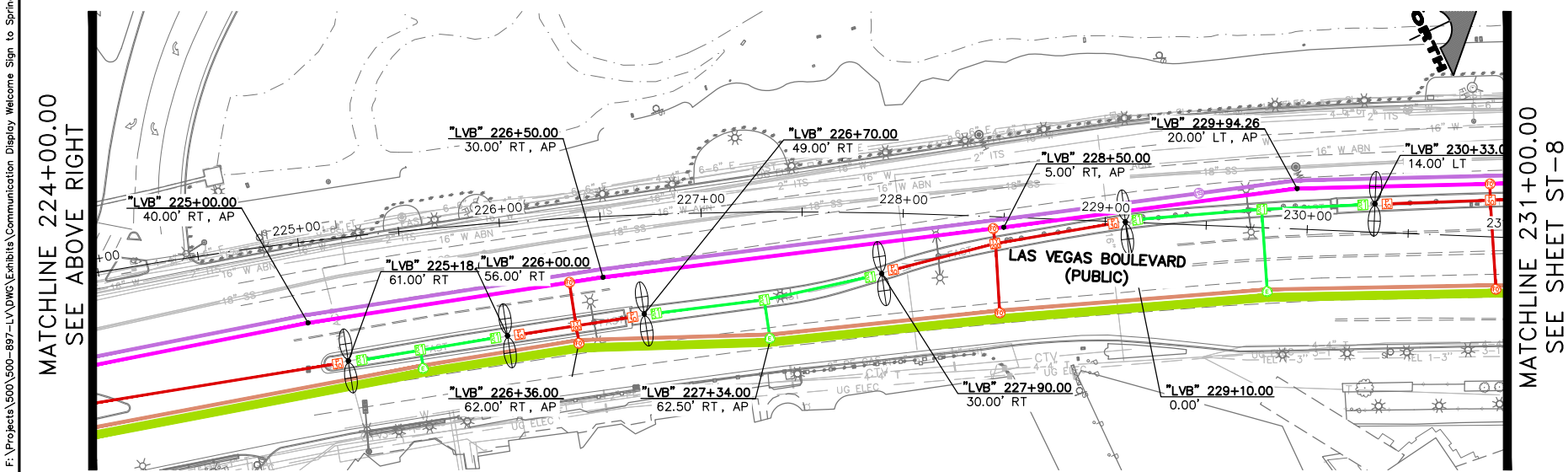
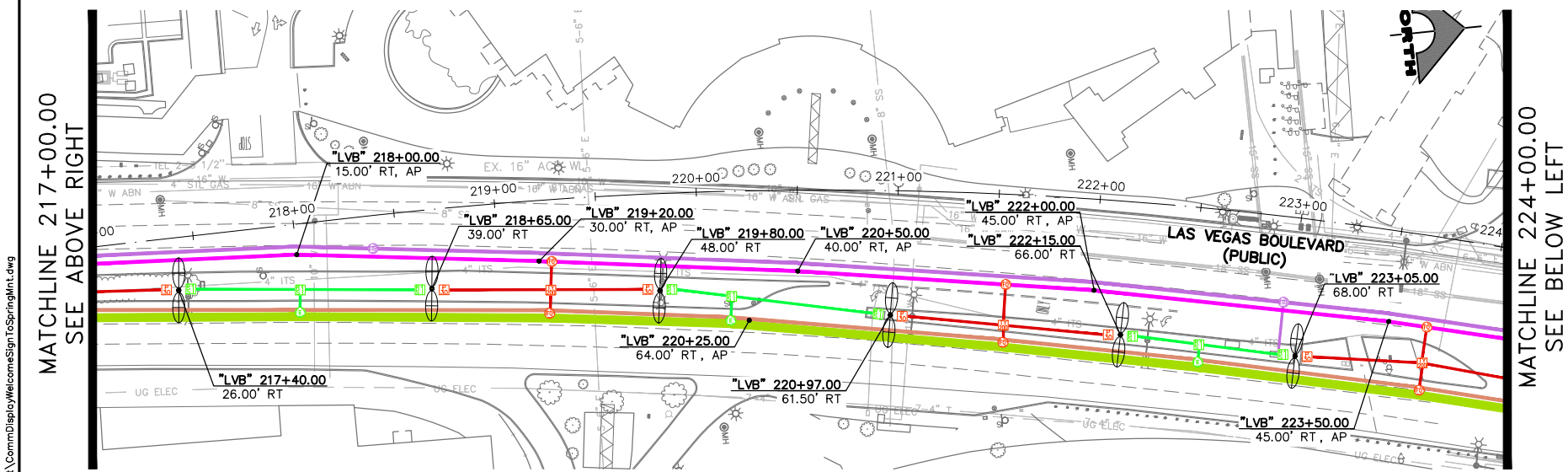
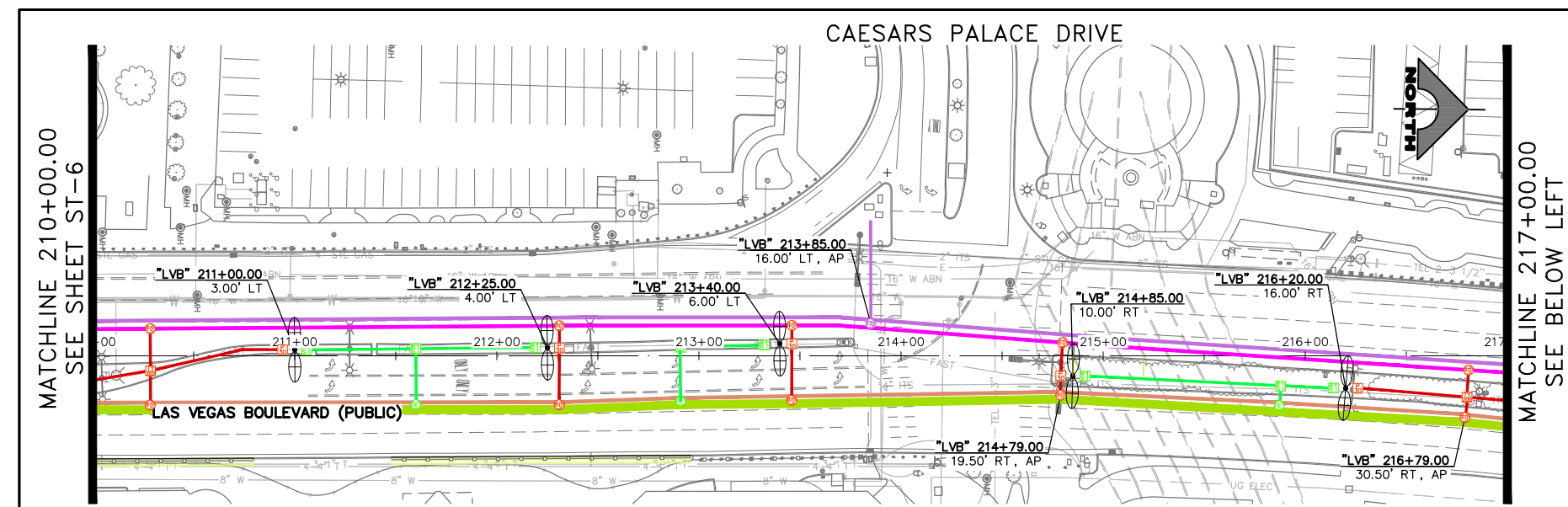
PROJECT No: 500-897-LV DRAWN BY: JAY  
 DESIGNED BY: JAY CHECKED BY: TAM  
 APPROVED BY: \_\_\_\_\_

**GCV**  
ENGINEERS SURVEYORS

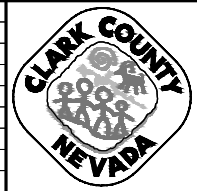
1555 S. RAINBOW BLVD.  
LAS VEGAS, NV 89146  
T: 702.804.2000  
F: 702.804.2299  
gcvengineering.com

SCALE	DRAWING NO.
HORIZ: 1" = 40'	<b>ST-6</b>
VERT: NONE	
FIELD BOOK	SHT. 6 OF 8
	L-XXXX

06-02-21 19:12:51 J:\Projects\500\500-897-LV\DWG\Exhibits\Communication Display Welcome Sign to Spring Mt\CommDisplayWelcomeSignToSpringMt.dwg  
 J:\Users\jason



REV. NO.	DATE	DESCRIPTION	APPROVED



**LAS VEGAS BOULEVARD**  
 COMMUNICATION/POWER ALIGNMENT  
 "LVB" 210+00 TO "LVB" 231+00  
 CLARK COUNTY, NEVADA, DEPARTMENT OF PUBLIC WORKS

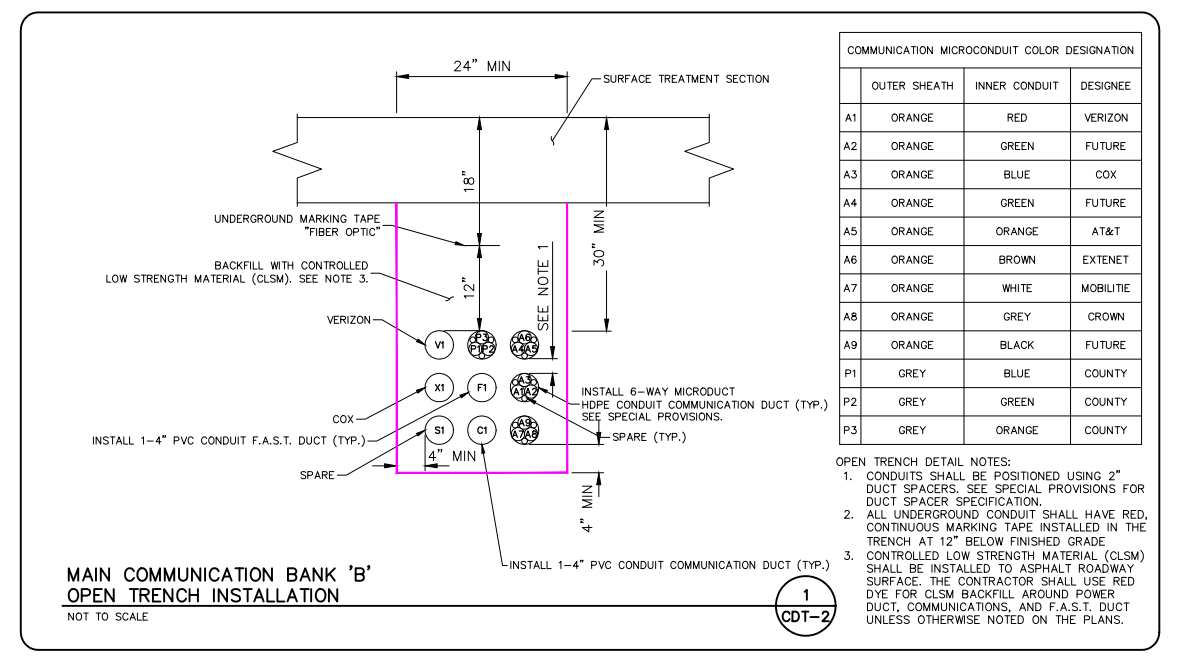
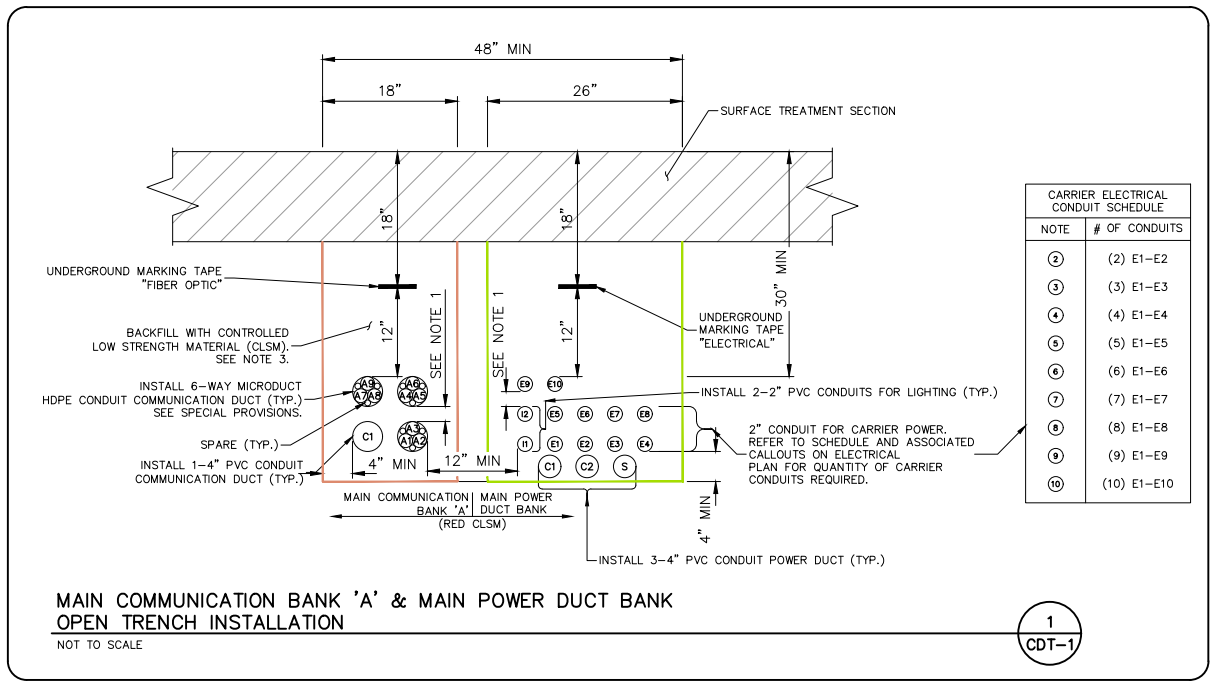
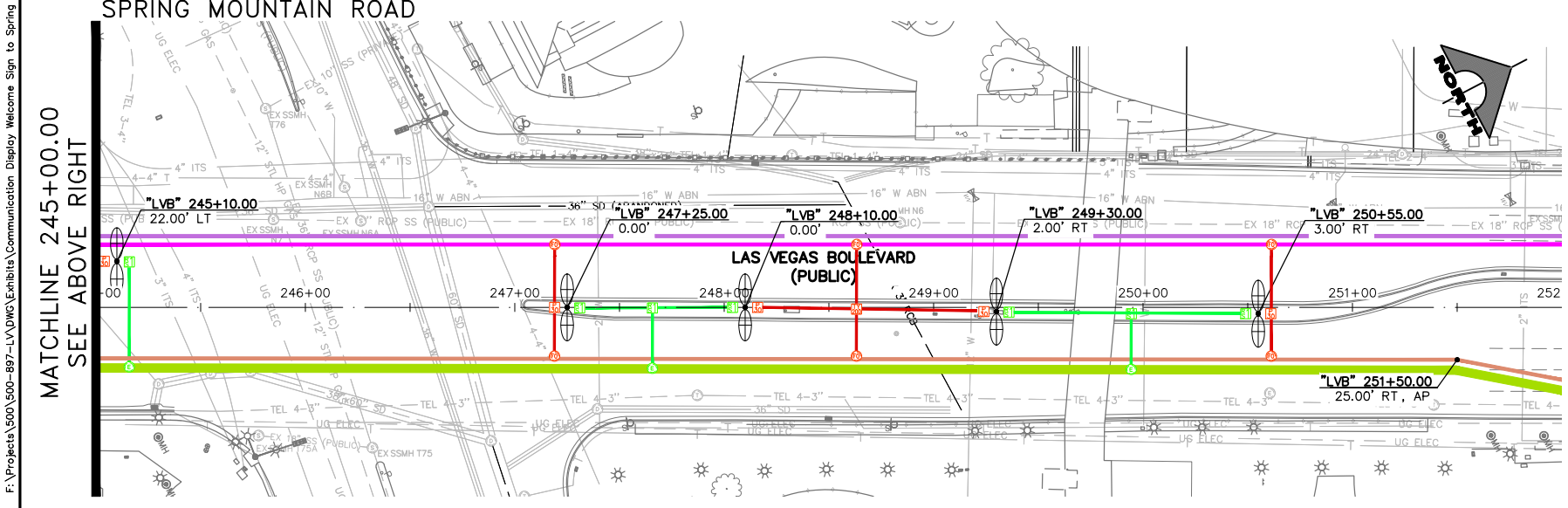
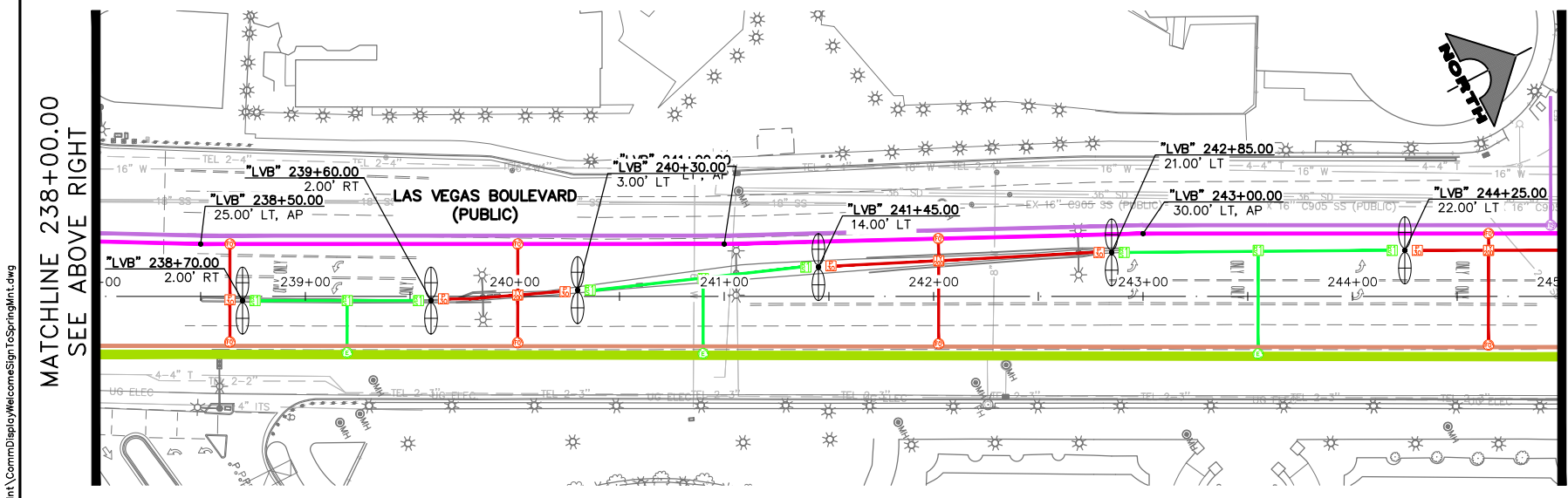
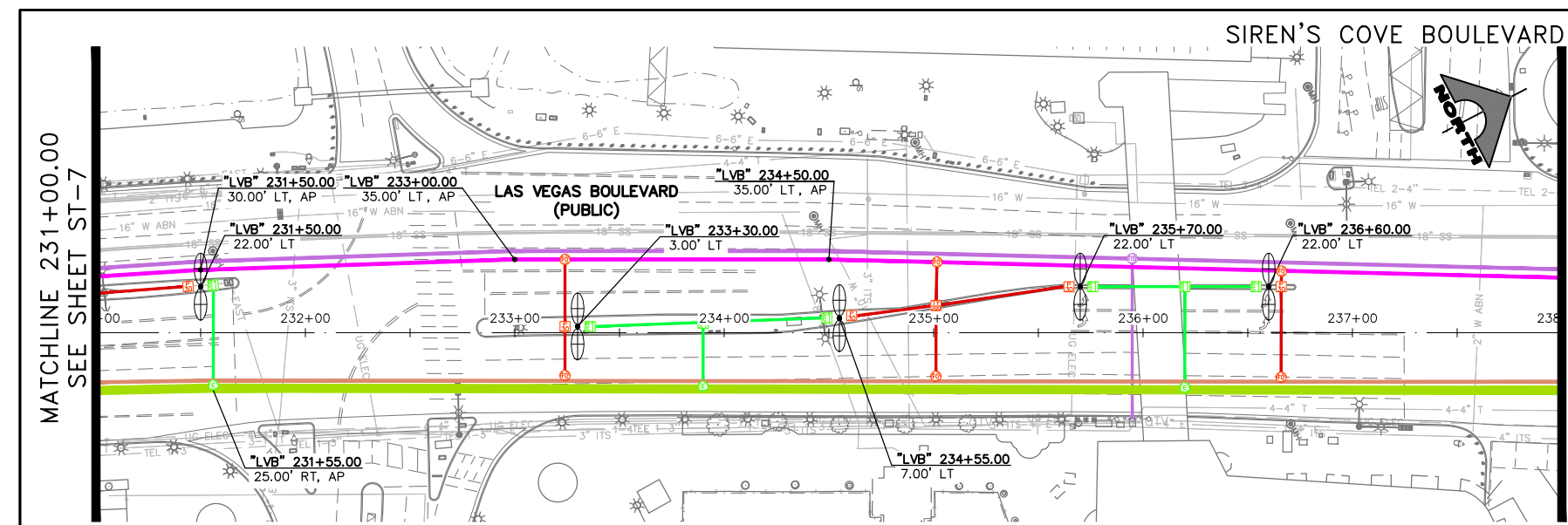
PROJECT No: 500-897-LV DRAWN BY: JAY  
 DESIGNED BY: JAY CHECKED BY: TAM  
 APPROVED BY: \_\_\_\_\_



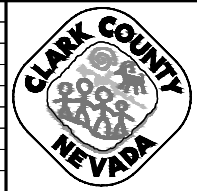
SCALE: HORIZ: 1" = 40'  
 VERT: NONE  
 FIELD BOOK: \_\_\_\_\_

DRAWING NO. ST-7  
 SHT. 7 OF 8  
 L-XXXX

06-02-21 19:13:25 F:\Projects\500-897-LV\DWG\Exhibits\Communication Display Welcome Sign to Spring Mt\CommDisplayWelcomeSignToSpringMt.dwg J:\jtsen



REV. NO.	DATE	DESCRIPTION	APPROVED



**LAS VEGAS BOULEVARD**  
COMMUNICATION/POWER ALIGNMENT  
"LVB" 231+00 TO "LVB" 252+00  
CLARK COUNTY, NEVADA, DEPARTMENT OF PUBLIC WORKS

PROJECT No: 500-897-LV DRAWN BY: JAY  
DESIGNED BY: JAY CHECKED BY: TAM  
APPROVED BY: \_\_\_\_\_



SCALE	DRAWING NO.
HORIZ: 1" = 40'	<b>ST-8</b>
VERT: NONE	SHT. 8 OF 8
FIELD BOOK	L-XXXX

F:\Projects\500-897-LV\DWG\Exhibits\Communication Display Welcome Sign to Spring Mt\CommDisplayWelcomeSignToSpringMnt.dwg  
06-02-21 19:14:00  
J:\Users\jason