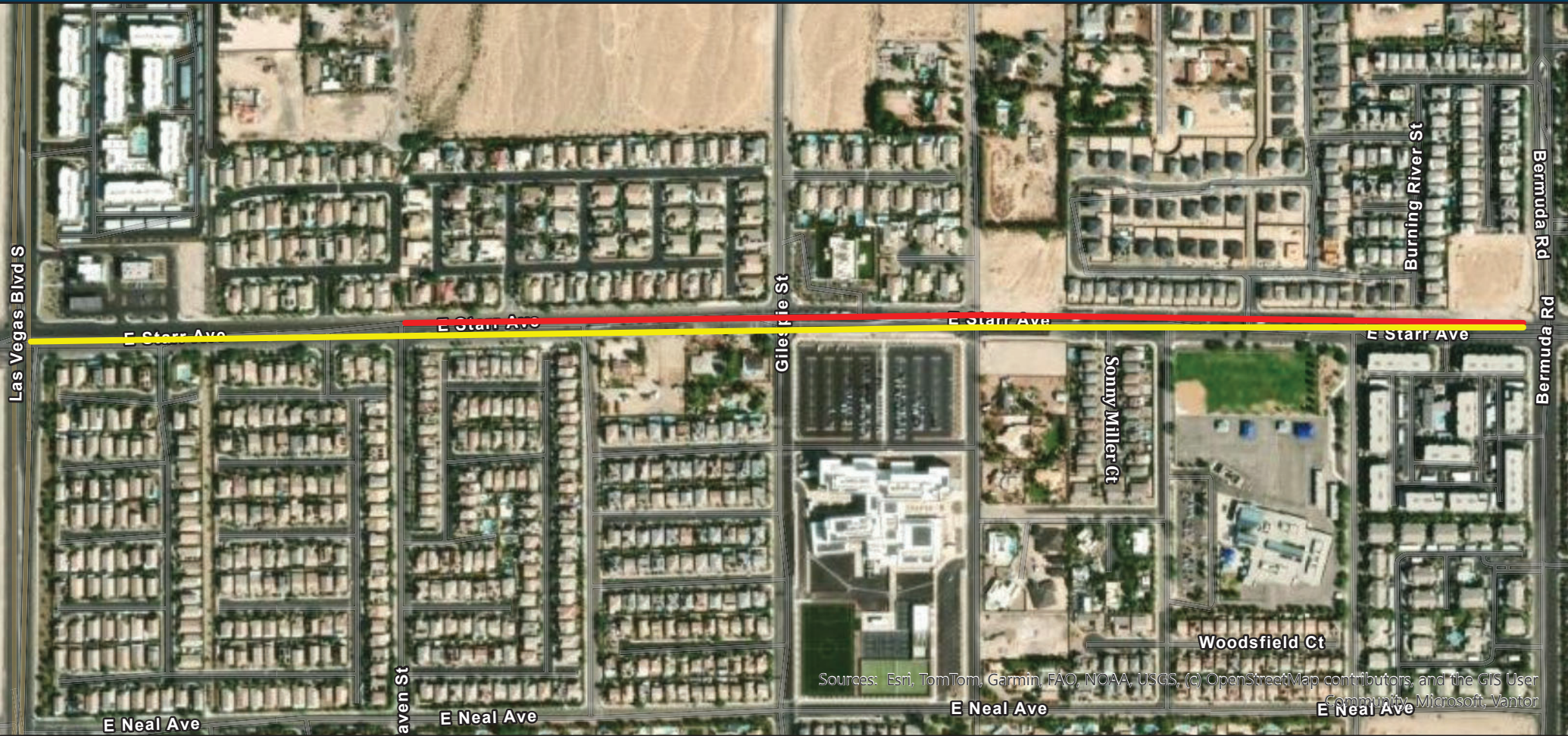




togetherforbetter

# Starr Avenue - Las Vegas Blvd to Bermuda Rd & Gilespie St. - Silverado Ranch Blvd to Pebble Rd



Sources: Esri, TomTom, Garmin, FAO, NOAA, USGS, (c) OpenStreetMap contributors, and the GIS User Community, Microsoft, Vantor

**MONTH OF 4/1/26 - 4/28/26**

**MONTH OF 4/28/26 - 4/30/26**

— 24 hours: North half closure from Bermuda to Haven.

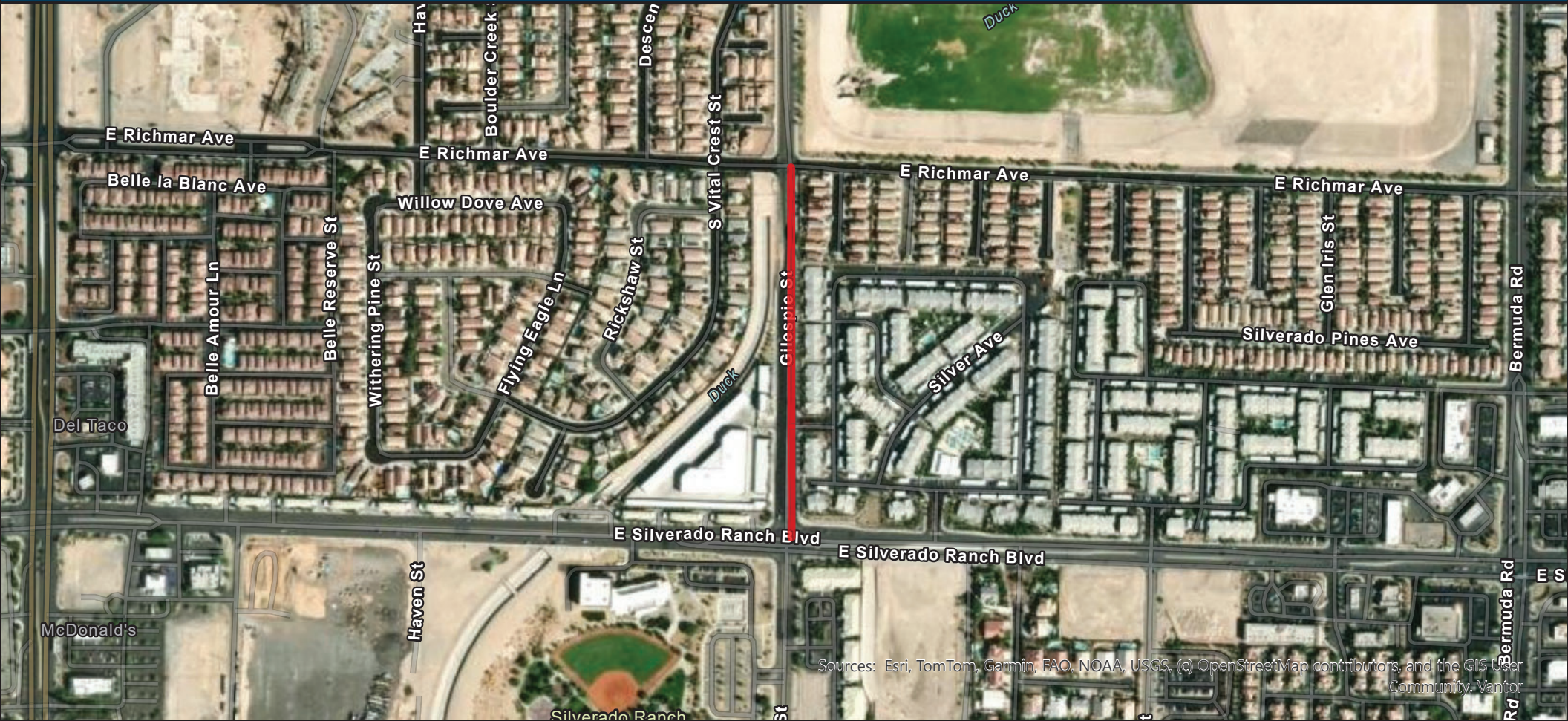
— Milling and paving on Starr Ave, between Las Vegas Blvd to Bermuda Rd. Be prepared for lane shifts.

## Monthly Look-Ahead



togetherforbetter

# Starr Avenue - Las Vegas Blvd to Bermuda Rd & Giles pie St. - Silverado Ranch Blvd to Pebble Rd



Sources: Esri, TomTom, Garmin, FAO, NOAA, USGS, (c) OpenStreetMap contributors, and the GIS User Community, Vantor

APRIL 2026

— Giles pie St SB right lane closed from Richmar Ave to Silverado Ranch Blvd

## Monthly Look-Ahead