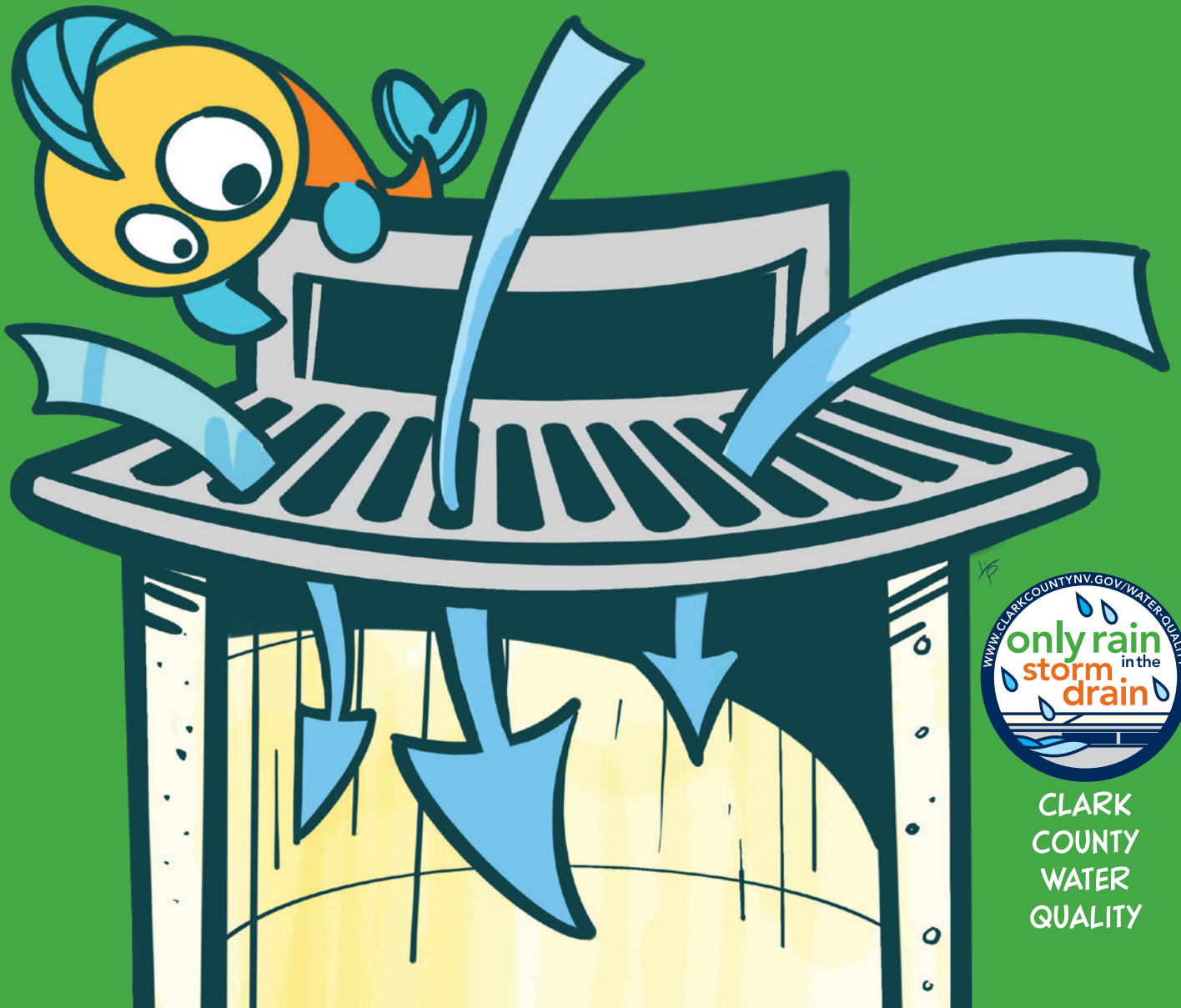


WHERE DOES OUR WATER GO?

STORMWATER ADVENTURE

GUIDE

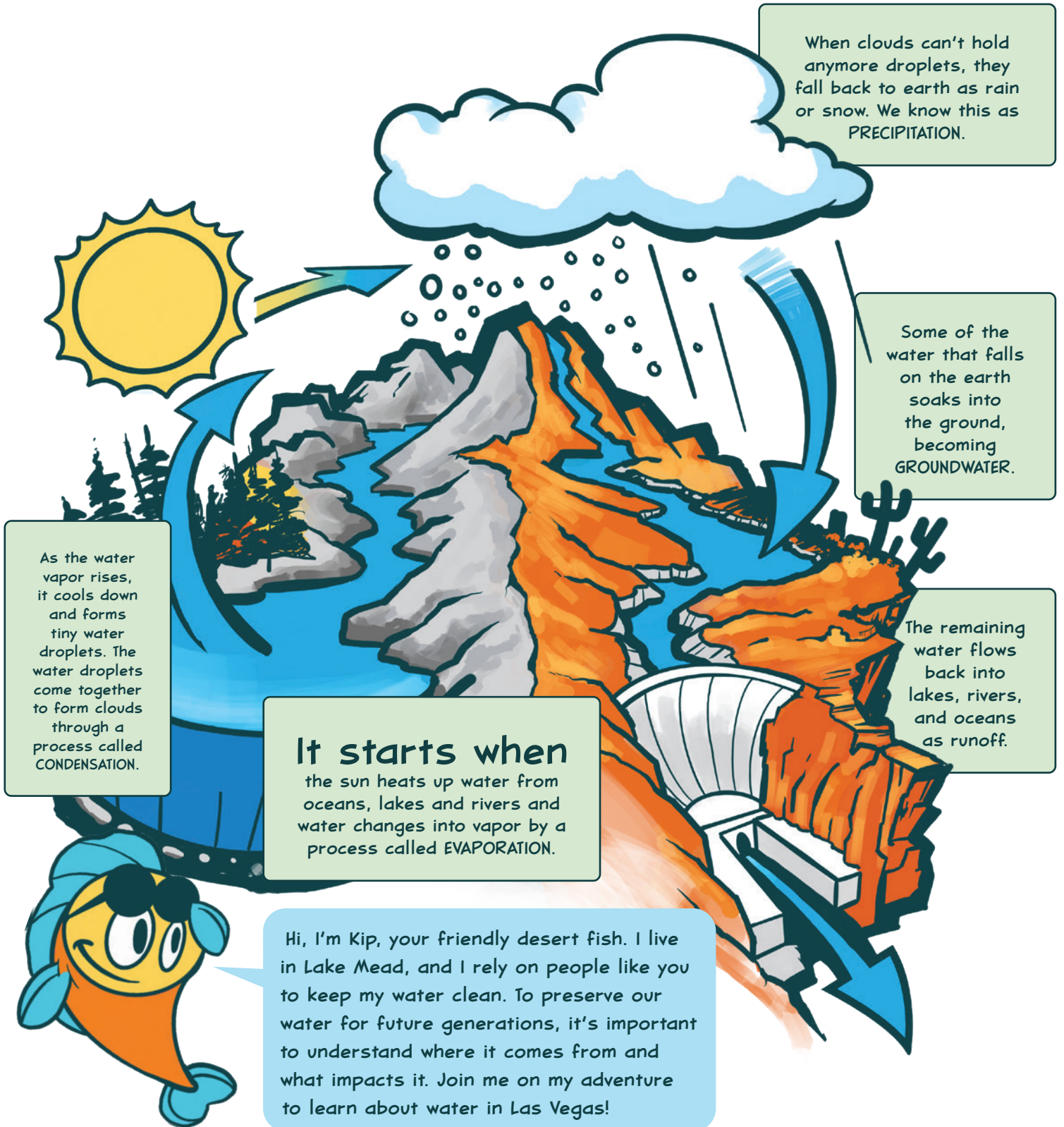


CLARK
COUNTY
WATER
QUALITY

WATER, WATER, EVERYWHERE...

WATER CYCLE

The water cycle has been recycling the same water for billions of years!



What is a **WATERSHED**?

A watershed is a region of land that drains rainwater into a body of water. Watersheds vary greatly in shape and size. No matter the location or environment, it is part of a watershed. Everyone in the world lives in a watershed!

In every watershed, water flows downhill from the highest spot to the lowest spot.

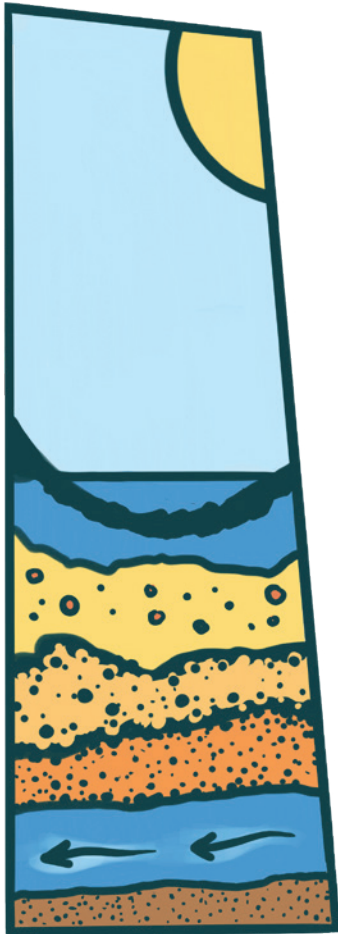
When it rains in the mountains around Las Vegas, all of the water flows downhill into the Valley and to Lake Mead. We live inside the Las Vegas Valley watershed!



The Las Vegas Valley watershed flows into the larger Colorado River watershed. One of the largest watersheds in the United States!

WATER IN THE DESERT

Here in the desert, clean water is our most valuable resource! Have you ever wondered where a city in the desert gets its water? The Las Vegas Valley was once a desert oasis containing artesian wells and meadows. A lot has changed since humans first settled here over 100 years ago.



GROUNDWATER

Groundwater is water that is stored underground in rock and soil layers. For years, wells pumped groundwater to the surface for people to use or grow food. This was the Valley's main water supply until the 1970s. The Valley was named Las Vegas, Spanish for "the meadows," after its groundwater-fed grasses and meadows.



ARTESIAN WELL

When groundwater is under a lot of pressure, the water will rise to the surface without using a pump. Artesian wells freely flow until the underground pressure drops. The earliest artesian wells flowed for 20 years.




COLORADO RIVER & LAKE MEAD


The construction of the Hoover Dam created Lake Mead. The water that fills Lake Mead starts as rain or snow in the Rocky Mountains and flows down the Colorado River. It is the main source of water for Las Vegas today. The demand for water from Lake Mead continues to increase each year.

WHERE DOES OUR WATER GO?


Have you ever wondered where does the water go when you flush the toilet? Or brush your teeth? Or when you wash your car? Between the storm drain system and the sanitary sewer system, many big drainage pipes exist beneath our streets to help protect the water in Lake Mead!




Water is life in a desert city. We drink it. We cook and clean with it. We even play in it when it rains! But what happens to RAINWATER that flows into storm drains?




The sanitary sewer system collects water from toilets, sinks and showers.




Water is taken to one of the Valley's wastewater treatment plants where it is treated and cleaned.




The storm drain system carries rainwater from roads, driveways and lawns into channels and detention basins.



The untreated runoff flows through the Las Vegas Wash before entering Lake Mead.



The treated water is released into the Las Vegas Wash before flowing into Lake Mead.



The untreated runoff that enters Lake Mead can contain pollutants harmful to fish, birds, and other wildlife. This is commonly called stormwater pollution.

A STORM'S "FIRST FLUSH"

When it's not raining, our streets and yards collect trash and other pollutants, which builds up over time.

When it eventually rains in the Las Vegas Valley, all the built-up trash and pollutants are "flushed" down storm drains, carrying all the harmful pollutants to Lake Mead.

This is known as "FIRST FLUSH."



Ugh! I have to swim in this?!

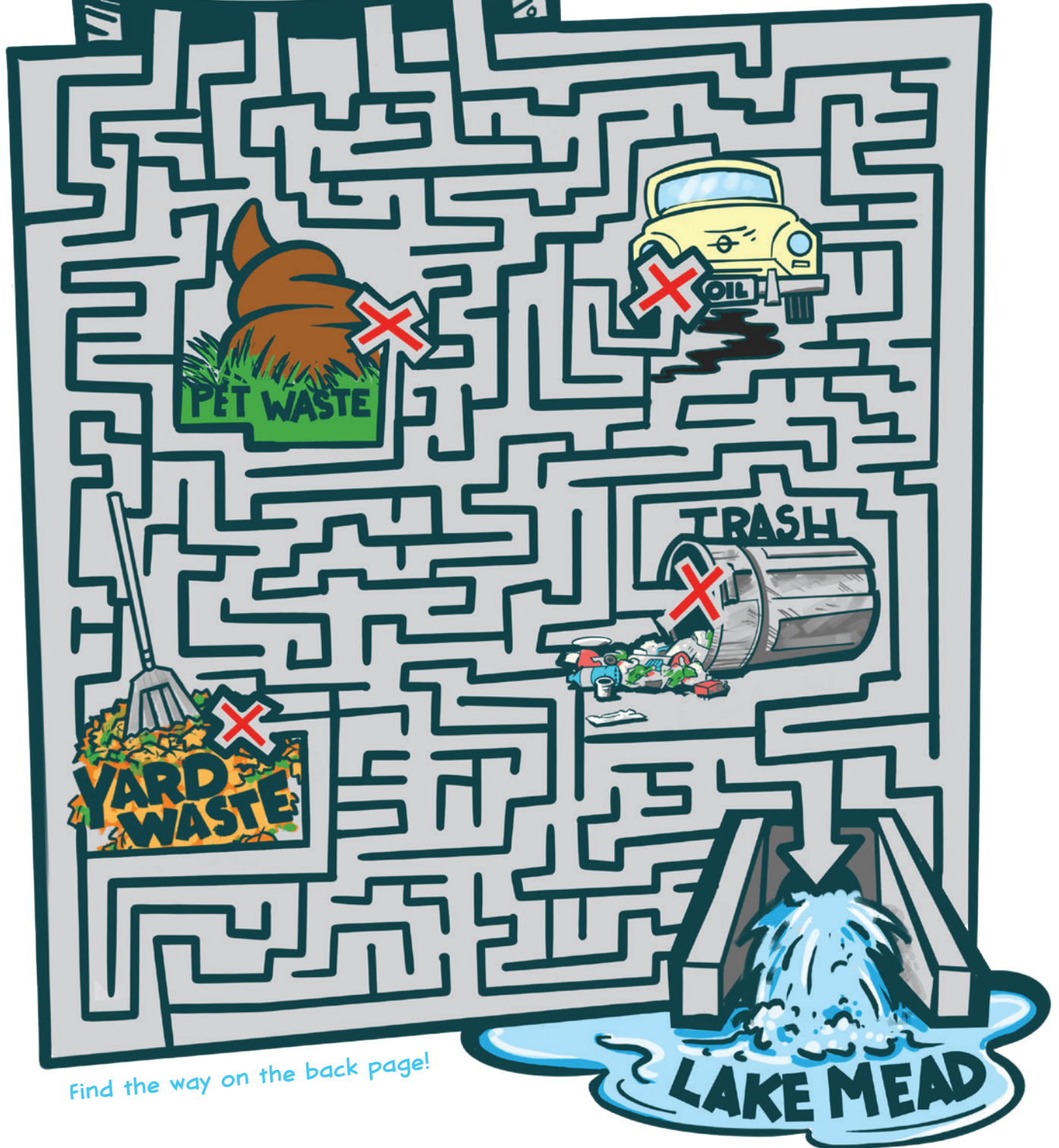
KIP'S

STORMWATER JOURNEY

Help Kip get the water through the maze pollutant free!

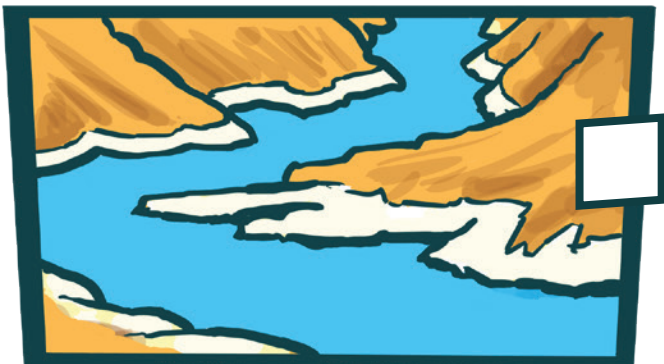
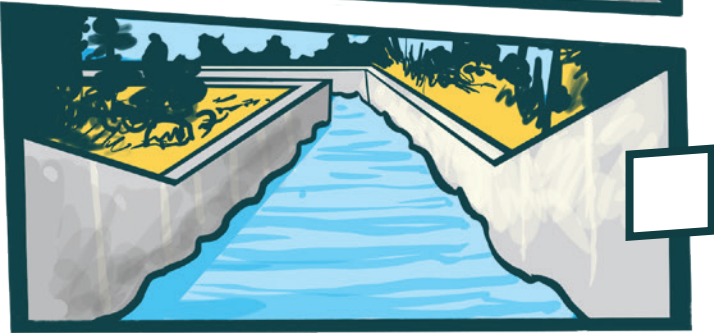


START HERE



Find the way on the back page!

MIX 'N MATCH



Draw a line from the drawing to the correct term



Las Vegas Wash/
Wetlands



Storm Drain



Lake Mead



Flood Channel



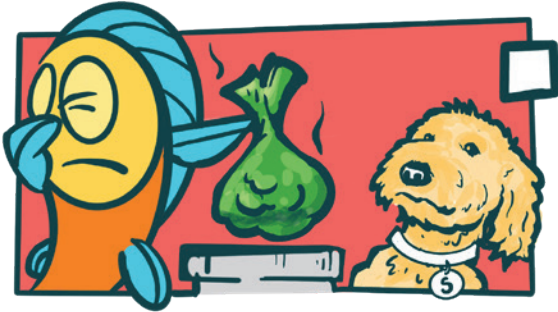
Detention Basin



You've probably
seen most of
these :)

WHICH KIP IS PREVENTING STORMWATER POLLUTION?

Check the boxes where Kip is preventing stormwater pollution.



Find the answers
on the back page!

Don't pollute
my home!



KIP'S WORD SEARCH

CAN YOU FIND ALL THE WORDS THAT KIP HAS HIDDEN?



R	Q	N	H	H	R	N	D	M	K	Q	Y	L	D	L	L	X	I
H	B	C	E	X	R	P	H	A	B	I	T	A	T	Z	Y	S	F
R	U	P	O	L	L	U	T	A	N	T	U	K	N	Y	P	T	F
X	R	G	A	N	X	E	E	F	H	B	Y	E	P	H	F	S	O
Q	J	A	P	U	T	M	S	N	I	N	A	M	K	W	G	U	N
A	A	Z	I	Z	Q	A	O	I	V	Y	X	E	P	P	H	I	U
M	D	O	X	N	W	H	M	N	W	I	O	A	G	P	H	S	R
U	R	Y	D	G	K	I	P	I	S	Y	R	D	O	H	T	N	K
I	Y	K	Z	O	Q	E	J	I	N	O	N	O	T	R	X	D	A
L	R	O	W	X	O	O	H	C	B	A	O	N	N	P	P	R	D
Z	S	D	E	H	S	R	E	T	A	W	T	N	E	M	D	A	J
S	B	S	T	O	R	M	W	A	T	E	R	E	W	P	E	I	R
K	S	E	L	R	I	U	E	C	B	E	F	G	H	J	D	N	T
H	X	F	O	G	E	S	C	L	P	O	U	T	F	A	L	L	T
V	I	N	I	W	A	S	H	I	L	A	S	V	E	G	A	S	K
Z	G	Y	A	Z	N	G	E	D	Z	N	A	X	O	C	I	T	H
T	U	L	A	B	U	A	H	D	O	C	B	U	Q	N	K	F	W
A	A	N	D	J	K	N	R	I	V	E	R	D	I	L	C	D	U

SEARCH TERMS:

STORMWATER

POLLUTANT

RIVER

OUTFALL

DRAIN

RAIN

CONTAMINATE

LAKE MEAD

DESERT

WATERSHED

RUNOFF

WASH

ENVIRONMENT

MONSOON

KIP

HABITAT

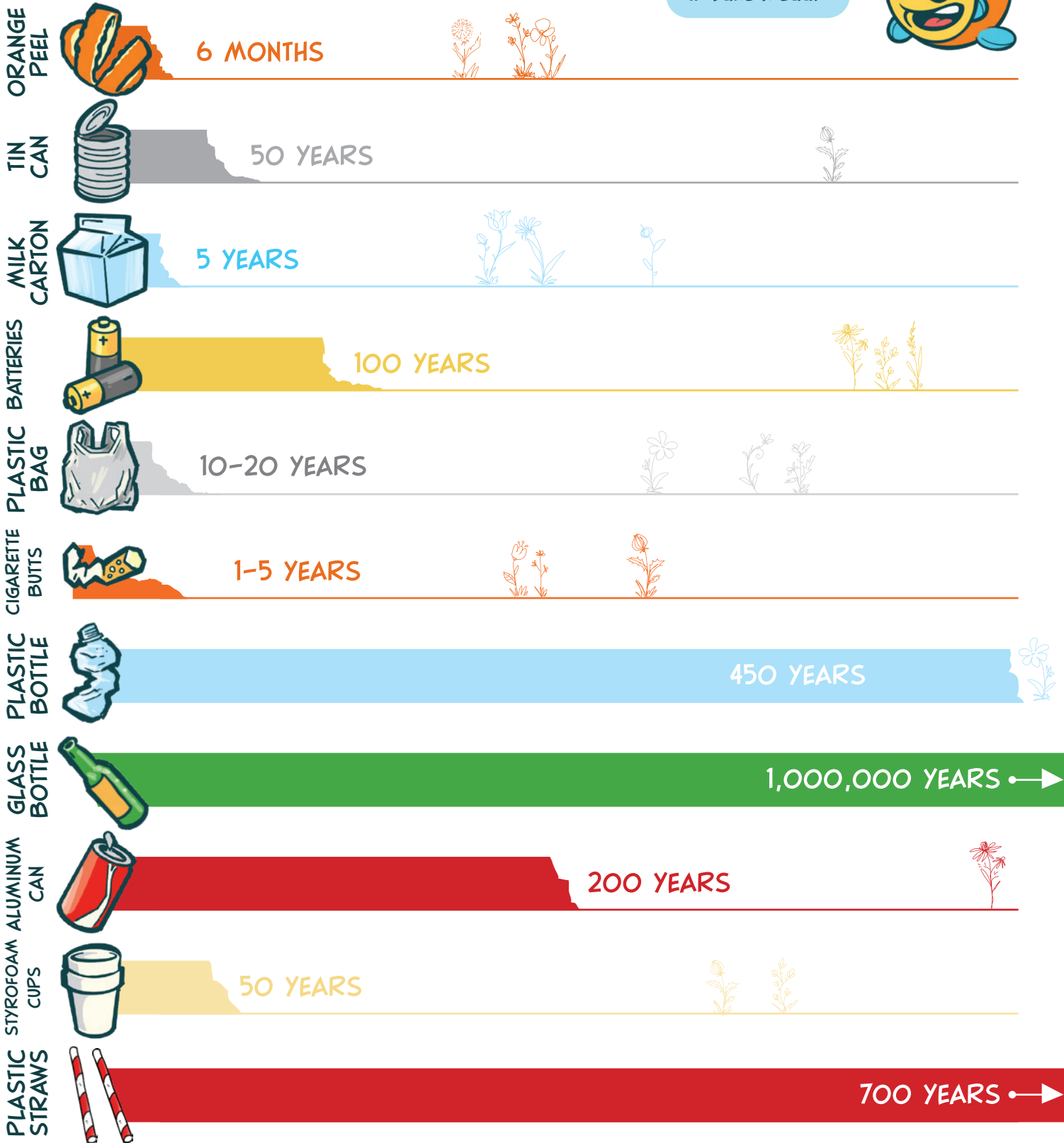
LAS VEGAS

Words are FORWARD, BACKWARD, DIAGONAL and UP AND DOWN
Find the answers on the back page!

HOW LONG TILL IT'S GONE?

Trash sticks around a lot longer than you think. Some common everyday items can last for hundreds to millions of years! Take a look below to see how much time it takes. The longer the line, the longer it takes to break down.

What trash do you think is the most common in Lake Mead?



REMEMBER! ONLY RAIN IN THE STORM DRAIN!



This adventure book was developed by Clark County Water Quality. Funding provided, in part, by grant funds administered by the Nevada Division of Environmental Protection. Illustrated by Loren Purcell of Paper Zombies.



VISIT **STORMWATERVEGAS.COM**
FOR MORE STORMWATER ADVENTURES!



ANSWERS

