

Adaptive Management in the Desert Conservation Program

August 18, 2025



MOJAVEMAX.COM



**desert conservation
PROGRAM**

Purpose

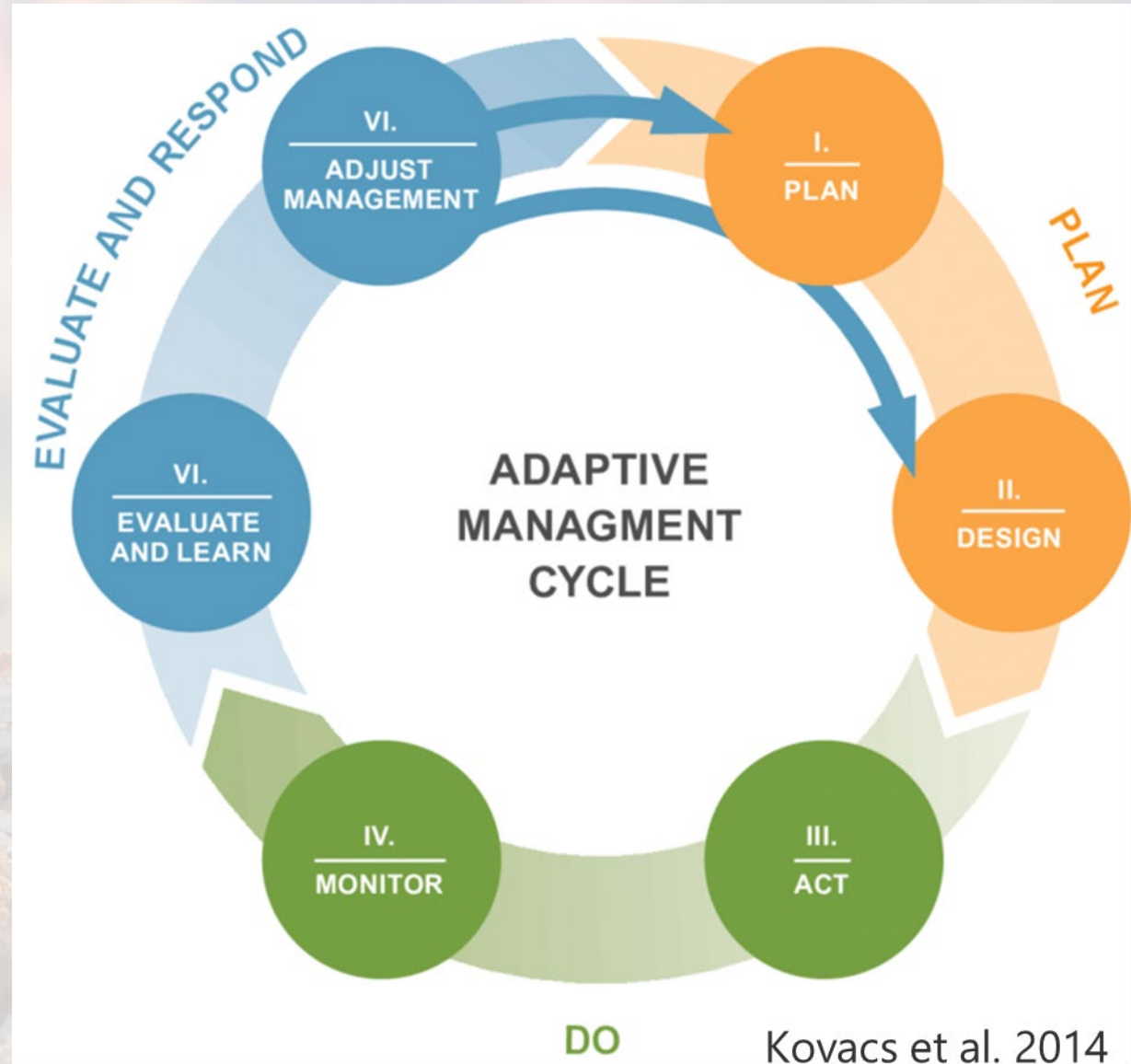
The Adaptive Management Program:

- Helps direct expenditures
- Provides an objective, science-based approach to the implementation of the MSHCP
- Ensures an adaptive management approach to all management actions
- Lead projects that further the MSHCP



Focus

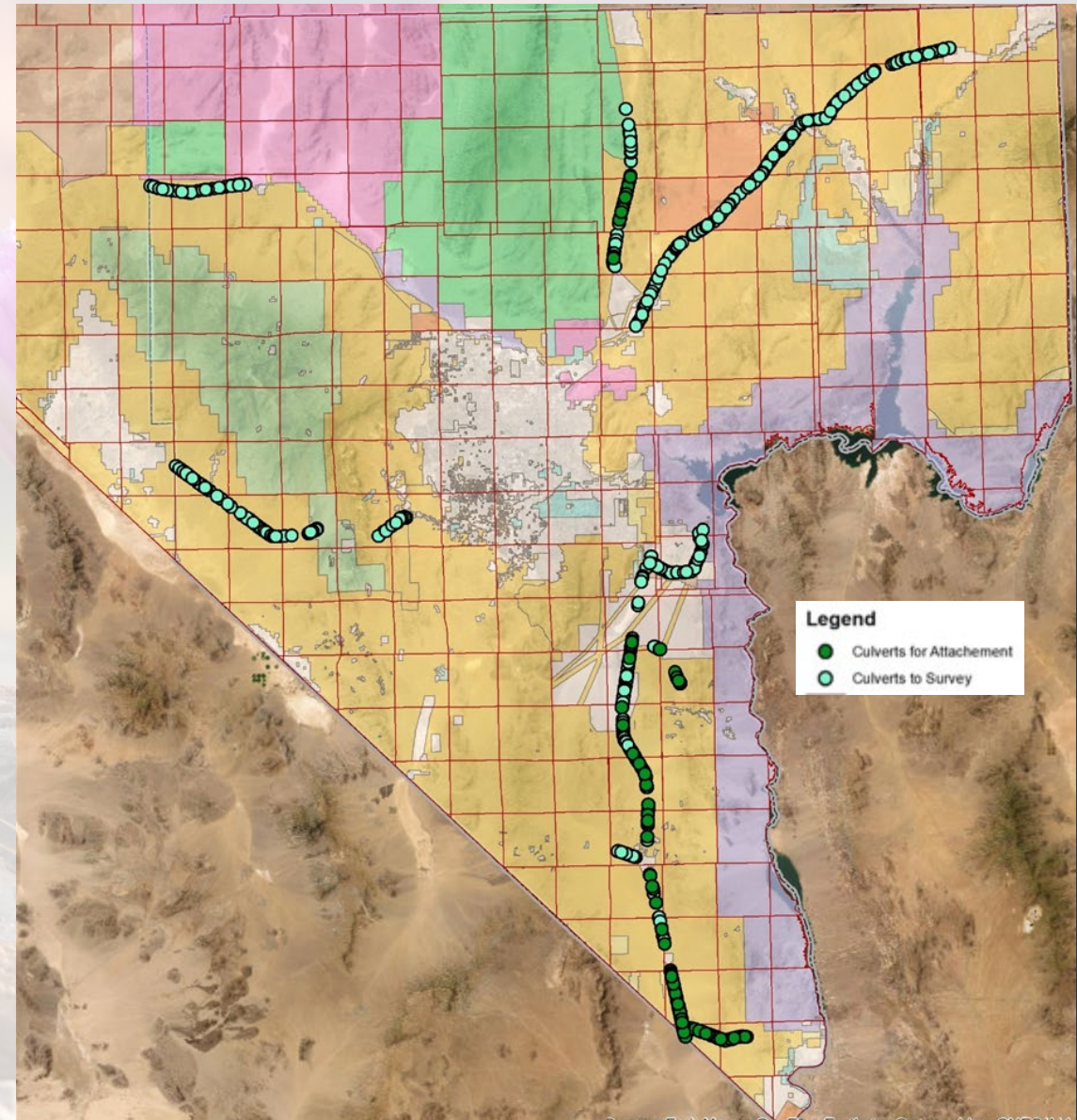
- Successes
- Opportunities
- Evaluation of projects and the program
- Dissemination of data



Kovacs et al. 2014

Connectivity

- 2022 Connectivity Management Plan
 - 51 passable culverts in Clark County
- NDOT retrofits
- SNPLMA Connectivity Plan Implementation
 - Re-examine all culverts
 - 30-40 culverts attached
 - Fire management plan

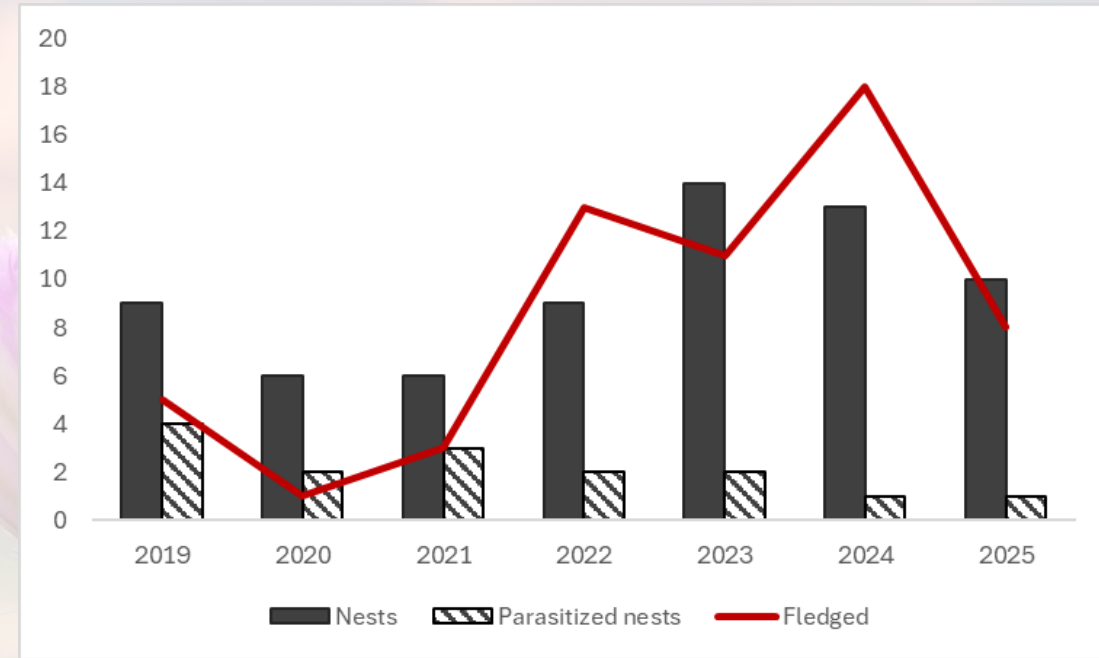


Obj 1.5: Identify critical uncertainties

Obj 1.7: Protect and enhance connectivity

Nest parasitism

- 33%-50% of nest parasitized pre-treatment
- Began removing Cowbirds in 2021
- Treatment has resulted in more nests less parasitism and more fledglings



Obj 1.3: Protect, restore or otherwise increase the quality and quantity of habitat...

Obj 2.1: Monitor covered wildlife species as described in the AMMP...

Thermal refugia

- Began thermal refugia study in 2023
- Found 1 locations that meet SWFL requirements
- Began restoration at that area to increase patch size



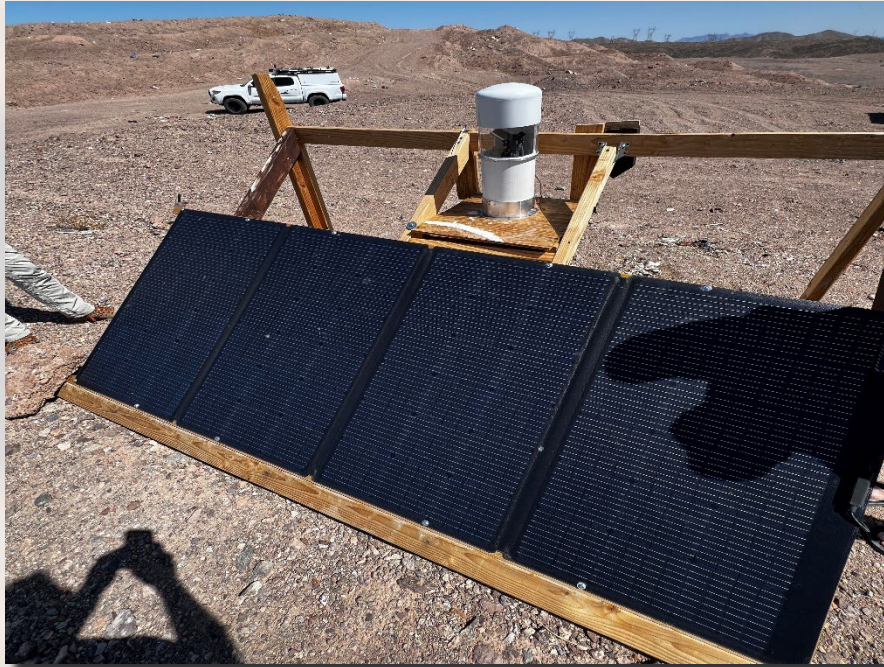
Obj 1.3: Protect, restore or otherwise increase the quality and quantity of habitat...

Obj 1.4: Incorporate natural ecological, hydrological, and geomorphological processes into restoration design...

Obj 1.6: Incorporate concepts of ecosystem redundancy and representation to promote ecological resiliency...

technology

- Drones
- ARUs
- Lasers



Obj 1.3: Protect, restore or otherwise increase the quality and quantity of habitat...

Obj 2.1: Monitor covered wildlife species...

Cattle Deterrent



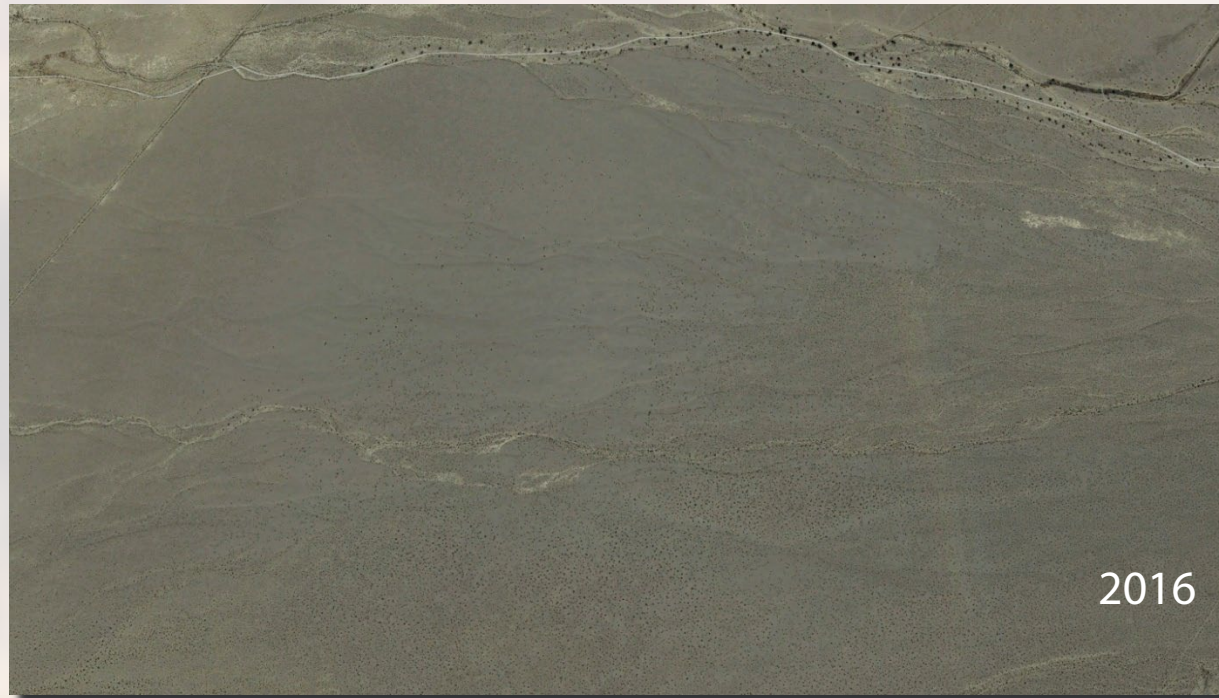
- NV is a Fence out state
 - Expensive to install and maintain
 - Can't fence across the river
 - River may move
 - Cattle eventually get in
- Deterrents may provide a cheaper option to keep cattle away from restoration activities



Obj 1.3: Protect, restore or otherwise increase the quality and quantity of habitat...

BCCE Route Proliferation

- Boulder City Police Department patrols the BCCE
- Access issues in some areas



Obj 3.2: Protect habitats within the BCCE from unauthorized land use through vigilance and education...

BCCE translocation plan



- Implemented in 2014 updated in 2017
- Allowed for the revised translocation of 121 adults and 335 juveniles
 - 40 remained from the 2014 release
 - 38 released in 2017
 - 32 adults and 72 juv. Released from 2018-2025
- 11 Adult spaces remain under previous plan



Obj 2.1: Monitor covered wildlife species...

Obj 2.3: Translocate and augment desert tortoise populations...

Obj 2.4: Ensure the best available scientific info is being incorporated into population management...

Data Dissemination



- Symposia / Conferences
- Publications
- Website


Received: 19 January 2024 | Revised: 25 September 2024 | Accepted: 6 November 2024

DOI: 10.1002/wsb.1571



RESEARCH ARTICLE

High-resolution remote sensing for quantifying vegetation structure as avian habitat

Seth Harju¹  | Tarita Harju² | Jodi Berg² | Richard Alward³ | Scott Cambrin⁴

Received: 8 April 2025 | Revised: 11 June 2025 | Accepted: 23 June 2025


DOI: 10.1002/ecs2.70381

ARTICLE

Animal Ecology

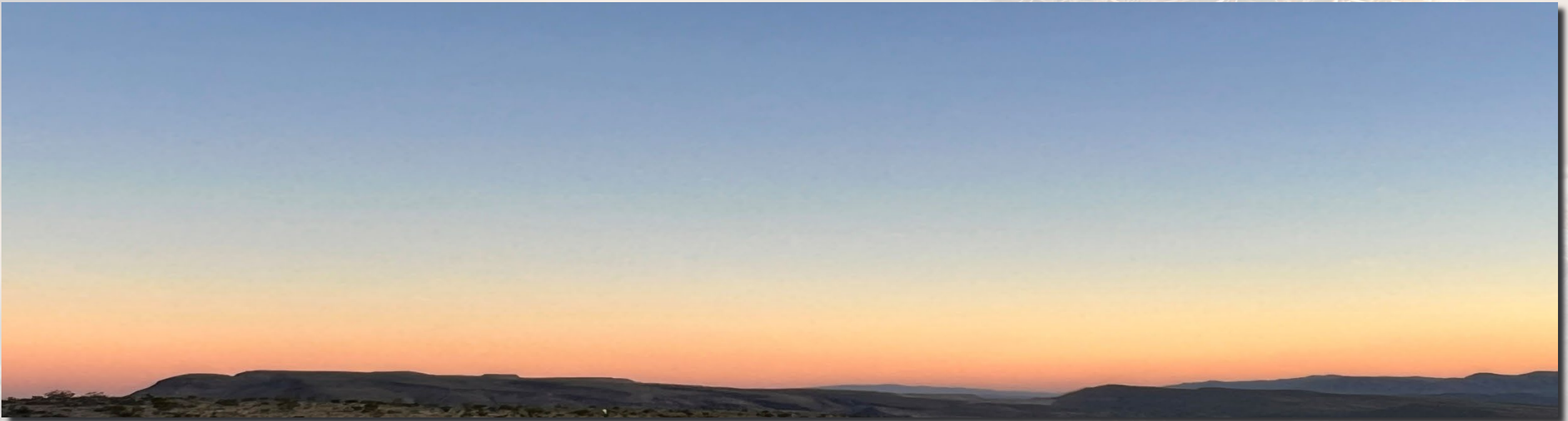
ECOSPHERE
AN ESA OPEN ACCESS JOURNAL

Ephemeral vegetation drivers of occupancy dynamics of Mojave desert tortoises (*Gopherus agassizii*)

Seth M. Harju¹  | Scott M. Cambrin² | Stefanie Ferrazzano²

Conclusions

- Working to meet BGO's
- Looking for new ways to solve problems
- Trying to shift expenditures from monitoring to management



THANK YOU TO THE PERMITEES



Questions or Memes

When you show someone something you're really proud of and they say "cool" and change the subject

