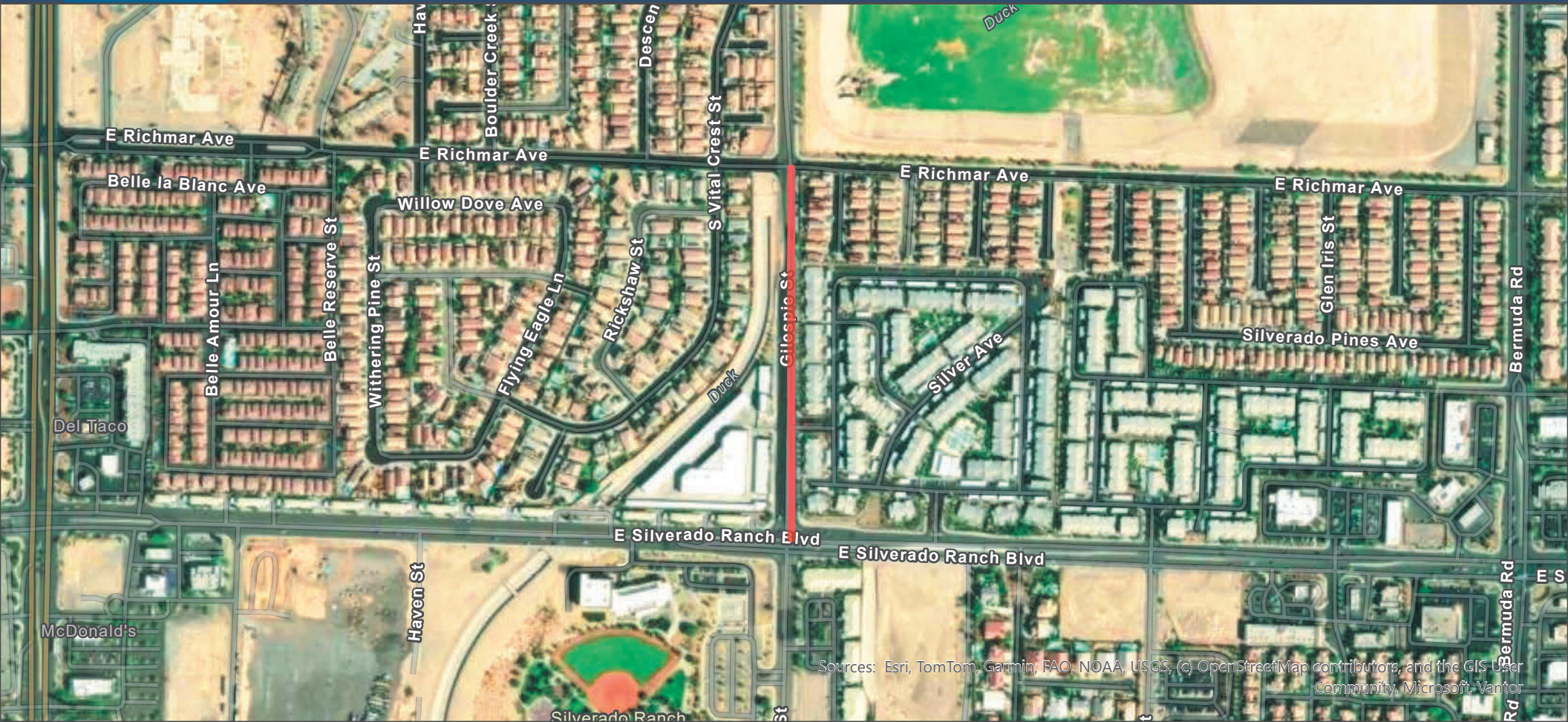


Starr Avenue - Las Vegas Blvd to Bermuda Rd & Giles pie St. - Silverado Ranch Blvd to Pebble Rd



Sources: Esri, TomTom, Garmin, FAO, NOAA, USGS, (c) OpenStreetMap contributors, and the GIS User Community, Microsoft, Vantor

Work Days & Times

All (Except LV Blvd): 7am-3:30pm, Mon-Fri
 Las Vegas Blvd: 9pm-6am, Sunday Night-Thursday Night

WEEK OF MARCH 29 - APRIL 4

— Right lane Closure - Giles pie St - Silverado Ranch Blvd to Richmar Ave

Lane Closures & Restrictions



togetherforbetter

Starr Avenue - Las Vegas Blvd to Bermuda Rd & Gilesie St. - Silverado Ranch Blvd to Pebble Rd








Sources: Esri, TomTom, Garmin, FAO, NOAA, USGS, (c) OpenStreetMap contributors, and the GIS User Community, Van'tor

Work Days & Times

All (Except LV Blvd):
7am-3:30pm, Mon-Fri
Las Vegas Blvd: 9pm-6am,
Sunday Night-Thursday Night

WEEK OF MARCH 29 - APRIL 4

-  24 hours: 1/2 road closure south side between Las Vegas Blvd. and Gilesie St.
-  Right lane Closure - Gilesie St. to Bermuda Rd. (not at the same time as left lane closure)
-  Left lane Closure - Gilesie St. to Bermuda Rd. (not at the same time as right lane closure)
-  24 hours: North half full closure from Bermuda Rd. to Haven St.
-  24 hours: SB full closure on Bermuda Rd and Starr Ave.

Lane Closures & Restrictions