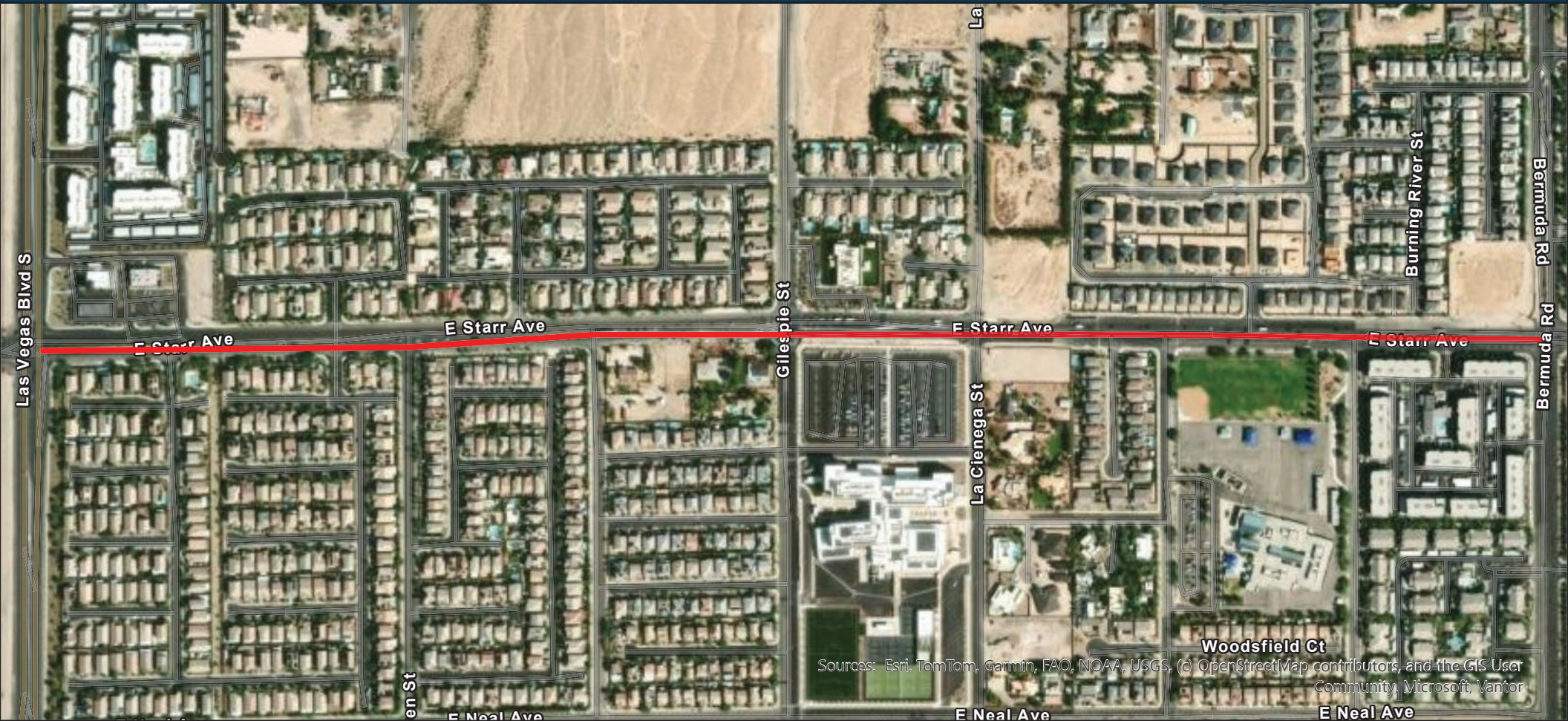




togetherforbetter

Starr Avenue - Las Vegas Blvd to Bermuda Rd & Giles pie St. - Silverado Ranch Blvd to Pebble Rd



Sources: Esri, TomTom, Garmin, FAO, NOAA, USGS, (c) OpenStreetMap contributors, and the GIS User Community, Microsoft, Vantor

Work Days & Times

All (Except LV Blvd):
7am-3:30pm, Mon-Fri
Las Vegas Blvd: 9pm-6am,
Sunday Night-Thursday Night

WEEK OF MAY 24-30

 24 hours: right lane and left lane closures between Las Vegas Blvd. to Bermuda Rd.

Lane Closures & Restrictions