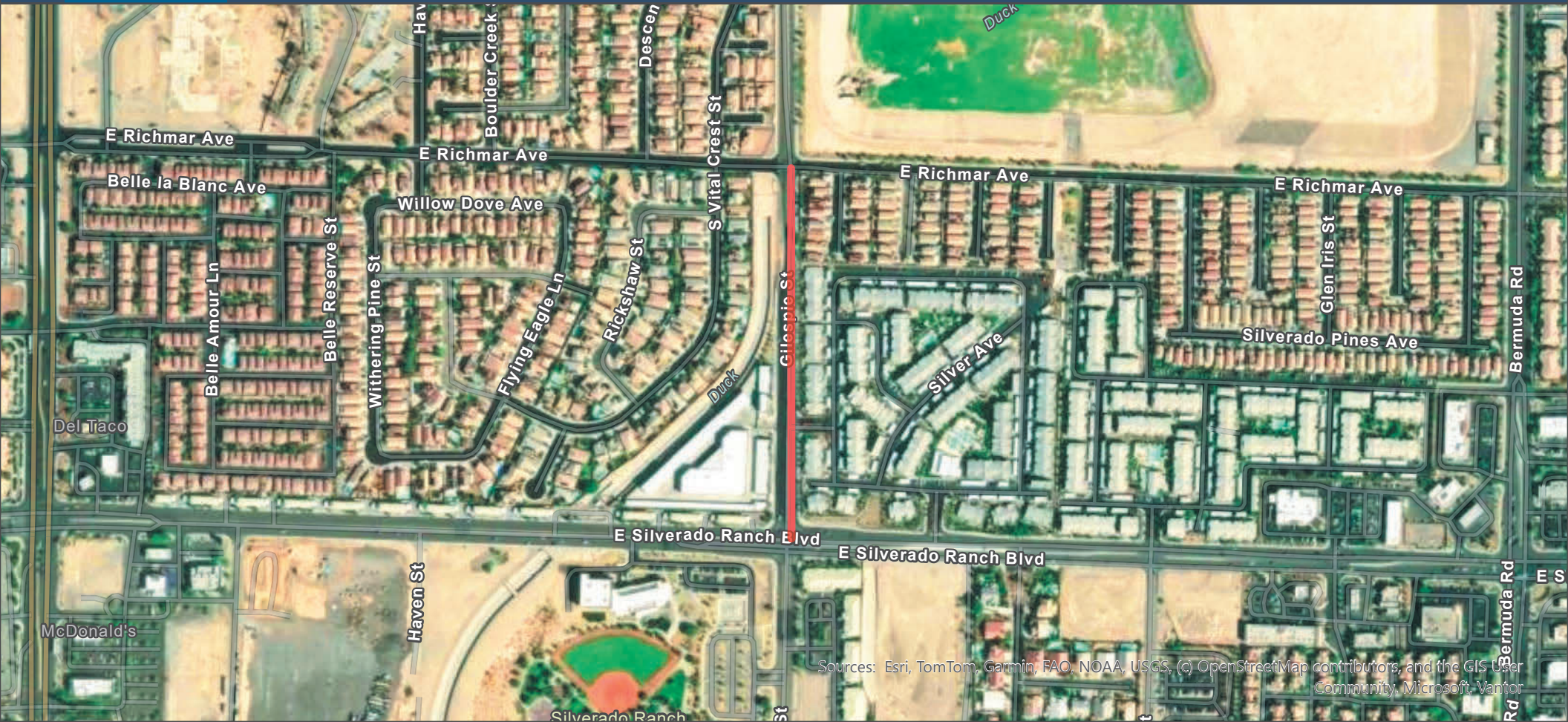


Starr Avenue - Las Vegas Blvd to Bermuda Rd & Giles pie St. - Silverado Ranch Blvd to Pebble Rd



Sources: Esri, TomTom, Garmin, FAO, NOAA, USGS, (c) OpenStreetMap contributors, and the GIS User Community, Microsoft, Vantor

Work Days & Times

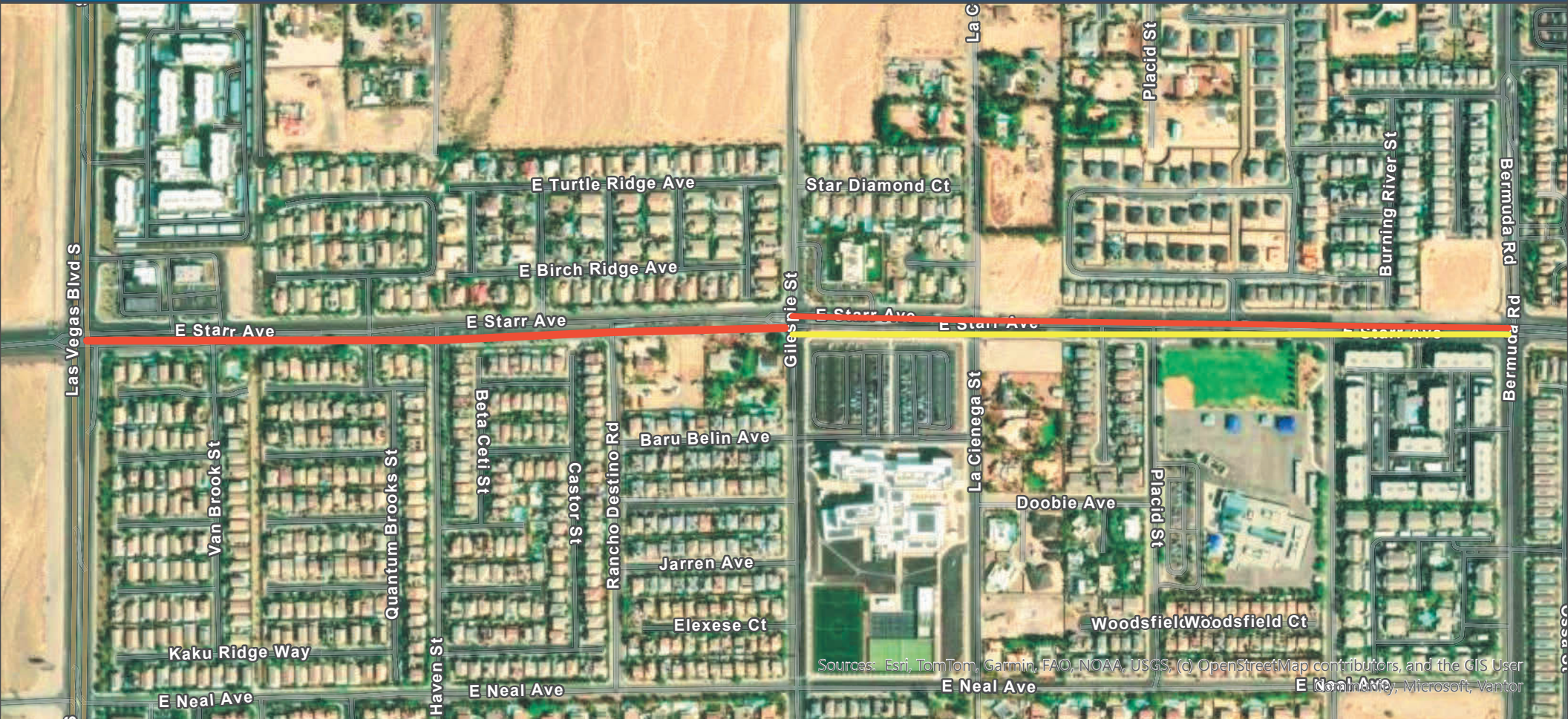
All (Except LV Blvd): 7am-3:30pm, Mon-Fri
 Las Vegas Blvd: 9pm-6am, Sunday Night-Thursday Night

WEEK OF MARCH 22-28

— Right lane Closure - Giles pie St - Silverado Ranch Blvd to Richmar Ave

Lane Closures & Restrictions

Starr Avenue - Las Vegas Blvd to Bermuda Rd & Gilespe St. - Silverado Ranch Blvd to Pebble Rd



Work Days & Times

All (Except LV Blvd): 7am-3:30pm, Mon-Fri
 Las Vegas Blvd: 9pm-6am, Sunday Night-Thursday Night

WEEK OF MARCH 22-28

- 24 hours: 1/2 road closure south side between Las Vegas Blvd. and Gilespe St.
- Right lane Closure - Gilespe St. to Bermuda Rd. (not at the same time as left lane closure)
- Left lane Closure - Gilespe St. to Bermuda Rd. (not at the same time as right lane closure)

Lane Closures & Restrictions