



Septic to Sewer Program Update

Rich Easter, Southern Nevada Water Authority
septictosewer@snwa.com

Severe and sustained drought conditions continue to impact critical storage reserves in the Colorado River Basin.

1983




2003



2023





Southern Nevada has spent **decades** preparing for drought to ensure the reliability of water supplies for Southern Nevada



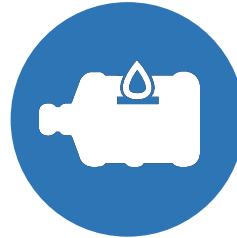
INFRASTRUCTURE

Constructing major facilities and asset management



RESOURCE PLANNING

Working with partners & developing comprehensive plans to manage supplies



WATER BANKING

Storing water supplies for the future



CONSERVATION

Incentives, programs, regulation & pricing

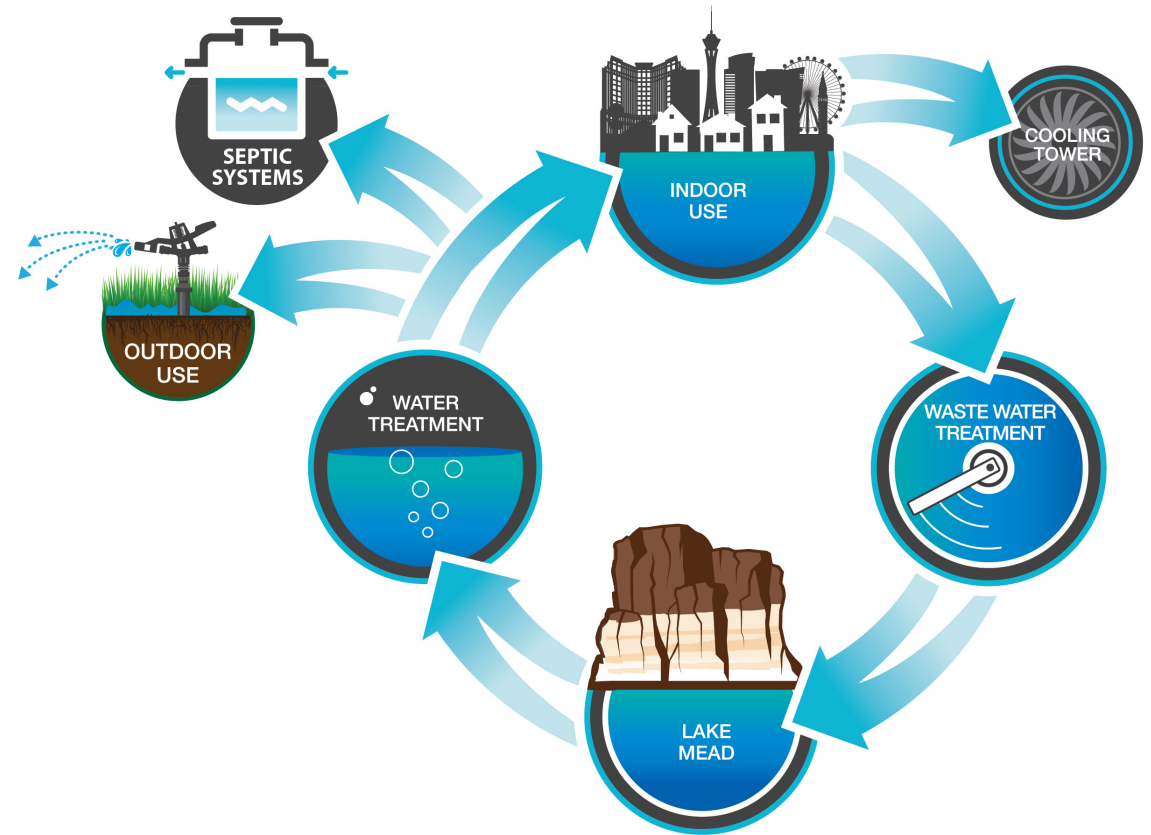
Why Septic Systems?



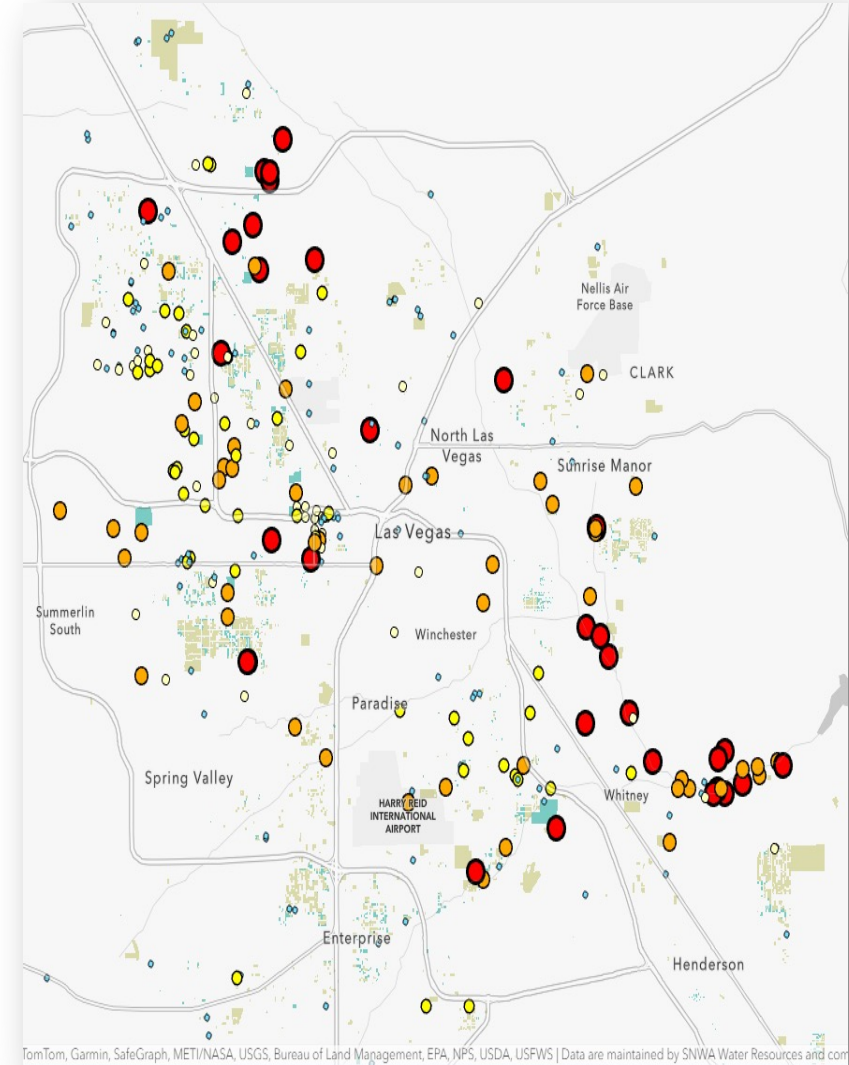
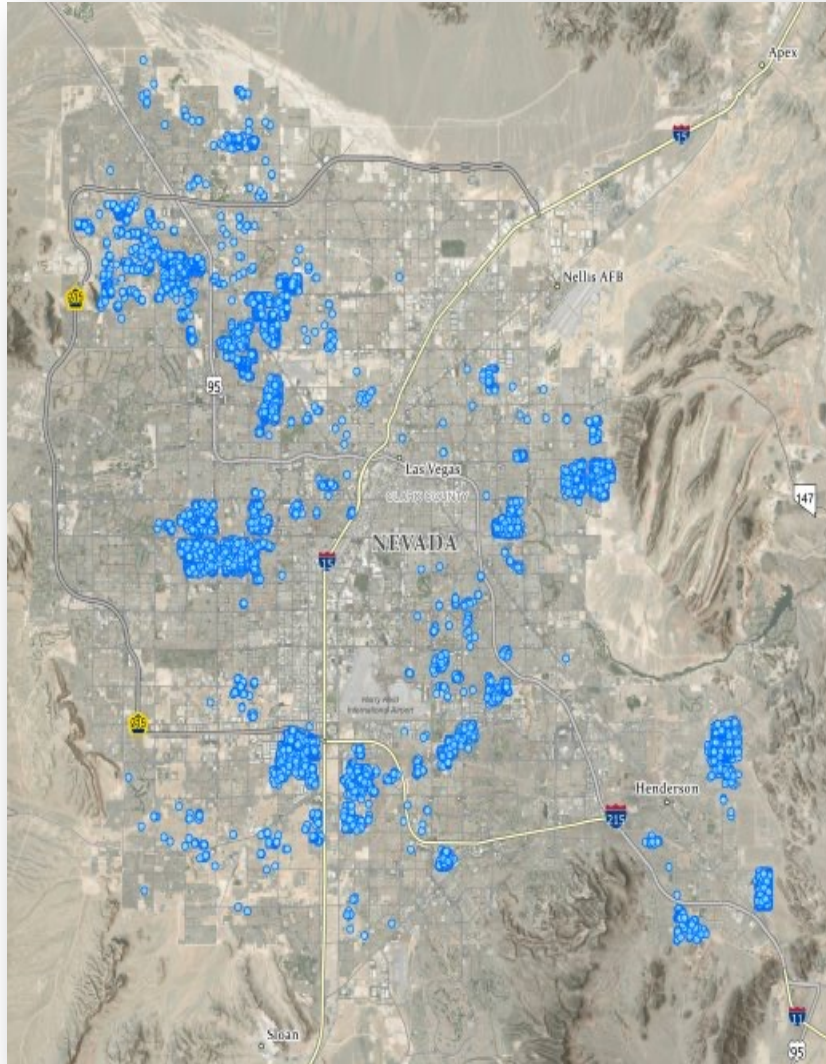
Increase reuse and return flow credits to the Las Vegas Valley.



Enhanced protection of groundwater aquifers in Southern Nevada.



Why Septic Systems?



SNWA Septic Conversion Program



SNWA Septic Conversion Program

Partially Funded Program

- Open to all existing septic owners
 - *Well abandonment not required*
- Reimbursement for 85% of project, up to \$40k
- Homeowner works directly with contractor
- Group conversions encouraged

Eligible Costs:

- Permitting/inspection fees
- Connection fees
- Design fees
- Construction costs
- Like-for-like landscape replacement
- Septic abandonment in place

Ineligible Costs:

- Landscape upgrades
- Septic tank removal

<https://www.snwa.com/rebates/septic-conversion>



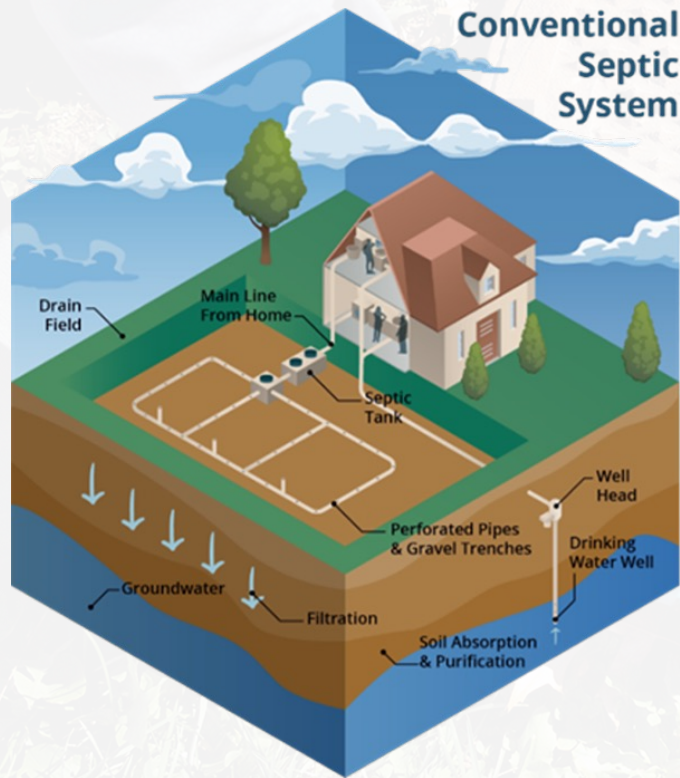
SNWA Septic Conversion Program

Partially Funded Program	Muni Water User	GMP	Total
Total # of submitted apps	242	82	324
Total # In NTP Stage (contractor bid approved)	18	9	27
Total Completed	10	4	14
Total Reimbursed	\$325,035.06	\$143,003.17	\$468,038.23
Balance	\$960,000.00	\$356,996.83	\$1,316,996.83
Average Homeowner Cost	\$11,379.48	\$8,515.87	\$9,947.68

<https://www.snwa.com/rebates/septic-conversion>



SNWA Septic Conversion Program



Fully Funded Program

- ~\$13M in federal grant dollars
 - BOR/EPA/ARPA
- Selected by SNWA/Sewer Agencies
 - Early focus on lateral-only
- Residential parcels with septic and municipal water
- SNWA-hired contractor
- Begins early 2025

<https://www.snwa.com/rebates/septic-conversion>



Key Takeaways



Septic conversions protect and extend Southern Nevada's water supply



Financial assistance is available for voluntary conversions today



No quick fix – in it for the long haul



A wide-angle landscape photograph showing a calm lake with several small, rocky islands. The foreground is a dry, rocky hillside with sparse vegetation. In the background, a range of mountains stretches across the horizon under a clear sky. The text "Q+A" is centered in the middle of the image, with a horizontal line below it.

Q+A
