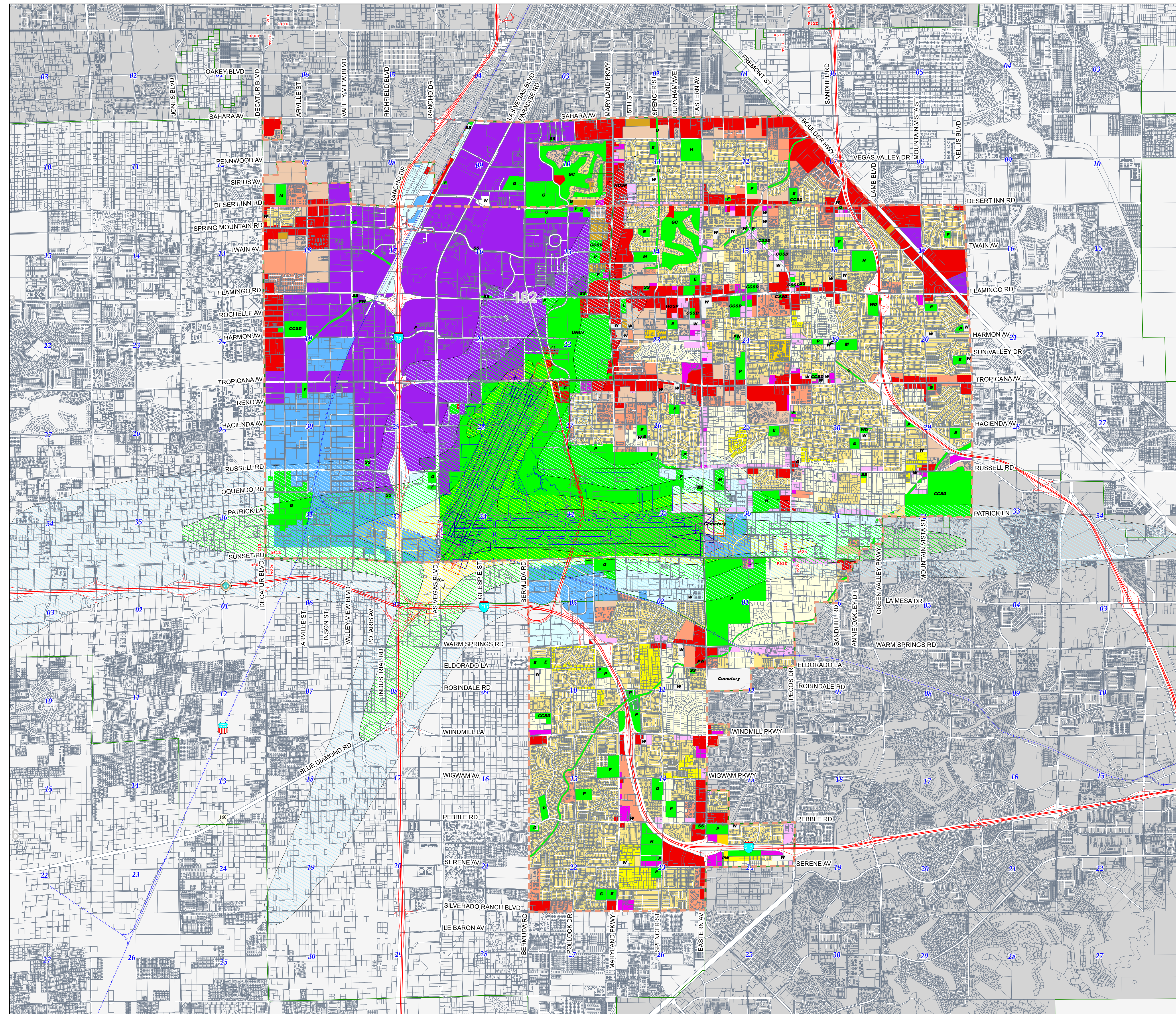


Comprehensive Planning Planned Land Use Winchester/Paradise Planning Area

Adopted on: November 8, 2017

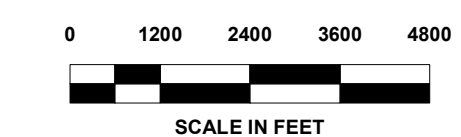
Effective on: December 19, 2017



- | | |
|--|---|
| Open Lands | Residential High Rise Center
Greater than 32 du/ac |
| Agricultural | Office Professional |
| Residential Rural
Up to 0.5 du/ac | Commercial Neighborhood |
| Residential Agricultural
Up to 1 du/ac | Commercial General |
| Rural Neighborhood
Up to 2 du/ac | Commercial Tourist |
| Rural Neighborhood Preservation
Up to 2 du/ac | Business and Design
Research Park |
| Residential Low
Up to 3.5 du/ac | Industrial |
| Residential Suburban
Up to 8 du/ac | Heavy Industrial |
| Residential Medium
From 3 to 14 du/ac | Public Facilities |
| Residential High
From 8 to 18 du/ac | Institutional |
| Residential Urban Center
From 18 to 32 du/ac | Major Development Projects |

- | | |
|-----------------------------------|--------------------------------|
| Airport Arrival RPZ | Noise Environ AE-60 |
| Airport Arrival and Departure RPZ | Noise Environ AE-65 |
| Airport Departure RPZ | Noise Environ AE-70 |
| | Noise Environ AE-75 |
| | McCarran International Airport |

- | | |
|--|---|
| S = School | P = Park |
| H = High | F = Fire Station |
| M = Middle | PD = Police Station |
| E = Elementary | PW = Public Works |
| L = Library | SS = Electrical Sub-Station |
| CCSD = School District Property | W = Place of Worship |
| RTC = Regional Transportation Commission | WD = Water District |
| | CCWRD = Clark County Water Reclamation District |



Map Created On: January 25, 2018

This information is for display purposes only.
No liability is assumed as to the accuracy of the data delineated herein.
Categories denoted in the legend may not apply to a particular Planning Area.

