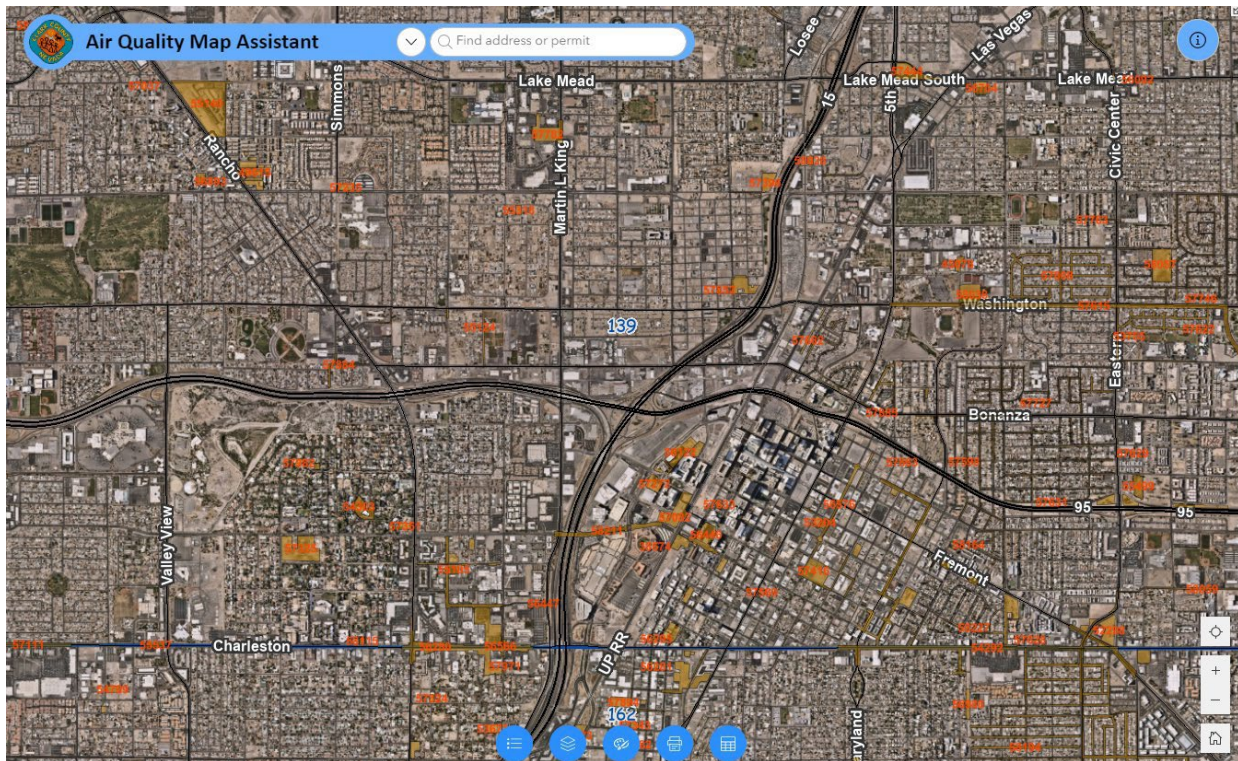


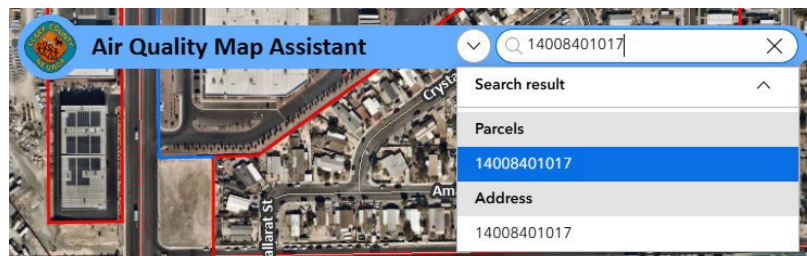
Welcome to the Air Quality Map Assistant

- The dust permit layer shows all the areas covered under active Dust Control Operating Permits (DCOPs).
- The layer is marked in brown as shown below.
- The dust permit layer is updated approximately every two weeks.
- Prior to submitting a DCOP application, please review the area on this program to verify that it is not already permitted. Air Quality does not allow multiple permittees to pull DCOPs for the same area.

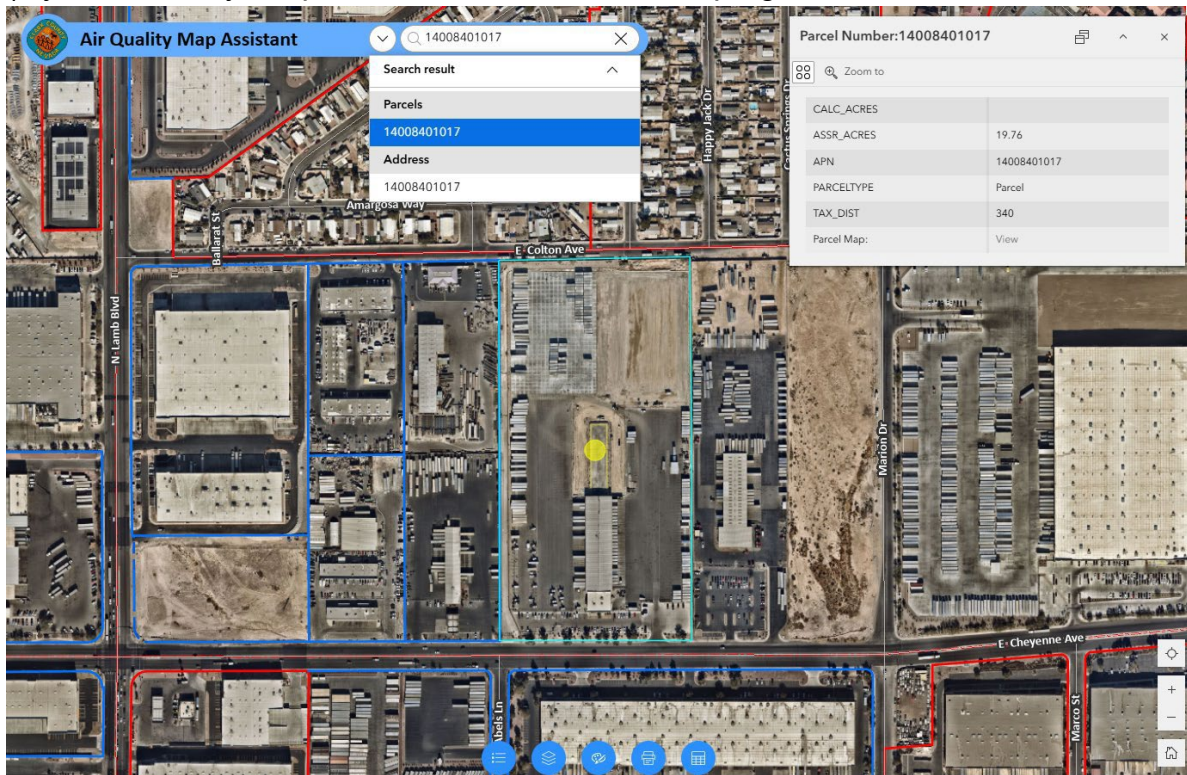


Using the Search Feature

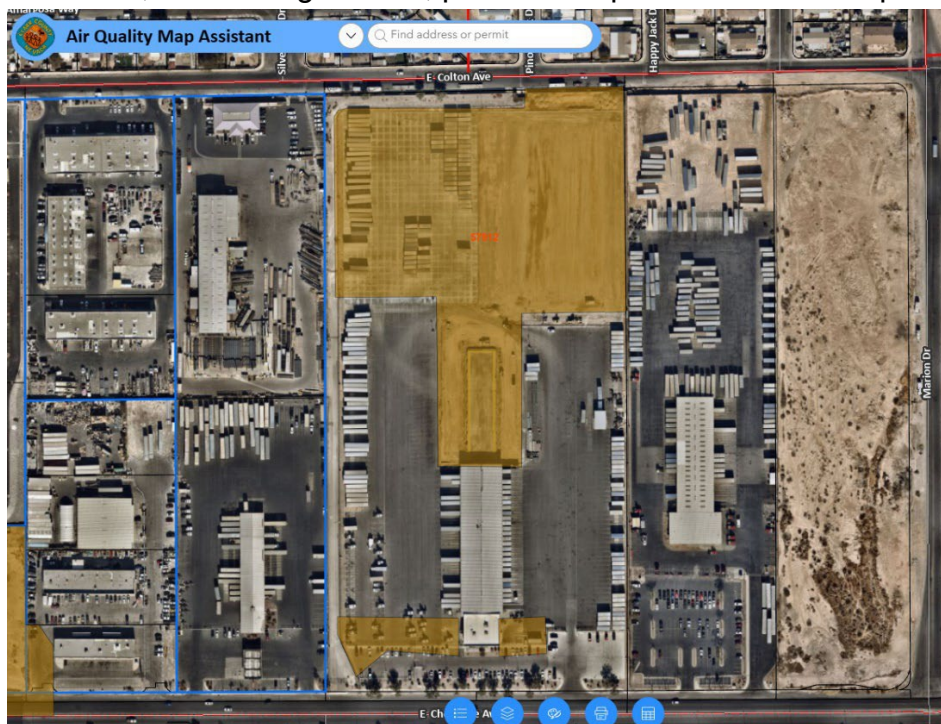
- Begin by entering a parcel number, DCOP number, address, or cross streets in the search box.
NOTE: Do not include dashes when entering the parcel number.
- Press Enter.



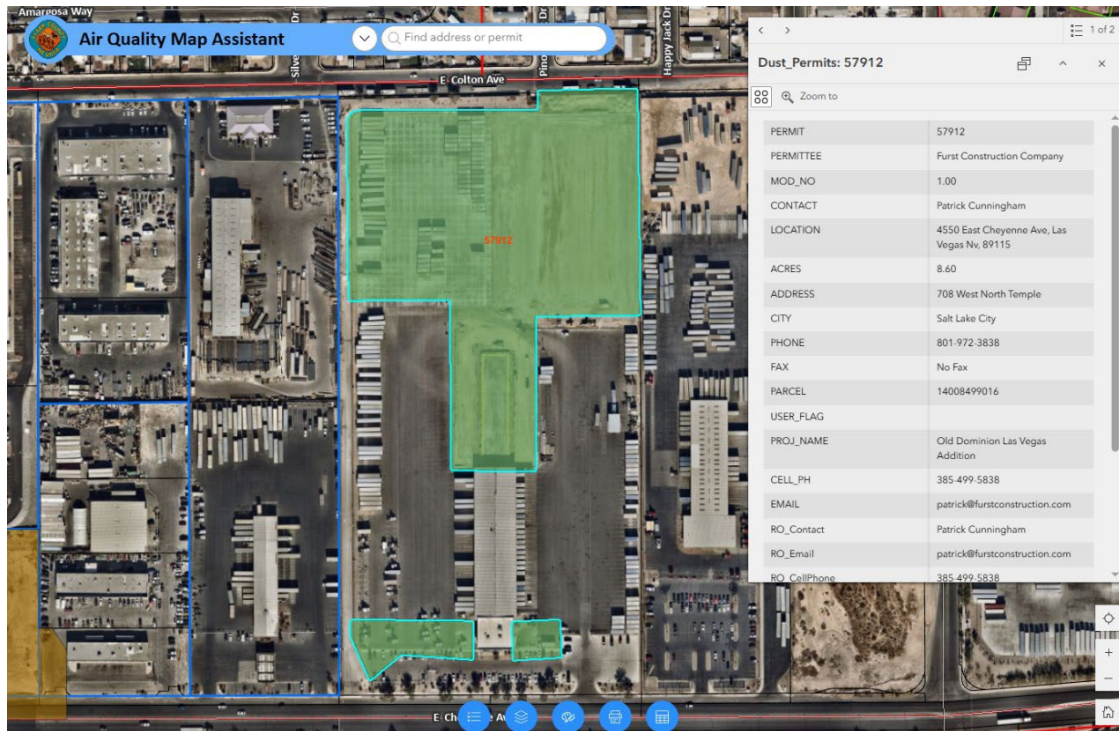
- The program takes you to the parcel number, DCOP, address, or cross streets.
(If you search by the parcel number or DCOP, the program outlines the area in blue.)



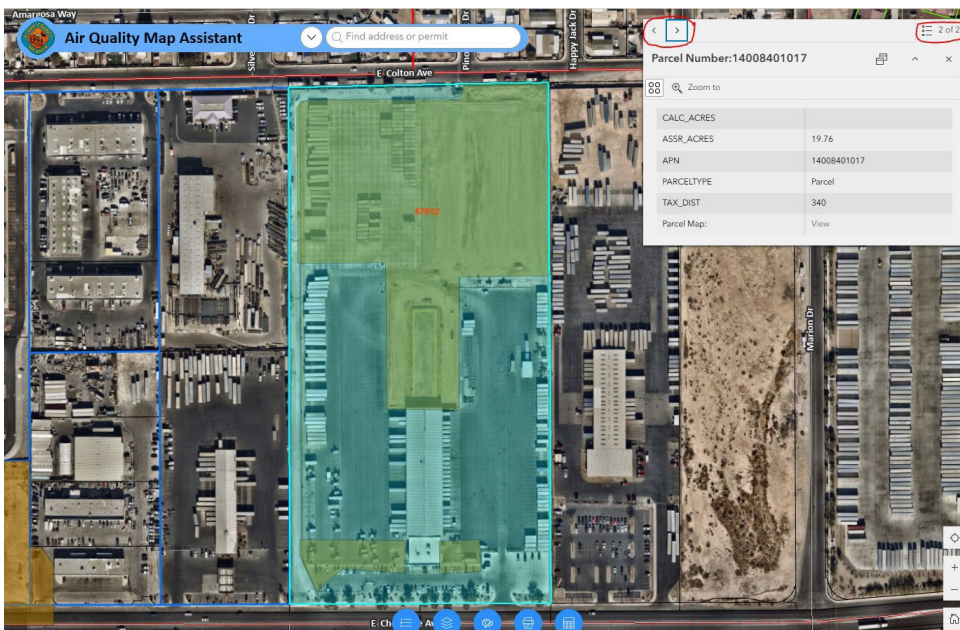
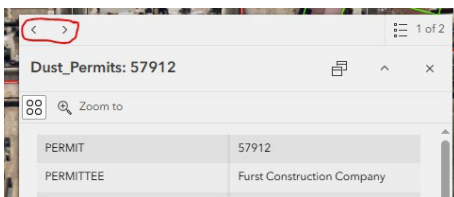
- Clear the search by clicking on the X in the search bar.
- As you can see, in the image below, parts of the parcel have a dust permit area.



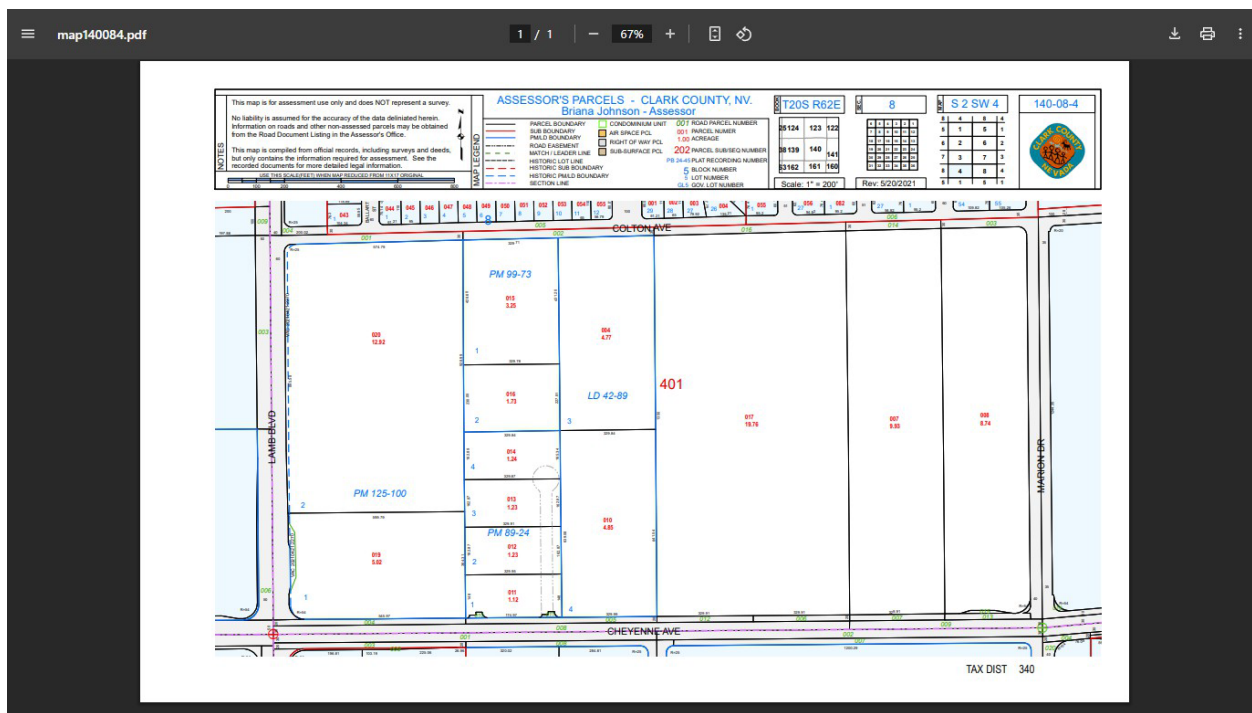
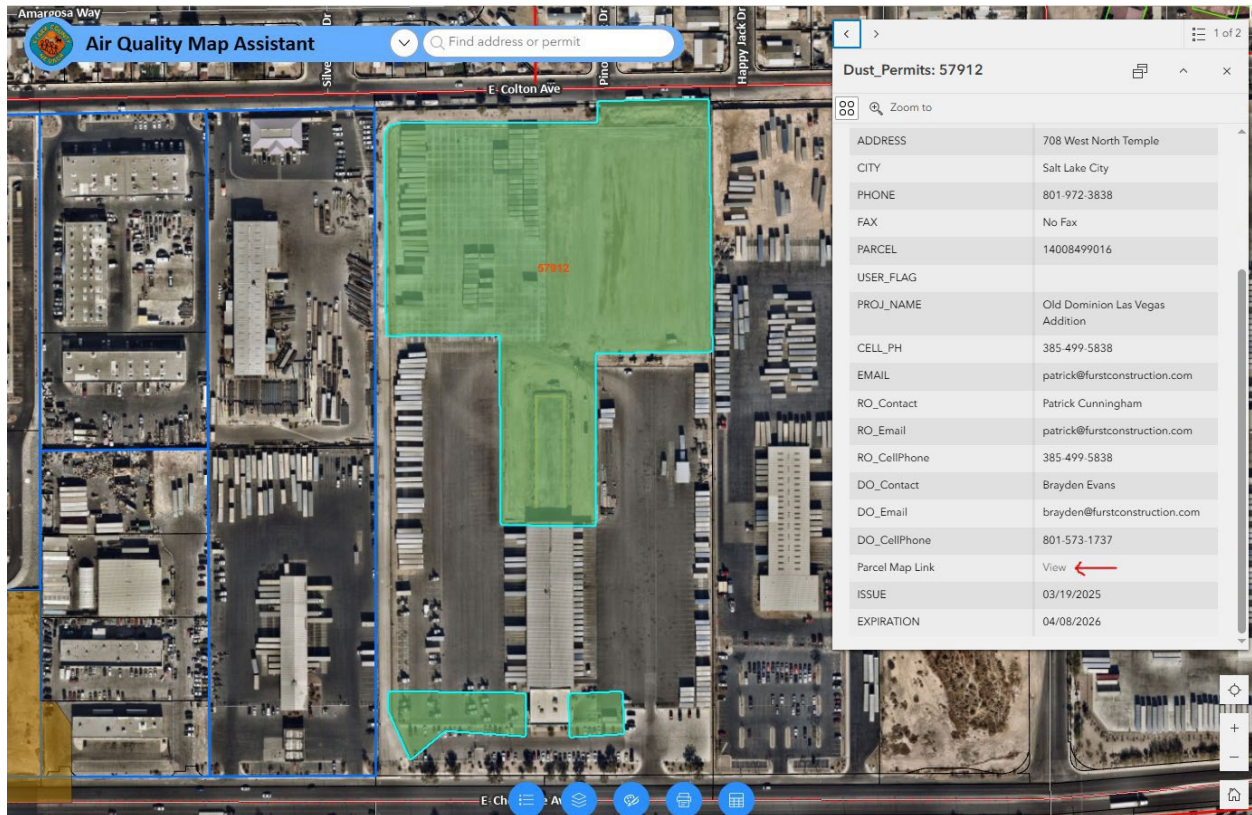
- Use your mouse to click on the area. A pop-up will appear with Dust Permit information, and the Dust Permit areas will be highlighted.



- Use the pop-up arrows to navigate between pop-up information for Dust Permits and Parcel.



- A link to the assessor's parcel map is included at the bottom of the information box.
- Click on **View** to pull up the assessor's parcel map.

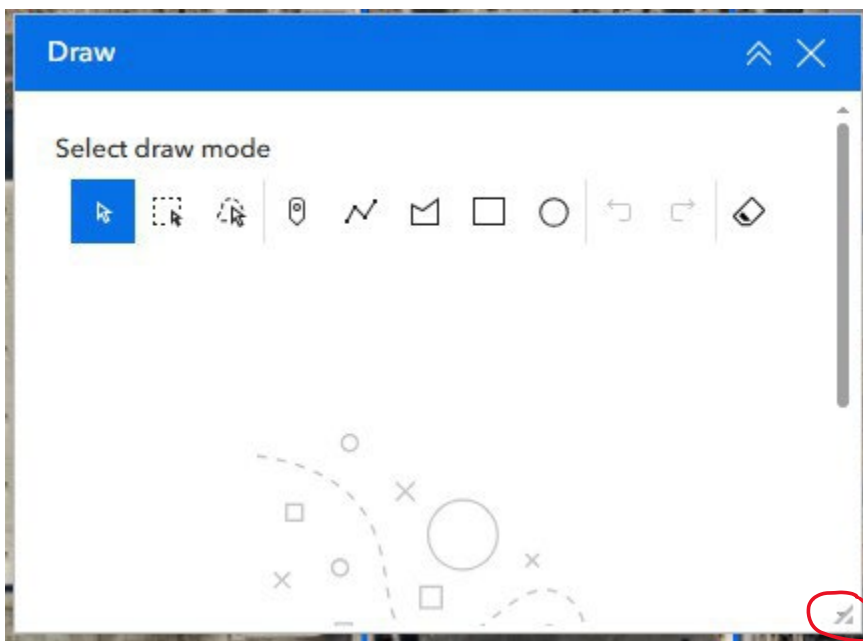


Using the Drawing Tools

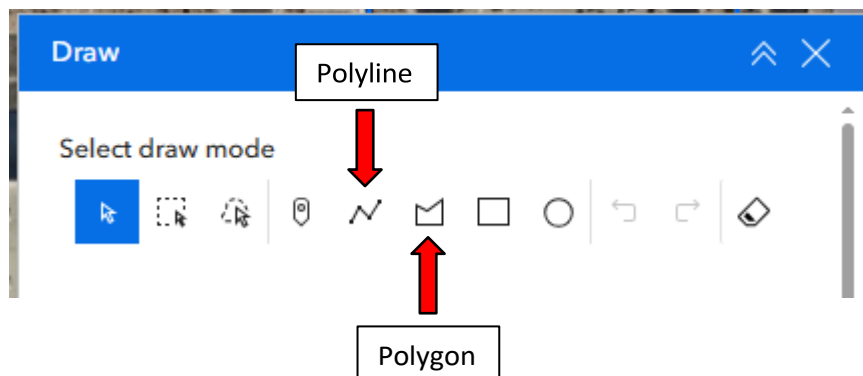
- Click on the Draw icon at the bottom of the page.



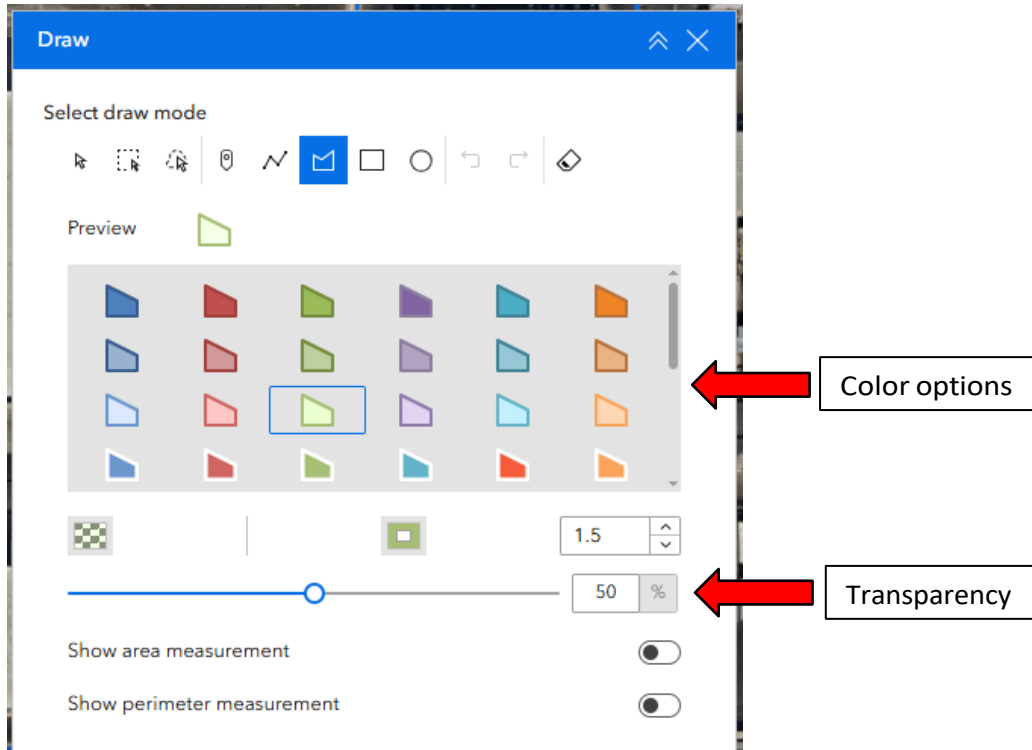
- The Draw options box appears. To expand the Draw options box, drag the bottom left corner.



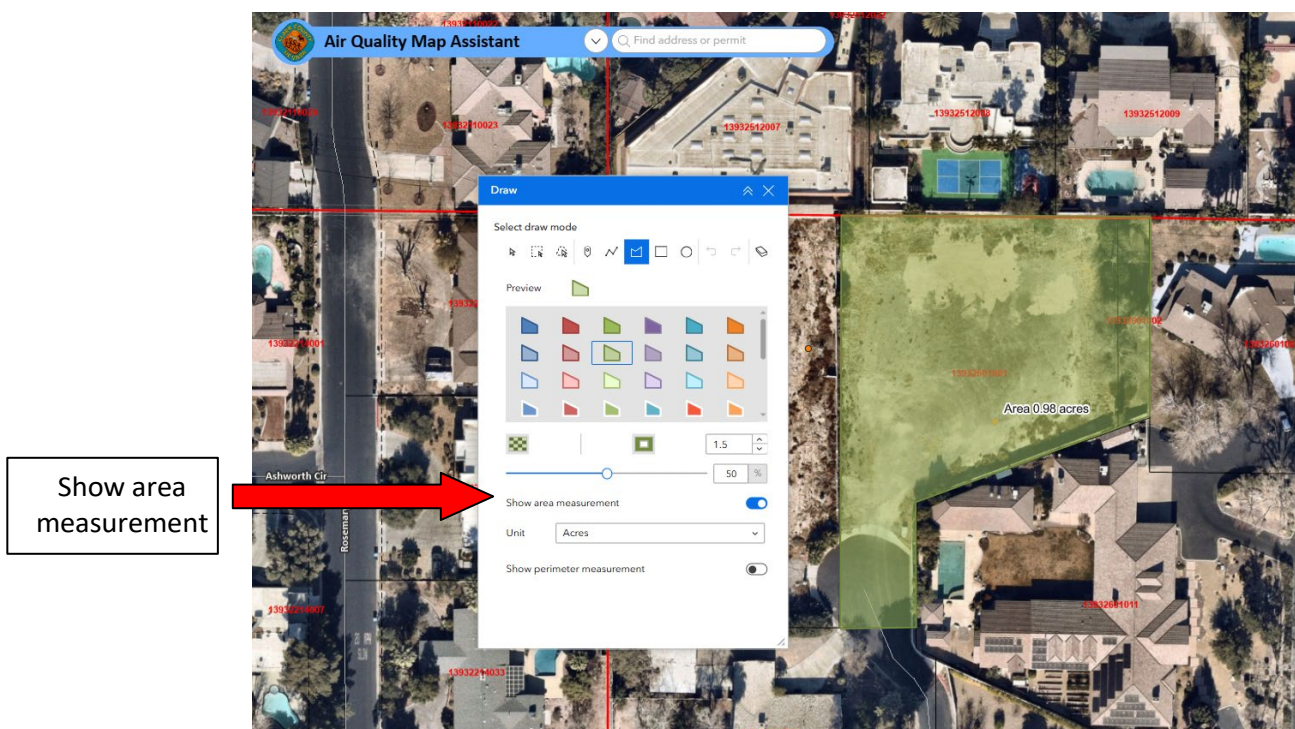
- Select the draw mode. For DCOPs, the most common draw mode is polygon or polyline.



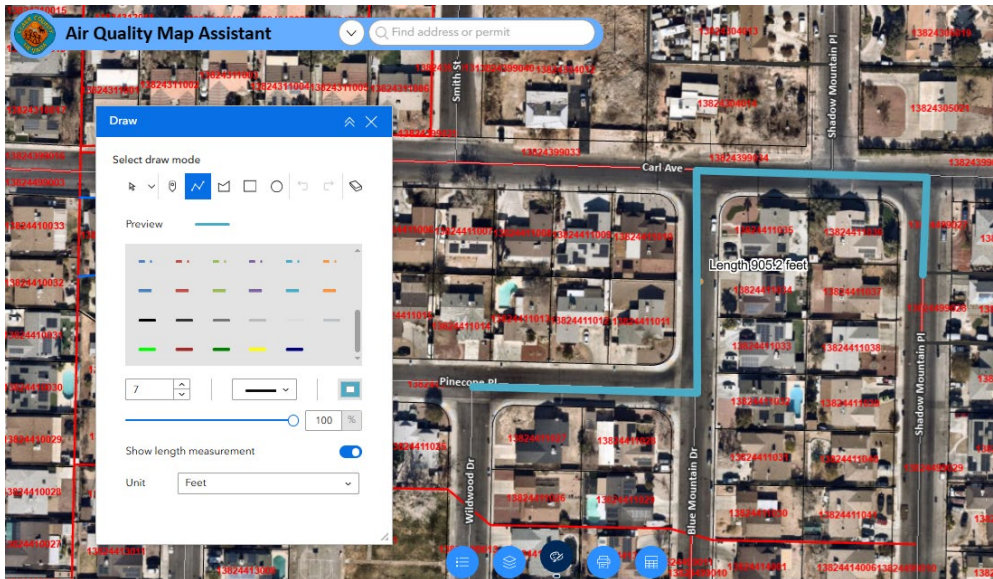
- Select a color and adjust the transparency to 50%.



- Enable the option to show the measurement on the drawing.
 - If drawing a polygon, select “Show area measurement.”
 - Change unit to acres.
 - “Show perimeter measurement” does not need to be enabled.



- If drawing a polyline, select “Show length measurement.”
 - Change unit to feet.

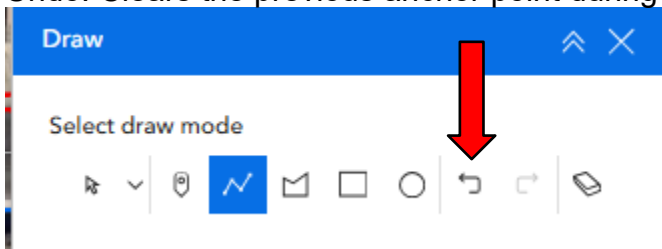


- Left click on the screen to begin drawing.
- Continue clicking until the entire area being permitted is drawn.
- Double click to complete the drawing and return a measurement.

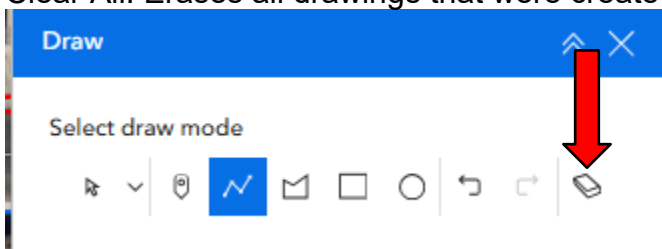
Useful Editing Tools

In the draw option box, there will be three useful editing tools.

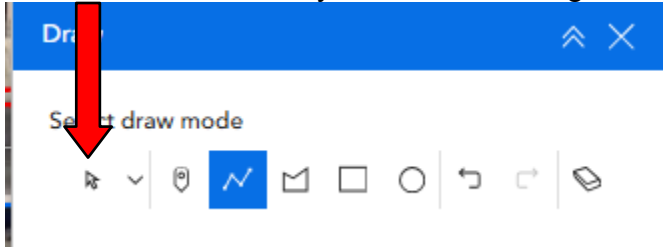
- Undo: Clears the previous anchor point during the drawing process.



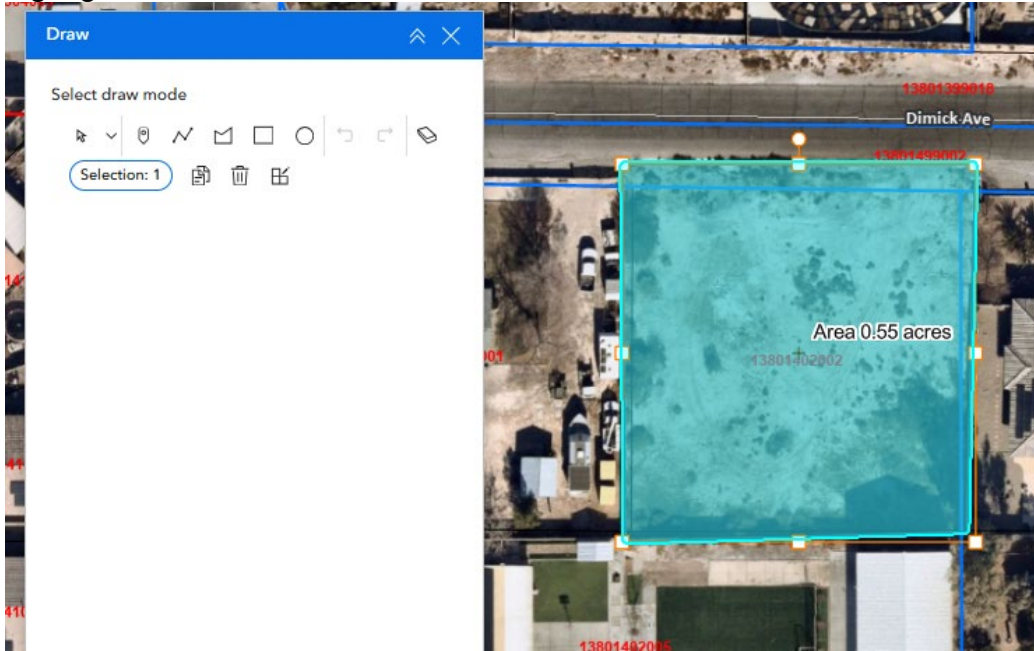
- Clear All: Erases all drawings that were created.



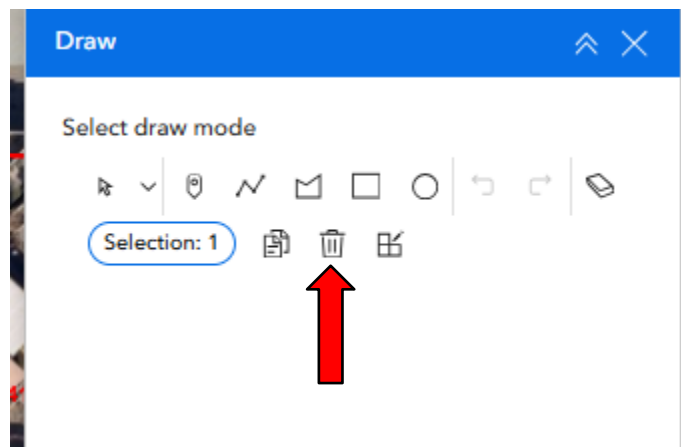
- Select Feature: Allow you to edit drawing.



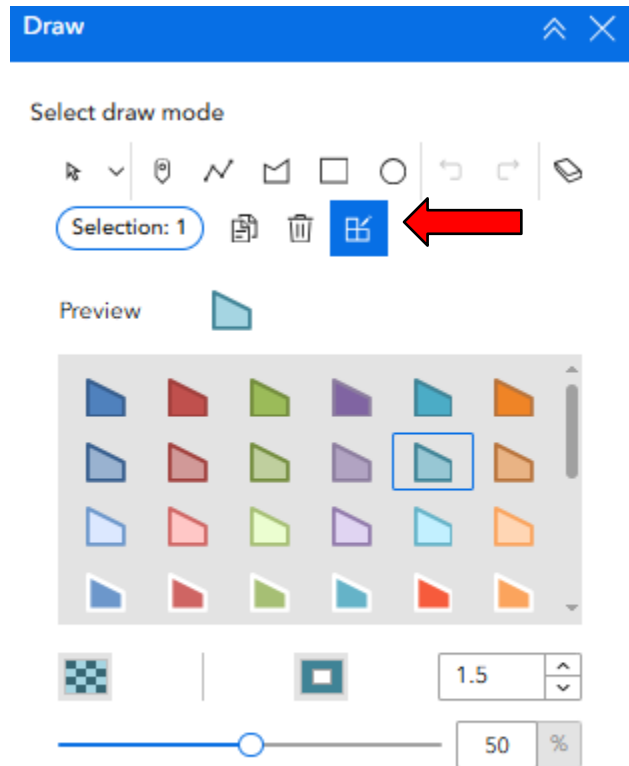
- Click once to select the drawing that needs to be edited. The drawing will highlight in blue when selected.



- While selected, two options will be available:
 - Delete Feature: Will clear selected drawing.



- Edit Feature: Changes color, transparency, and border of the selected drawing.



- While a drawing is selected, click the drawing to edit the shape.
 - Move the yellow dots to adjust the anchor points location.



- Move the white dots to create new anchor points.

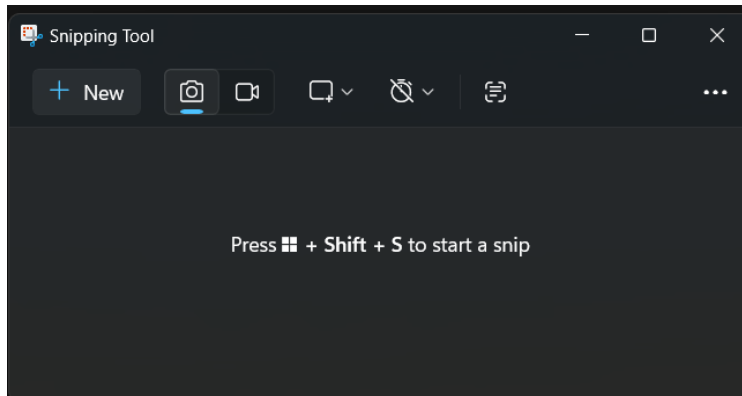


Printing

To print the screenshot, use the snipping tool available on your computer or use the print function included with the program.

Snipping Tool

1. Open the snipping tool available on your computer.



2. Select new and drag your cursor over the screen to capture the image.

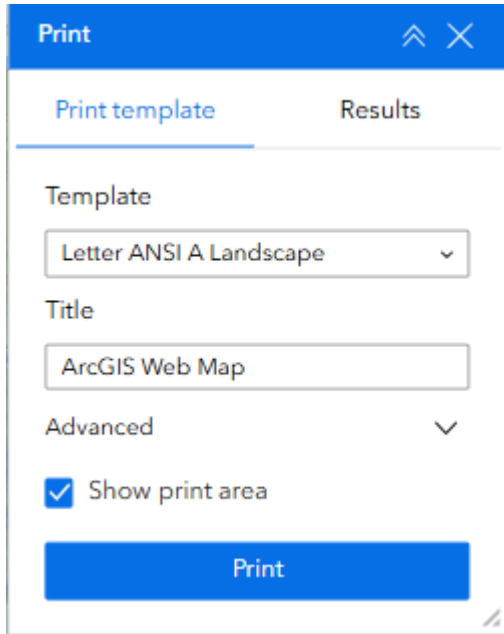
Ensure to include cross-streets and area measurements.

Print Tool

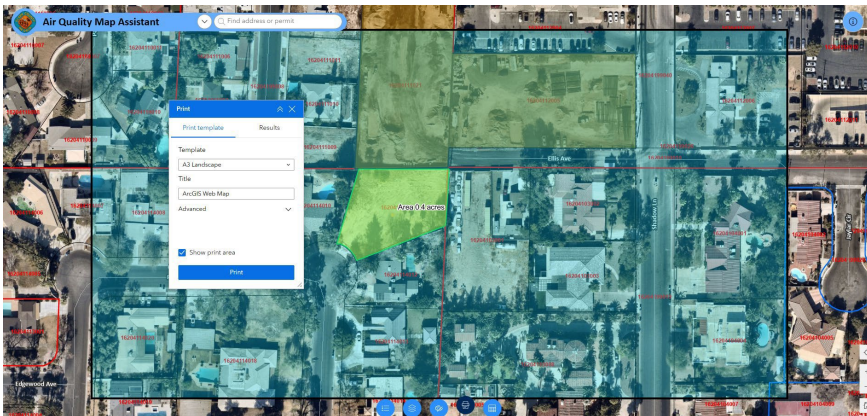
1. Click on the Print icon at the bottom of the webpage.



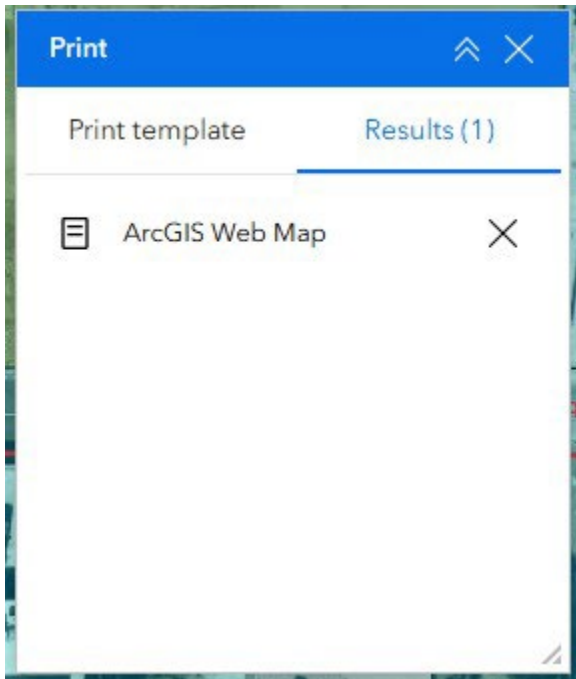
2. The following Print options box appears.



3. Choose a template. Letter ANSI A Landscape is recommended. A PDF preview link will display under the Results tab after the Print button is clicked.
4. Type your customized title in the Title box.
5. If “Show print area” is enabled, the print area will be highlighted in cyan.



6. Click Print.
- Note: Print takes a few seconds to generate.
7. Click on the "Results" tab to view the map.



8. Finally, click on your titled map, from the Results tab.

Example Print

